

Ground Floor Level

Entrance/Reception Lobby

Gross Floor Area - 464 m²

Lobby Internal Area - 231 m²



- 1. Drop-off
- 2. Reception
- 3. Concierge
- 4. Lift Lobby
- 5. Meeting Room - 15m²
- 6. Mail Room - 6m²
- 7. Loading Area - 24m²
- 8. Garbage Room - 25m²
- 9. Gate House - 9m²

- 10. Fire command centre & BMS room - 19m²
- 11. RMU Room - 14m²
- 12. Site Entrance
- 13. Ramp Access to the Car Park
- 14. Access Stair to the Beach

Apartment Layouts

Level 01 - 4 Bedroom Unit

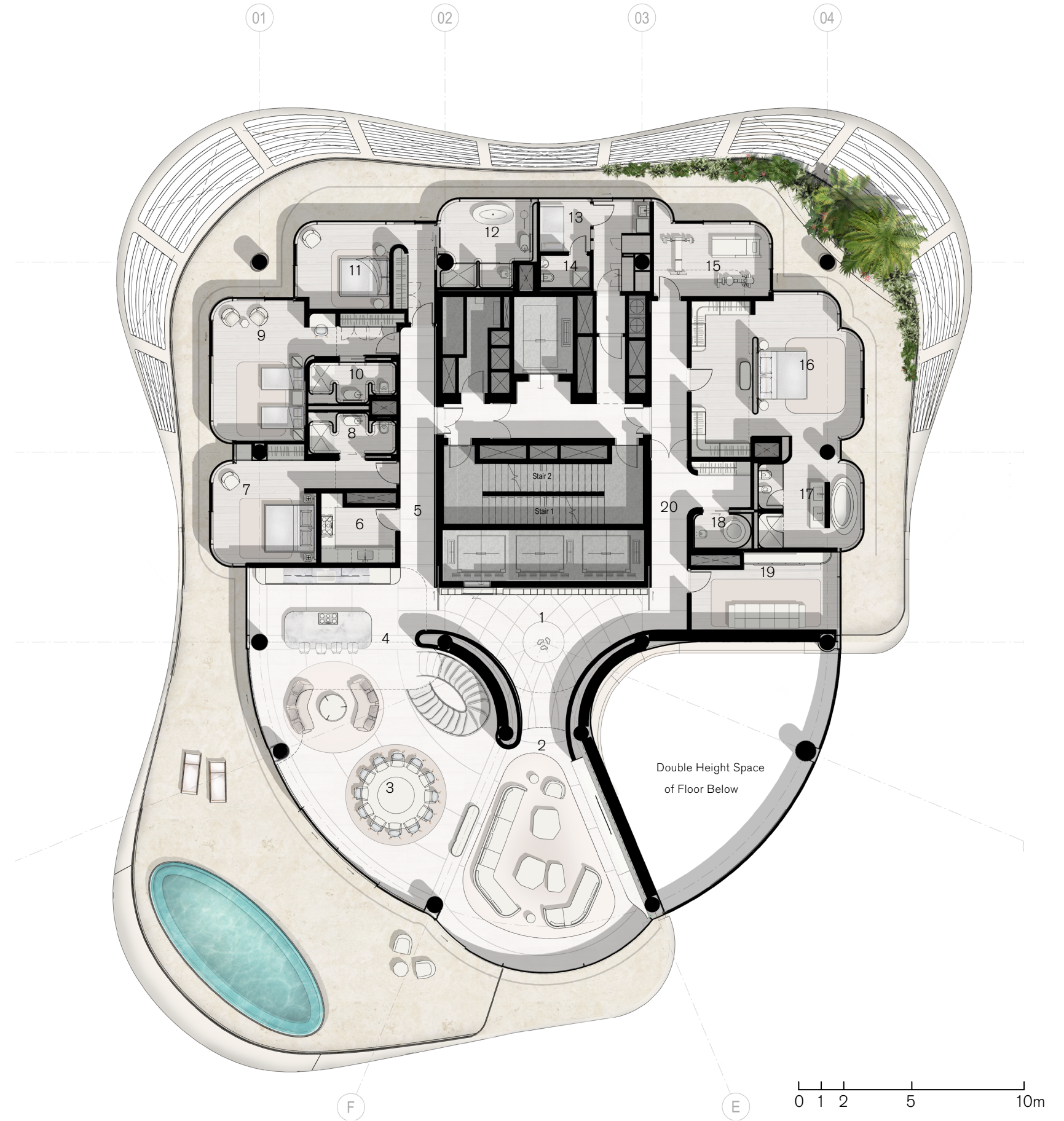
Total of 1 Units (1st Floor)

Internal Area - 614 m²

Terrace Area - 315 m²

- External Area - 256 m²
- Mezzanine Balcony - 12 m²
- Swimming Pool - 32 m²
- Garden - 15m²

Internal + Terrace Area - 929m²



- | | |
|--|--|
| 1 Foyer - 30 m ² | 11. Guest Bedroom - 24m ² |
| 2. Living - 71 m ² | 12. Guest Bathroom - 15m ² |
| 3. Dining - 67 m ² | 13. Maid's Bedroom - 6 m ² |
| 4. Display Kitchen - 49 m ² | 14. Maid's Bathroom - 4 m ² |
| 5. Hallway - 28m ² | 15. Gym - 18 m ² |
| 6. Prep Kitchen - 10m ² | 16. Master Bedroom - 48 m ² |
| 7. Guest Bedroom - 29 m ² | 17. Master Bathroom - 20 m ² |
| 8. Guest Bathroom - 8m ² | 18. Powder Room - 4 m ² |
| 9. Guest Bedroom - 34 m ² | 19. Cinema / Convertible Family Room - 19 m ² |
| 10. Guest Bathroom - 7 m ² | 20. Hallway - 18 m ² |

Note: The areas shown are indicative and should only be used as a reference to calculate the leasable area

Apartment Layout

Level 2 - 4 Bedroom Unit

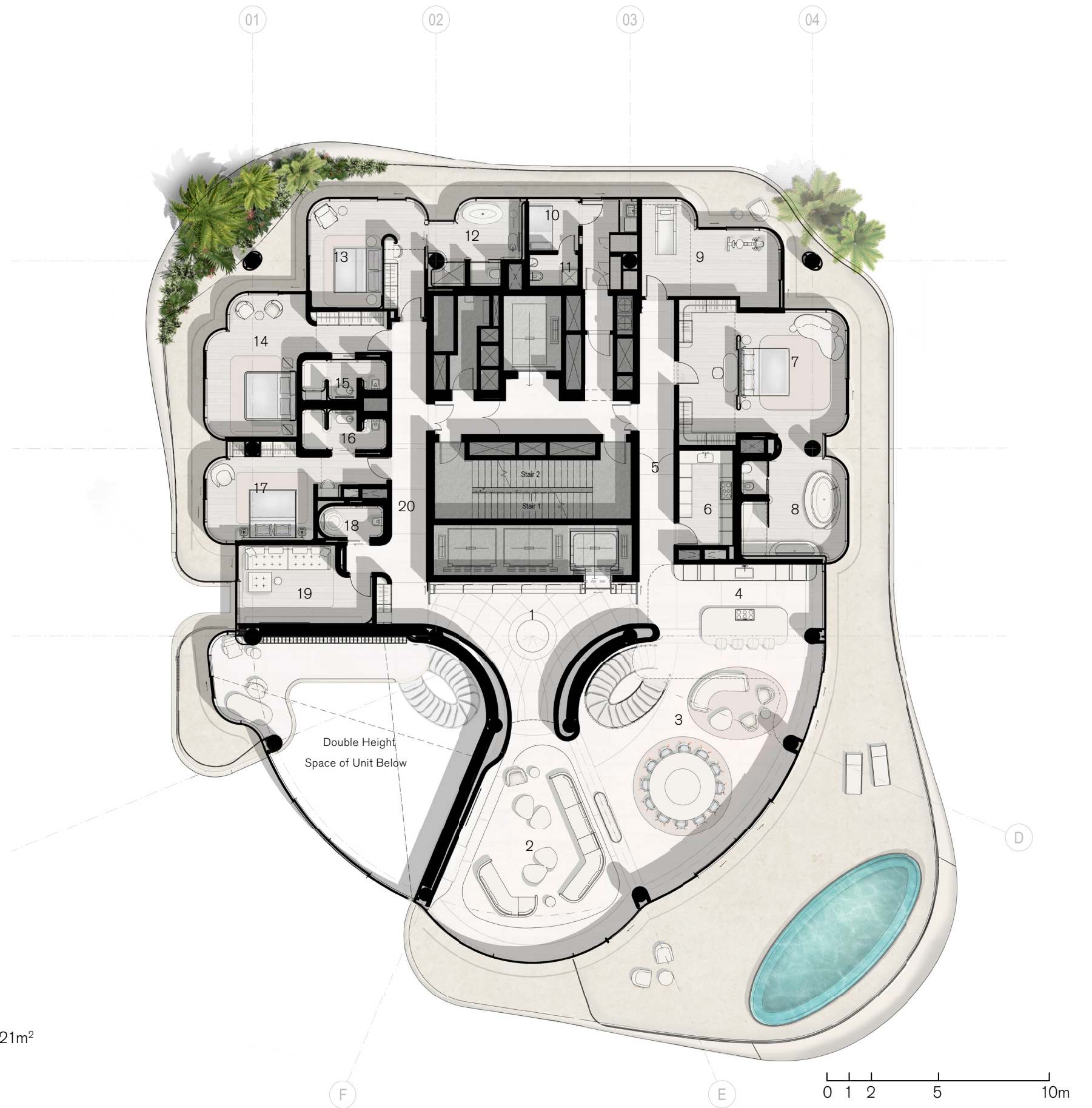
Total of 1 Units (2nd Floor)

Internal Area - 619 m²

Terrace Area - 305m²

- External Area - 246m²
- Mezzanine Balcony - 12m²
- Swimming Pool - 32m²
- Garden - 15m²

Internal + Terrace Area - 924 m²



- | | |
|---------------------------------------|---|
| 1. Foyer - 55m ² | 11. Maid's Bathroom - 4m ² |
| 2. Living - 67m ² | 12. Guest Bathroom - 14m ² |
| 3. Dining - 71m ² | 13. Guest Bedroom - 26m ² |
| 4. Display Kitchen - 49m ² | 14. Guest Bedroom - 33m ² |
| 5. Hallway - 19m ² | 15. Guest Bathroom - 7m ² |
| 6. Prep Kitchen - 12m ² | 16. Guest Bathroom - 8m ² |
| 7. Master Bedroom - 32m ² | 17. Guest Bedroom - 23m ² |
| 8. Master Bathroom - 23m ² | 18. Powder Room - 5m ² |
| 9. Gym - 23m ² | 19. Cinema / Convertible Family Room - 21m ² |
| 10. Maid's Bedroom - 6m ² | 20. Hallway - 28m ² |

Note: The areas shown are indicative and should only be used as a reference to calculate the leasable area

Apartment Layout

Marina Facing - 4 Bedroom Unit

Total of 3 units (Levels 4, 6, 8)

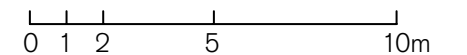
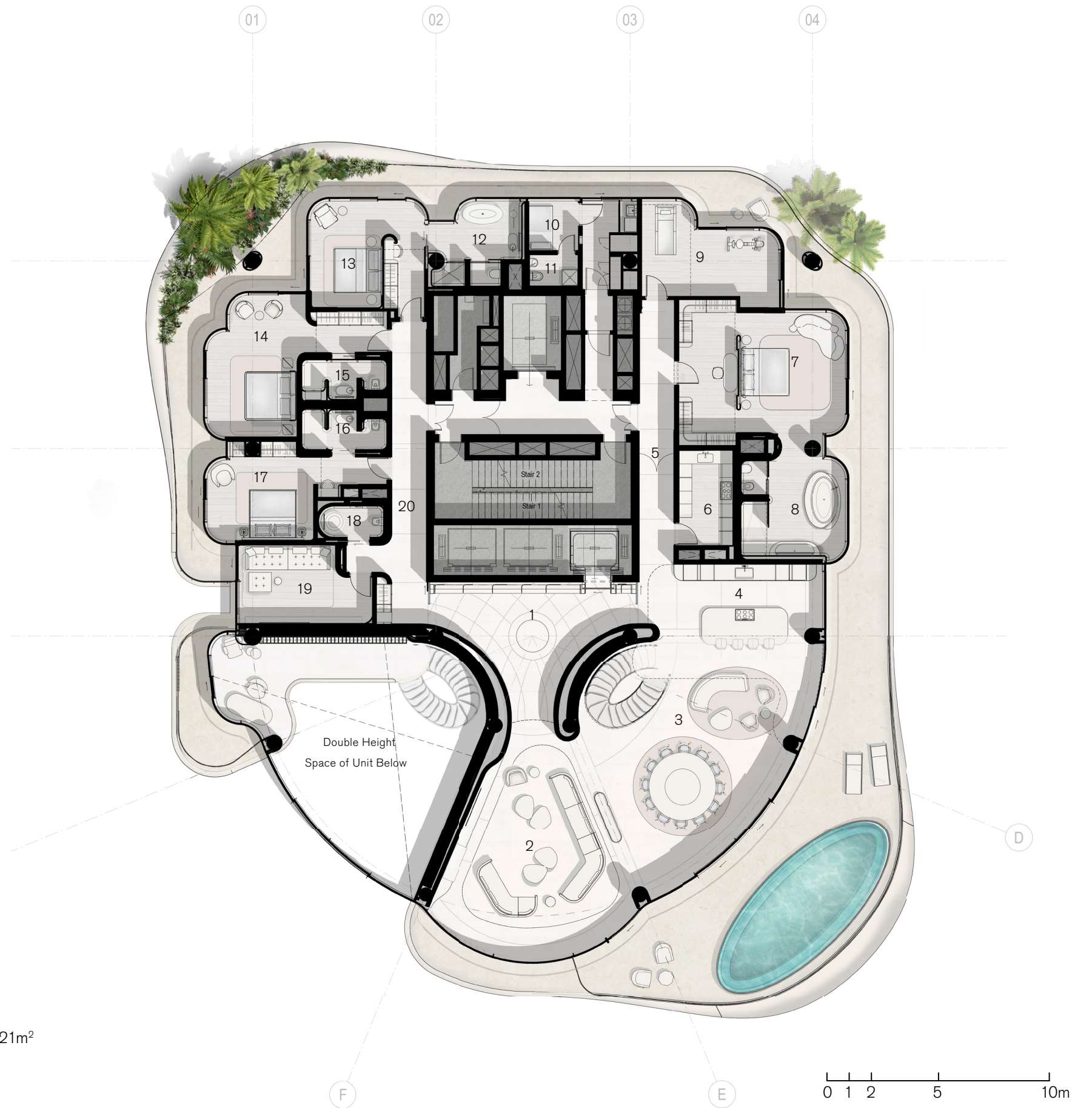
Internal Area - 619 m²

Terrace Area - 247m²

- External Area - 187m²
- Mezzanine Balcony - 12m²
- Swimming Pool - 32m²
- Garden - 16m²

Internal + Terrace Area - 866m²

- | | |
|---------------------------------------|---|
| 1. Foyer - 55m ² | 11. Maid's Bathroom - 4m ² |
| 2. Living - 67m ² | 12. Guest Bathroom - 14m ² |
| 3. Dining - 71m ² | 13. Guest Bedroom - 26m ² |
| 4. Display Kitchen - 49m ² | 14. Guest Bedroom - 33m ² |
| 5. Hallway - 19m ² | 15. Guest Bathroom - 7m ² |
| 6. Prep Kitchen - 12m ² | 16. Guest Bathroom - 8m ² |
| 7. Master Bedroom - 32m ² | 17. Guest Bedroom - 23m ² |
| 8. Master Bathroom - 25m ² | 18. Powder Room - 5m ² |
| 9. Gym - 23m ² | 19. Cinema / Convertible Family Room - 21m ² |
| 10. Maid's Bedroom - 6m ² | 20. Hallway - 28m ² |



Note: The areas shown are indicative and should only be used as a reference to calculate the leasable area

Apartment Layouts

Palm-Facing 4 Bedroom Unit

Total of 4 units (Levels 3, 5, 7 and 9)

Internal Area - 614m²

Terrace Area - 248m²

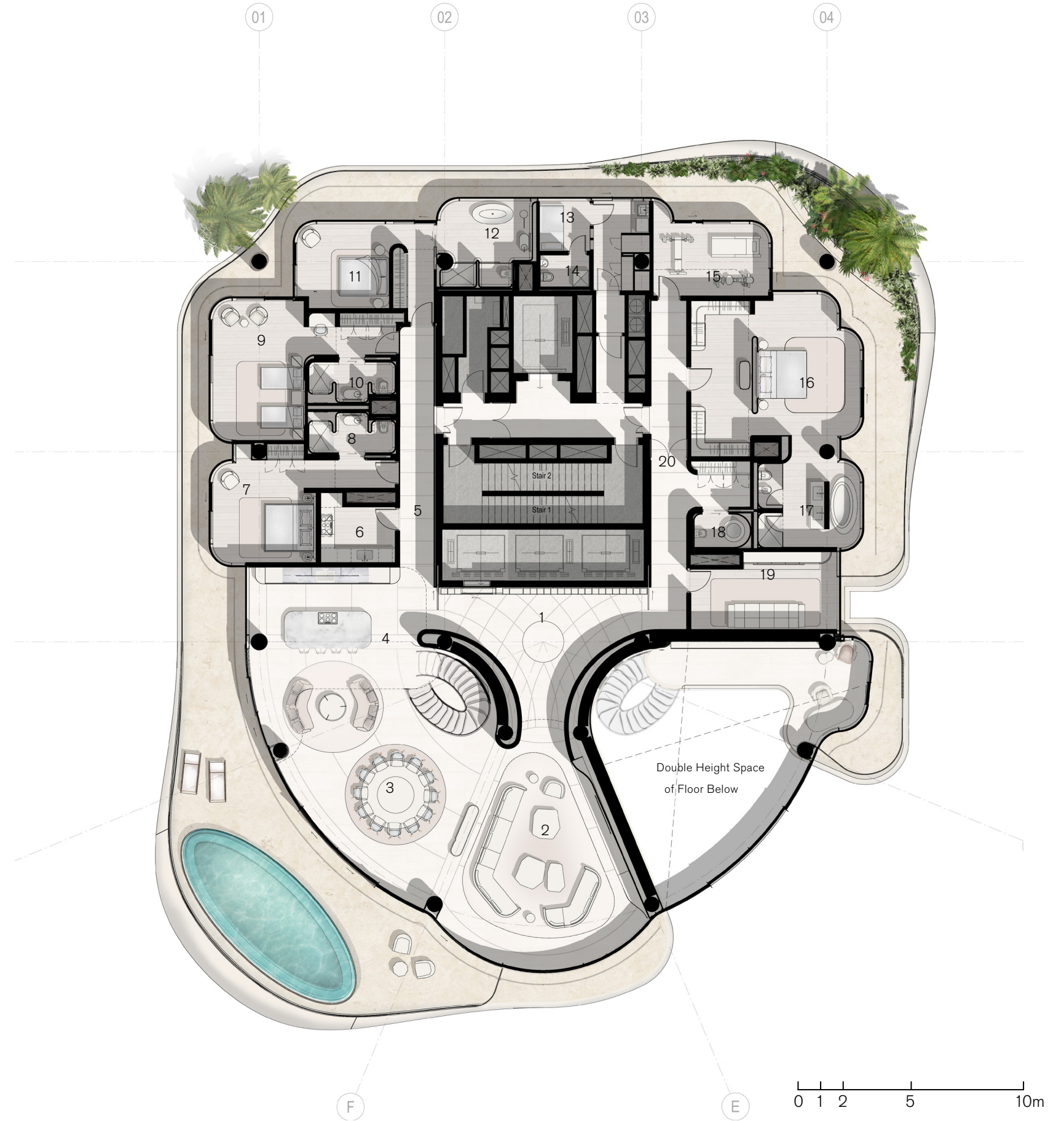
- External Area - 188m²

- Mezzanine Balcony - 12m²

- Swimming Pool - 32m²

- Garden - 16m²

Internal + Terrace Area - 862m²



- | | |
|--|--|
| 1. Foyer - 30 m ² | 11. Guest Bedroom - 24m ² |
| 2. Living - 71 m ² | 12. Guest Bathroom - 15m ² |
| 3. Dining - 67 m ² | 13. Maid's Bedroom - 6 m ² |
| 4. Display Kitchen - 49 m ² | 14. Maid's Bathroom - 4 m ² |
| 5. Hallway - 28m ² | 15. Gym - 18 m ² |
| 6. Prep Kitchen - 10m ² | 16. Master Bedroom - 49 m ² |
| 7. Guest Bedroom - 29 m ² | 17. Master Bathroom - 21 m ² |
| 8. Guest Bathroom - 8m ² | 18. Powder Room - 4 m ² |
| 9. Guest Bedroom - 34 m ² | 19. Cinema / Convertible Family Room - 21 m ² |
| 10. Guest Bathroom - 7 m ² | 20. Hallway - 18 m ² |

Apartment Layouts

Penthouse 6 Bedroom Unit - Lower Living and Amenities Floor

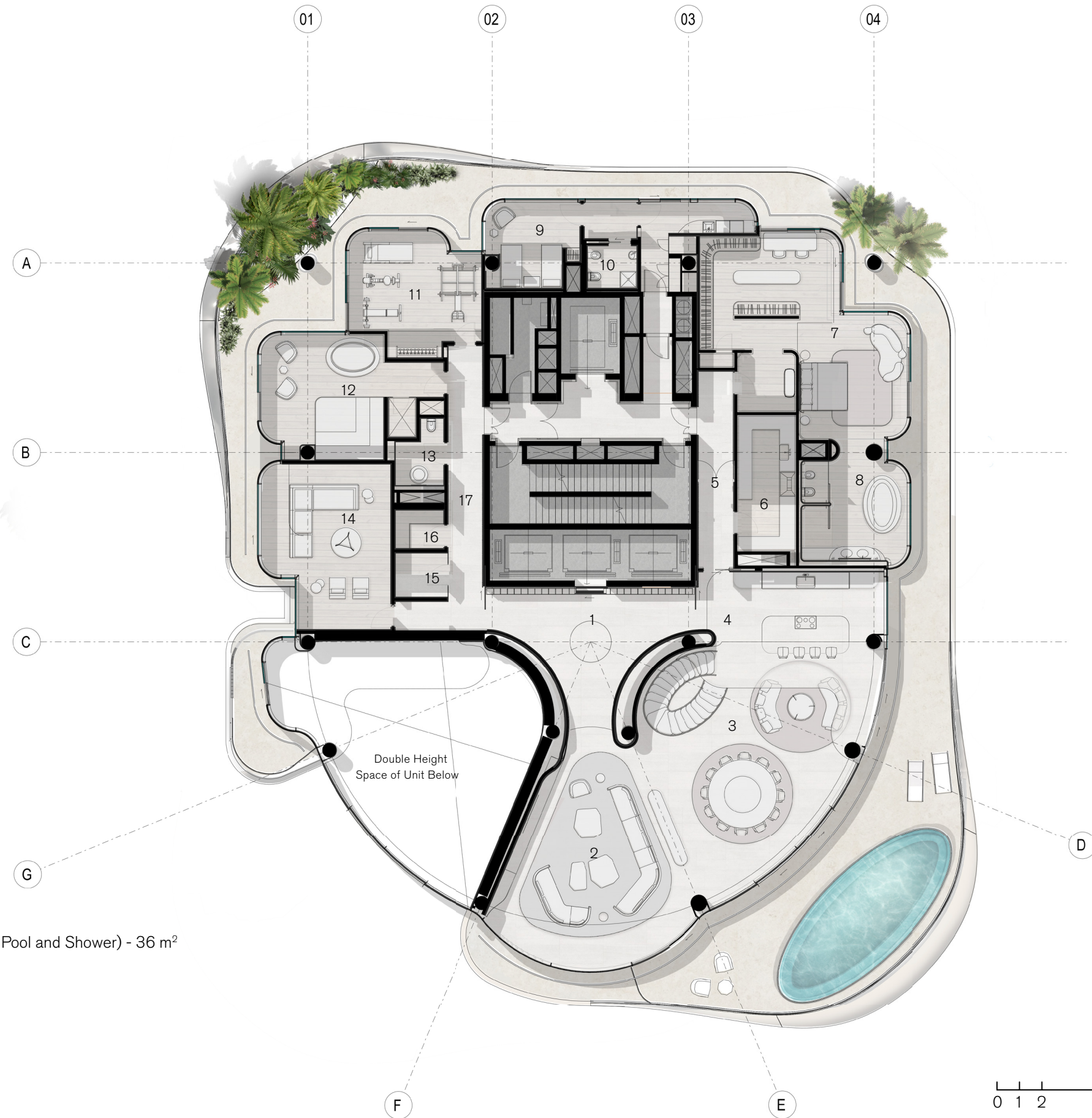
Total of 1 unit (Levels 10+11)

Internal Area - 1215 m²

Terrace Area - 526m²

- External Area - 430m²
- Swimming Pool - 64m²
- Garden - 32m²

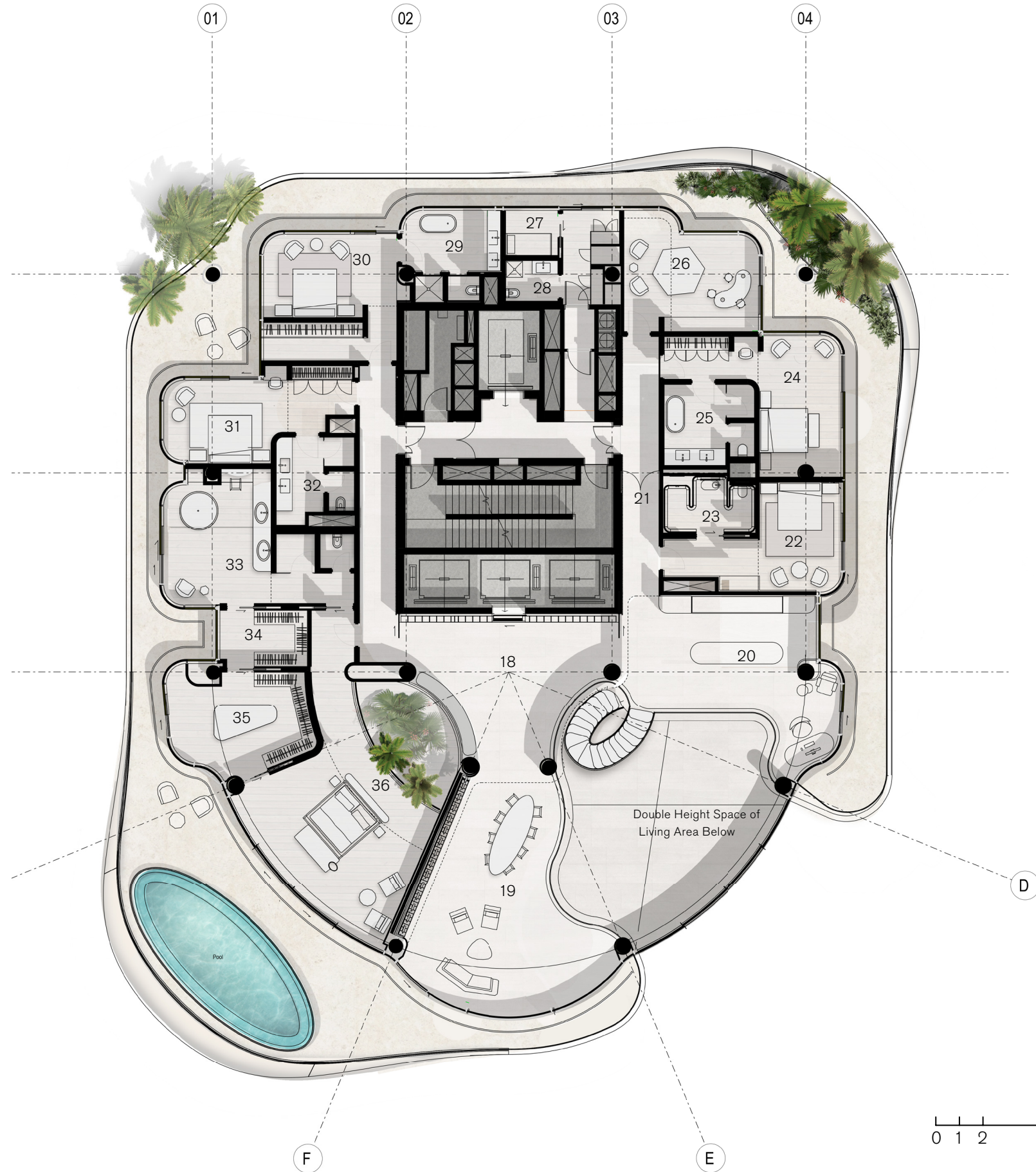
Internal + Terrace Area - 1741 m²



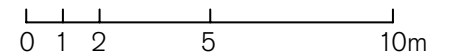
- | | |
|--|--|
| 1 Foyer - 40 m ² | 10. Maid's Bathroom - 5 m ² |
| 2. Living - 66 m ² | 11. Gym - 30 m ² |
| 3. Dining - 69 m ² | 12. Wet Area (Sauna, Plunge Pool and Shower) - 36 m ² |
| 4. Display Kitchen - 48 m ² | 13. Powder Room - 7 m ² |
| 5. Hallway - 12 m ² | 14. Family Room - 40 m ² |
| 6. Prep Kitchen - 17 m ² | 15. Wine Cellar - 5 m ² |
| 7. Master Bedroom - 54 m ² | 16. Coat Closet - 5 m ² |
| 8. Master Bathroom - 23m ² | 17. Hallway - 22 m ² |
| 9. Maid's Room - 16 m ² | |

Apartment Layouts

Penthouse 6 Bedroom Unit - Upper Private Floor



- 18. Foyer - 42 m²
- 19. Living/Dining - 62 m²
- 20. Display Kitchen - 49 m²
- 21. Hallway - 19 m²
- 22. Guest Bedroom - 25 m²
- 23. Guest Bathroom - 10 m²
- 24. Guest Bedroom - 30 m²
- 25. Guest Bathroom - 14 m²
- 26. Play Room - 27 m²
- 27. Maid's Bedroom - 5 m²
- 28. Maid's Bathroom - 5 m²
- 29. Guest Bathroom - 15 m²
- 30. Guest Bedroom - 32 m²
- 31. Guest Bedroom - 26 m²
- 32. Guest Bathroom - 12 m²
- 33. Master Bathroom - 38 m²
- 34. Master Wardrobe 01 - 10 m²
- 35. Master Wardrobe 02 - 25 m²
- 36. Master Bedroom 01 - 47 m²



Note: The areas shown are indicative and should only be used as a reference to calculate the leasable area