

Last Prime Waterfront Location
in the Heart of Dubai Marina.

HANDING OVER SOON

25% DOWNPAYMENT

75% ON COMPLETION



LIV
RESIDENCE
DUBAI MARINA

AVAILABILITY LIST - FEBRUARY 2020

UNIT #	UNIT TYPE	VIEW	AREA (sq.ft.)	PRICE	
203	Studio	JBR/Street View	461 sq. ft.	AED 837,548	USD 228,838
103	Studio + Study	JBR/Street View	562 sq. ft.	AED 884,548	USD 241,680
102	Studio	JBR/Street View	547 sq. ft.	AED 909,548	USD 248,510
302	Studio	JBR/Street View	507 sq. ft.	AED 949,548	USD 259,439
902	Studio	JBR/Sea View	504 sq. ft.	AED 1,029,548	USD 281,297
903	Studio	JBR/Sea View	529 sq. ft.	AED 1,069,548	USD 292,226
205	1 BR	JBR/Sea View	871 sq. ft.	AED 1,354,548	USD 370,095
2001	2 BR	Marina View & Sea View	1,329 sq. ft.	AED 2,044,548	USD 558,619
1102	2 BR	JBR/Sea View	1,385sq. ft.	AED 2,077,548	USD 567,636
2401	2 BR	Marina View & Sea View	1,320 sq. ft.	AED 2,089,548	USD 570,915
2402	2 BR + Maids	JBR / Sea View	1,428 sq. ft.	AED 2,159,548	USD 590,040
101	2 BR + Maids	Marina View / JBR View	1,483 sq. ft.	AED 2,279,548	USD 622,827
106	2 BR + Maids + Study	Marina View & Sea View	2,292 sq. ft.	AED 3,389,548	USD 926,107
201	2 BR + Garden	Garden w/ Skyline View	1,950 sq. ft.	AED 2,259,548	USD 617,363
2503	3 BR	Marina View & Sea View	2,982 sq. ft.	AED 4,999,548	USD 1,365,997
305	3 BR	Marina View & Terrace, JBR Views	4,373 sq. ft.	AED 4,899,548	USD 1,338,674
2603	4 BR SIGNATURE PH	Marina View	4,717 sq. ft.	AED 9,990,548	USD 2,458,893

Be First to visit our Exquisitely designed Show Apartment Located at LIV Lounge ,
Suite 905 - Marina Plaza

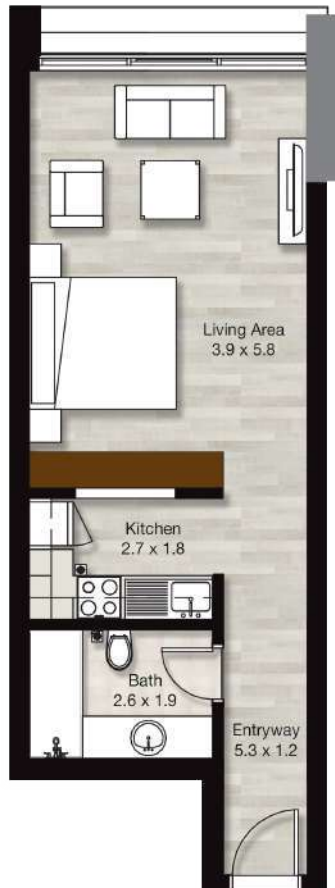
Disclaimer: Prices are correct at time of distribution and subject to change without prior notice.

Level 2
Apartment 203



LIV
RESIDENCE
DUBAI MARINA

Studio Apartment

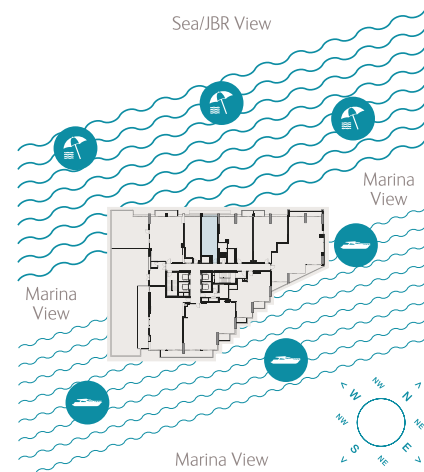


Sample view from the apartment



Apartment Area	42.83 sqm	461.02 sqft
Balcony Area	0.00 sqm	0.00 sqft
Total Area	42.83 sqm	461.02 sqft

Drawings are provided by our consultants. All dimensions, features and amenities are approximate at the time of printing. Actual area may vary from stated area. Drawings not to scale E & OE. The Developer reserves the right to make revisions to the floor plans and any features, materials and dimensions mentioned without further notice. Sample views are indicative and may differ or be subject to change.



Level 1
Apartment 103



LIV
RESIDENCE
DUBAI MARINA

Studio Apartment with Study

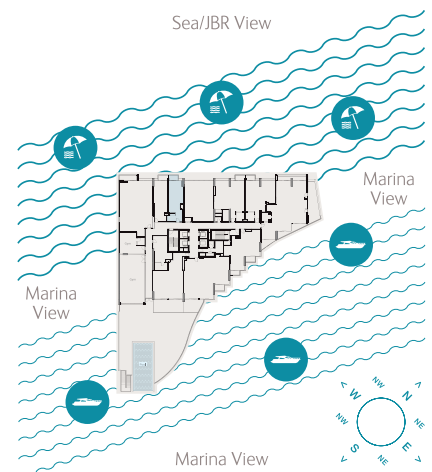


Sample view from the apartment



Apartment Area	47.02 sqm	506.12 sqft
Balcony Area	5.15 sqm	55.43 sqft
Total Area	52.17 sqm	561.55 sqft

Drawings are provided by our consultants. All dimensions, features and amenities are approximate at the time of printing. Actual area may vary from stated area. Drawings not to scale E & OE. The Developer reserves the right to make revisions to the floor plans and any features, materials and dimensions mentioned without further notice. Sample views are indicative and may differ or be subject to change.



Level 1
Apartment 102



LIV
RESIDENCE
DUBAI MARINA

Studio Apartment

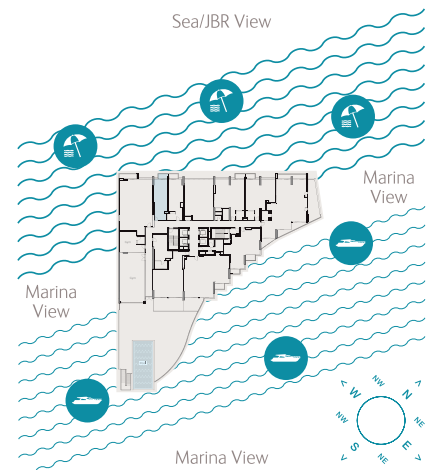


Sample view from the apartment



Apartment Area	45.87 sqm	493.74 sqft
Balcony Area	4.97 sqm	53.50 sqft
Total Area	50.84 sqm	547.24 sqft

Drawings are provided by our consultants. All dimensions, features and amenities are approximate at the time of printing. Actual area may vary from stated area. Drawings not to scale E & OE. The Developer reserves the right to make revisions to the floor plans and any features, materials and dimensions mentioned without further notice. Sample views are indicative and may differ or be subject to change.



Level 3
Apartment 302

Studio Apartment



LIV
RESIDENCE
DUBAI MARINA

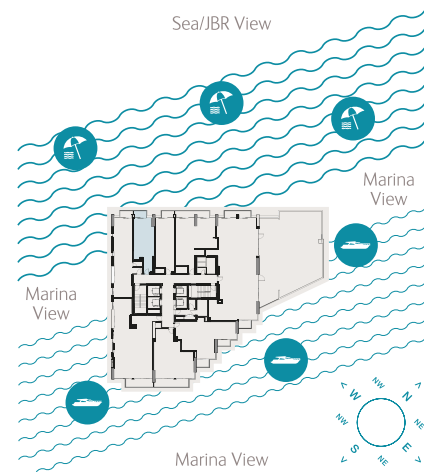


Sample view from the apartment



Apartment Area	41.94 sqm	451.44 sqft
Balcony Area	5.15 sqm	55.43 sqft
Total Area	47.09 sqm	506.87 sqft

Drawings are provided by our consultants. All dimensions, features and amenities are approximate at the time of printing. Actual area may vary from stated area. Drawings not to scale E & OE. The Developer reserves the right to make revisions to the floor plans and any features, materials and dimensions mentioned without further notice. Sample views are indicative and may differ or be subject to change.



Level 9
Apartment 902



LIV
RESIDENCE
DUBAI MARINA

Studio Apartment

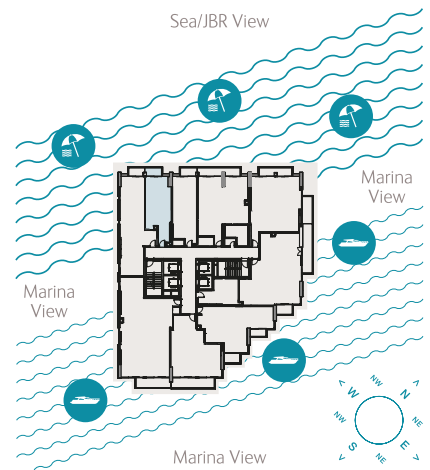


Sample view from the apartment



Apartment Area	41.72 sqm	449.07 sqft
Balcony Area	5.15 sqm	55.43 sqft
Total Area	46.87 sqm	504.50 sqft

Drawings are provided by our consultants. All dimensions, features and amenities are approximate at the time of printing. Actual area may vary from stated area. Drawings not to scale E & OE. The Developer reserves the right to make revisions to the floor plans and any features, materials and dimensions mentioned without further notice. Sample views are indicative and may differ or be subject to change.



Level 9
Apartment 903



LIV
RESIDENCE
DUBAI MARINA

Studio Apartment

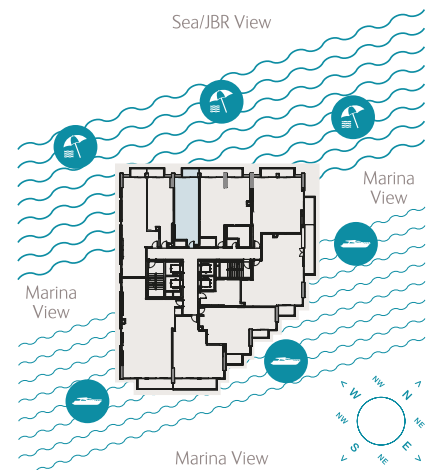


Sample view from the apartment



Apartment Area	44.02 sqm	473.83 sqft
Balcony Area	5.15 sqm	55.43 sqft
Total Area	49.17 sqm	529.26 sqft

Drawings are provided by our consultants. All dimensions, features and amenities are approximate at the time of printing. Actual area may vary from stated area. Drawings not to scale E & OE. The Developer reserves the right to make revisions to the floor plans and any features, materials and dimensions mentioned without further notice. Sample views are indicative and may differ or be subject to change.

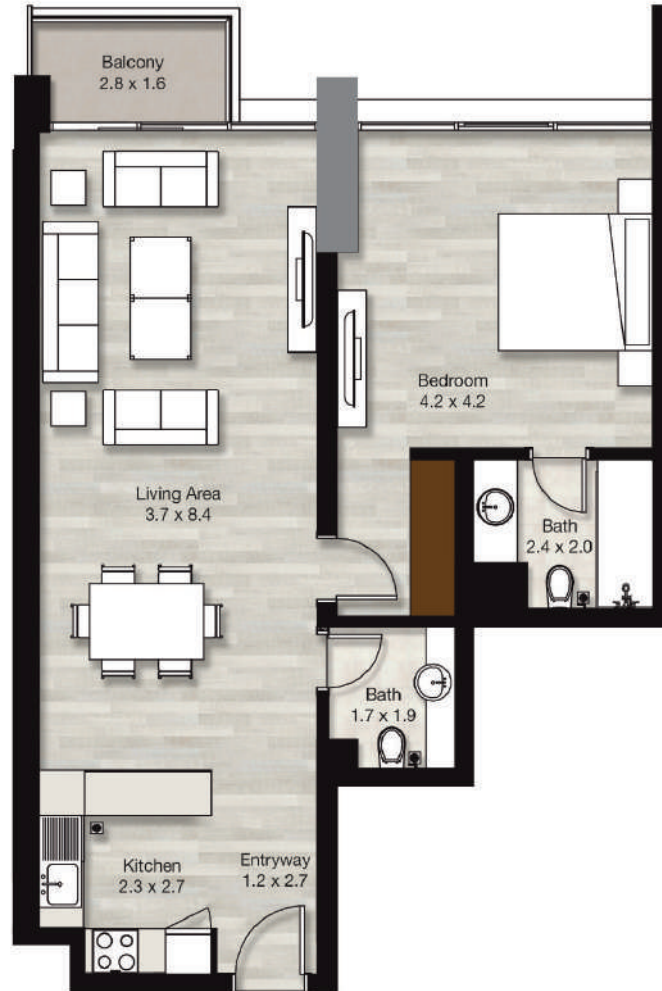


Level 2
Apartment 205

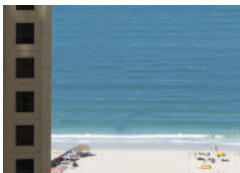


LIV
RESIDENCE
DUBAI MARINA

1 BR Apartment

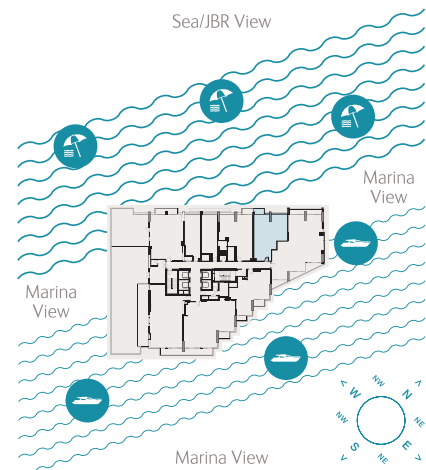


Sample view from the apartment



Apartment Area	75.96 sqm	817.63 sqft
Balcony Area	4.98 sqm	53.60 sqft
Total Area	80.94 sqm	871.23 sqft

Drawings are provided by our consultants. All dimensions, features and amenities are approximate at the time of printing. Actual area may vary from stated area. Drawings not to scale E & OE. The Developer reserves the right to make revisions to the floor plans and any features, materials and dimensions mentioned without further notice. Sample views are indicative and may differ or be subject to change.



Level 20
Apartment 2001

2 BR Apartment



LIV
RESIDENCE
DUBAI MARINA

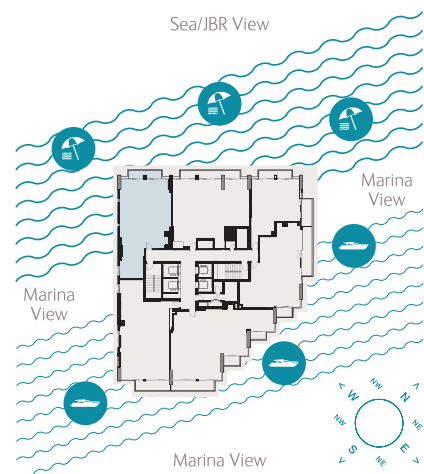


Sample view from the apartment



Apartment Area	113.33 sqm	1,219.87 sqft
Balcony Area	10.12 sqm	108.93 sqft
Total Area	123.45 sqm	1,328.80 sqft

Drawings are provided by our consultants. All dimensions, features and amenities are approximate at the time of printing. Actual area may vary from stated area. Drawings not to scale E & OE. The Developer reserves the right to make revisions to the floor plans and any features, materials and dimensions mentioned without further notice. Sample views are indicative and may differ or be subject to change.



Level 11
Apartment 1102



LIV
RESIDENCE
DUBAI MARINA

2 BR Apartment

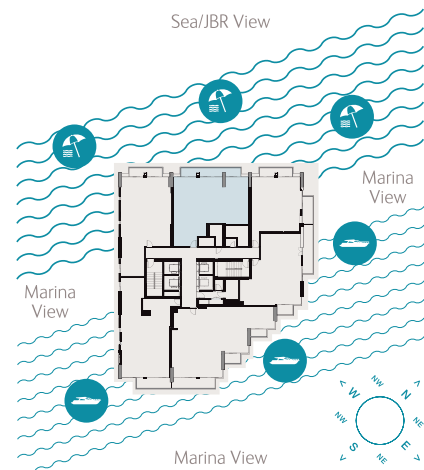


Sample view from the apartment



Apartment Area	111.72 sqm	1,202.54 sqft
Balcony Area	16.93 sqm	182.23 sqft
Total Area	128.65 sqm	1,384.78 sqft

Drawings are provided by our consultants. All dimensions, features and amenities are approximate at the time of printing. Actual area may vary from stated area. Drawings not to scale E & OE. The Developer reserves the right to make revisions to the floor plans and any features, materials and dimensions mentioned without further notice. Sample views are indicative and may differ or be subject to change.

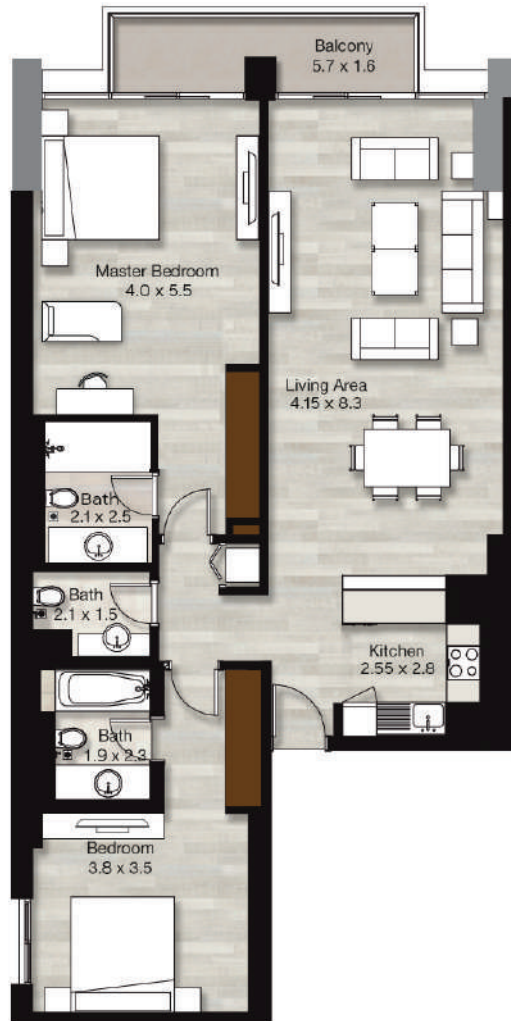


Level 24
Apartment 2401

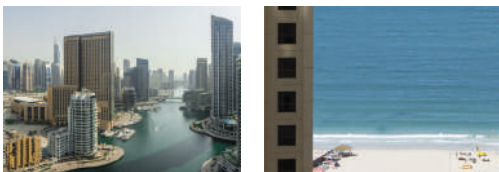


LIV
RESIDENCE
DUBAI MARINA

2 BR Apartment

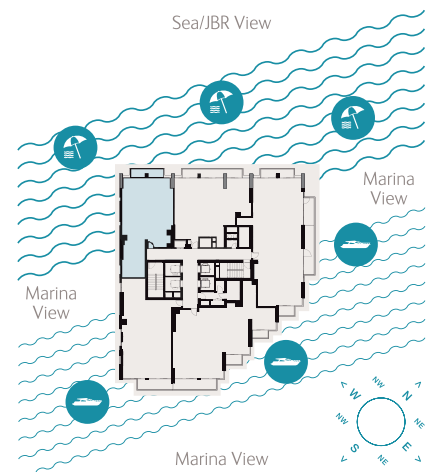


Sample view from the apartment



Apartment Area	112.48 sqm	1,210.72 sqft
Balcony Area	10.13 sqm	109.04 sqft
Total Area	122.61 sqm	1,319.76 sqft

Drawings are provided by our consultants. All dimensions, features and amenities are approximate at the time of printing. Actual area may vary from stated area. Drawings not to scale E & OE. The Developer reserves the right to make revisions to the floor plans and any features, materials and dimensions mentioned without further notice. Sample views are indicative and may differ or be subject to change.



Levels 24
Apartment 2402

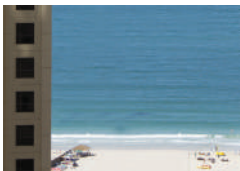


LIV
RESIDENCE
DUBAI MARINA

2 BR Apartment

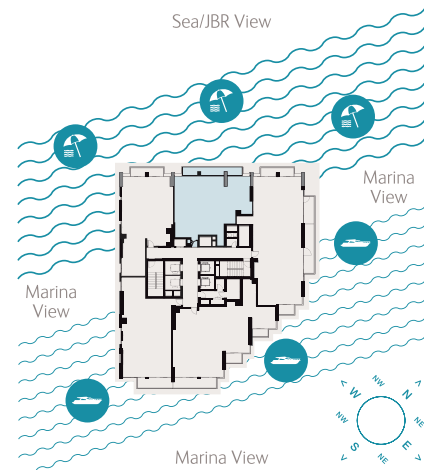


Sample view from the apartment



Apartment Area	115.72 sqm	1,245.60 sqft
Balcony Area	16.92 sqm	182.13 sqft
Total Area	132.64 sqm	1,427.73 sqft

Drawings are provided by our consultants. All dimensions, features and amenities are approximate at the time of printing. Actual area may vary from stated area. Drawings not to scale E & OE. The Developer reserves the right to make revisions to the floor plans and any features, materials and dimensions mentioned without further notice. Sample views are indicative and may differ or be subject to change.

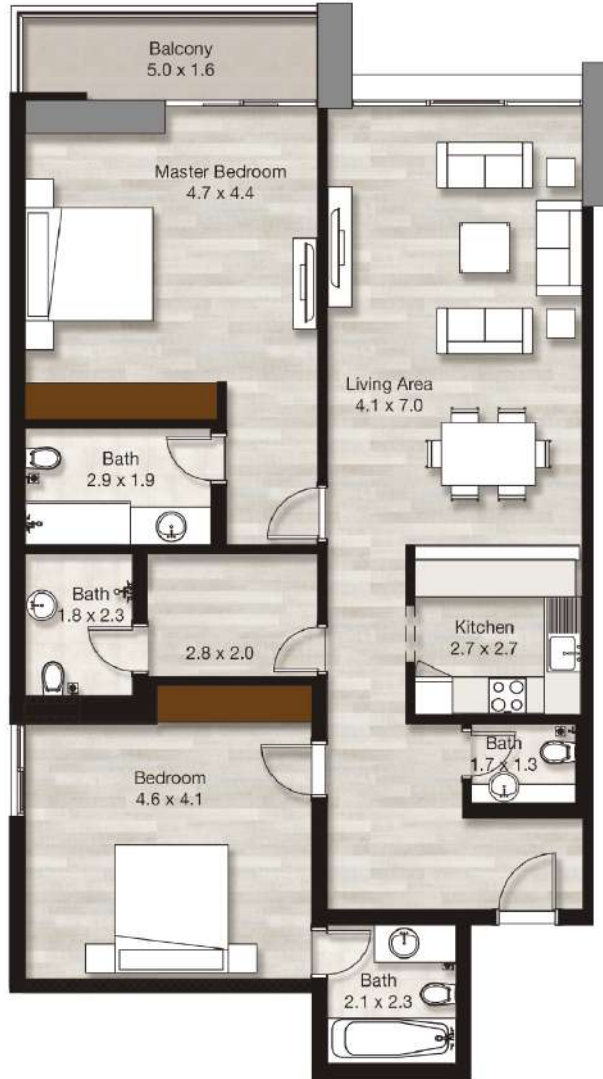


Level 1
Apartment 101

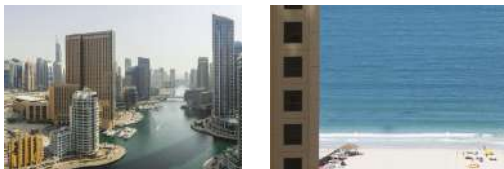


LIV
RESIDENCE
DUBAI MARINA

2 BR Apartment

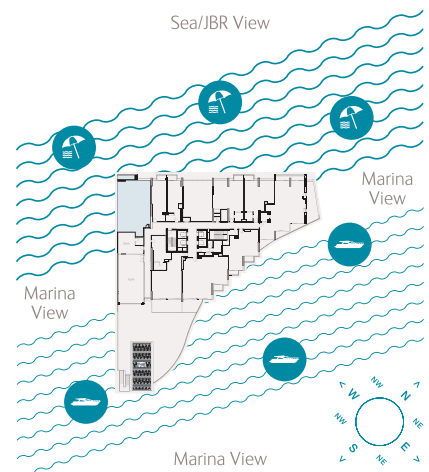


Sample view from the apartment



Apartment Area	129.10 sqm	1389.62 sqft
Balcony Area	8.70 sqm	93.65 sqft
Total Area	137.80 sqm	1483.27 sqft

Drawings are provided by our consultants. All dimensions, features and amenities are approximate at the time of printing. Actual area may vary from stated area. Drawings not to scale E & OE. The Developer reserves the right to make revisions to the floor plans and any features, materials and dimensions mentioned without further notice. Sample views are indicative and may differ or be subject to change.

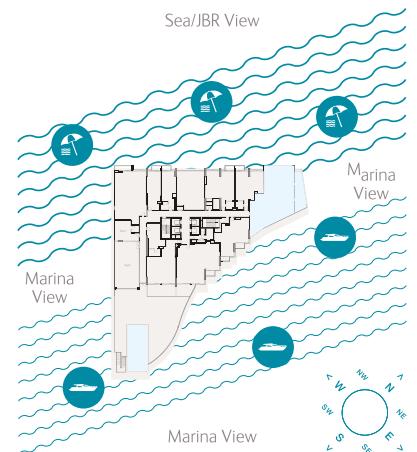


Level 1
Apartment 106



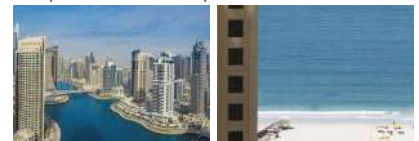
LIV
RESIDENCE
DUBAI MARINA

2 BR + Maid Apartment



Apartment Area	144.11 sqm	1,551.19 sqft
Balcony Area	68.80 sqm	740.56 sqft
Total Area	212.91 sqm	2,291.74 sqft

Sample view from the apartment



Drawings are provided by our consultants. All dimensions, features and amenities are approximate at the time of printing. Actual area may vary from stated area. Drawings not to scale E & OE. The Developer reserves the right to make revisions to the floor plans and any features, materials and dimensions mentioned without further notice. Sample views are indicative and may differ or be subject to change.

SIGNATURE
COLLECTION

Level 2
Apartment 201

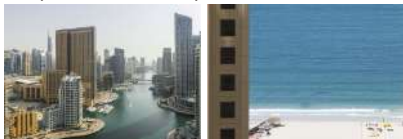


LIV
RESIDENCE
DUBAI MARINA

3 BR Apartment

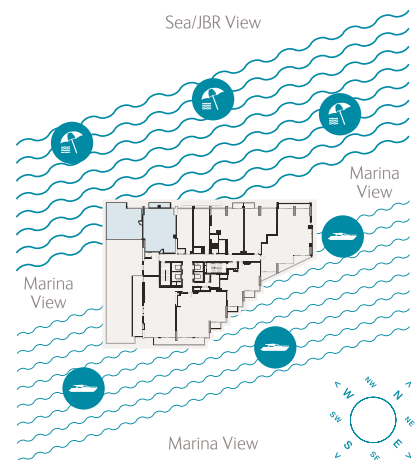


Sample view from the apartment



Apartment Area	90.54 sqm	974.56 sqft
Balcony Area	90.66 sqm	975.86 sqft
Total Area	181.20 sqm	1,950.42 sqft

Drawings are provided by our consultants. All dimensions, features and amenities are approximate at the time of printing. Actual area may vary from stated area. Drawings not to scale E & OE. The Developer reserves the right to make revisions to the floor plans and any features, materials and dimensions mentioned without further notice. Sample views are indicative and may differ or be subject to change.



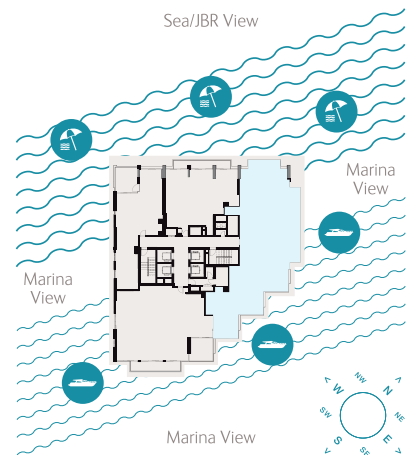
SIGNATURE
COLLECTION

Level 25
Apartment 2503



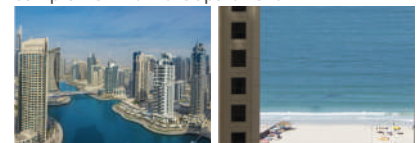
LIV
RESIDENCE
DUBAI MARINA

3 BR Apartment



Apartment Area	190.06 sqm	2,045.79 sqft
Balcony Area	86.96 sqm	936.03 sqft
Total Area	277.02 sqm	2,981.82 sqft

Sample view from the apartment



Drawings are provided by our consultants. All dimensions, features and amenities are approximate at the time of printing. Actual area may vary from stated area. Drawings not to scale E & OE. The Developer reserves the right to make revisions to the floor plans and any features, materials and dimensions mentioned without further notice. Sample views are indicative and may differ or be subject to change.



Level 3
Apartment 305



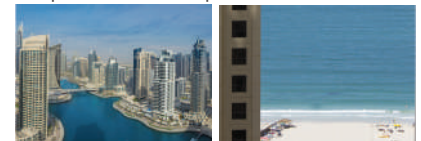
LIV
RESIDENCE
DUBAI MARINA

3 BR Apartment



Apartment Area	180.79 sqm	1,946.01 sqft
Balcony Area	225.46 sqm	2,426.83 sqft
Total Area	406.25 sqm	4,372.84 sqft

Sample view from the apartment



Drawings are provided by our consultants. All dimensions, features and amenities are approximate at the time of printing. Actual area may vary from stated area. Drawings not to scale E & OE. The Developer reserves the right to make revisions to the floor plans and any features, materials and dimensions mentioned without further notice. Sample views are indicative and may differ or be subject to change.





LIV
RESIDENCE
DUBAI MARINA



UNIT 2603

SIGNATURE
DUPEX PENTHOUSES

4 BEDROOM 4,717.28 SQFT



APARTMENT AREA	292.03 sqm	3,143.38 sqft
BALCONY AREA	146.22 sqm	1,573.90 sqft
TOTAL AREA	438.25 sqm	4,717.28 sqft

Drawings are provided for your information. All dimensions, features and amenities are approximate as of the time of printing. Actual area may vary from stated area. Drawings not to scale. © 2018. The Developer reserves the right to make revisions to the floor plan and any features, materials and dimensions mentioned without further notice. Sample views are illustrative and may differ or be subject to change.

