

EARTH

MANSION



THE RITZ-CARLTON
RESIDENCES

DUBAI, CREEKSIDE

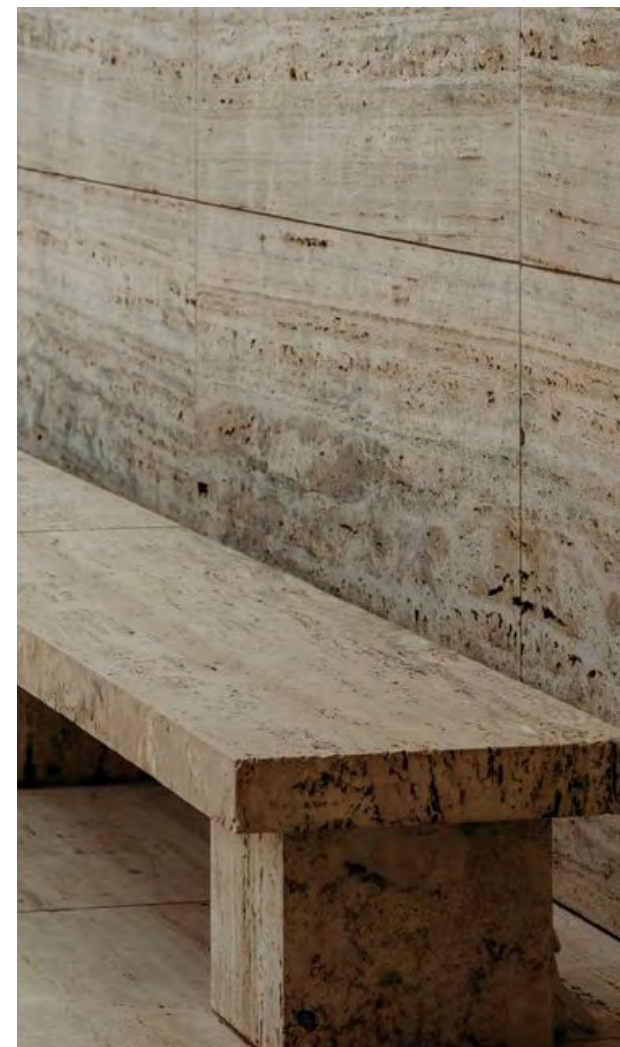
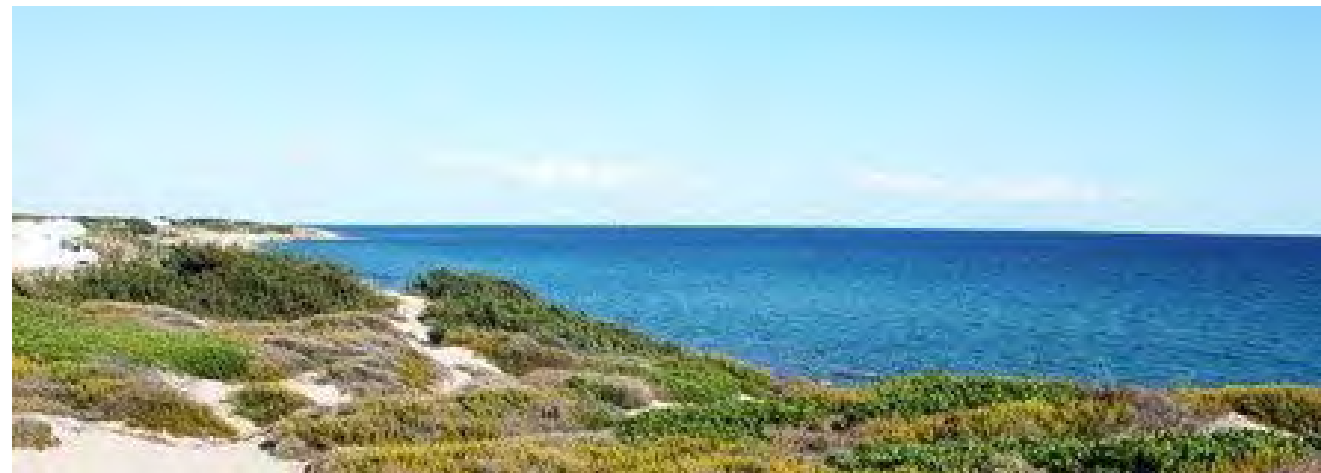


Earth Mansion

INSPIRATION

The Earth Mansion is a unique waterfront project with stunning panoramic views that overlook the Dubai Creekside, the Ras Al Khor Wildlife Sanctuary, and Downtown Dubai.

Architecture and the environment combine seamlessly to create a grounded yet energizing atmosphere throughout the home.





The Wealth Of Wellbeing

A NEW FORM OF WEALTH

KETURAH Resort represents a new generation of living spaces, offering individuals state-of-the-art, curated environments dedicated to wellness

and determined to reinvent the spaces that shape the way its inhabitants move, breathe, rest, work, play and interact with the world around them.



THE ARABIAN GULF

DUBAI FRAME

DUBAI INTERNATIONAL AIRPORT (DXB)

TRADE CENTRE

DUBAI GLOW GARDEN

DUBAI INTERNATIONAL FINANCIAL CENTRE

THE RITZ-CARLTON RESIDENCES
DUBAI, CREEKSIDE

DUBAI CREEK HARBOUR

12 MIN

10 MIN

BURJ KHALIFA

15 MIN

10 MIN

DUBAI CREEK

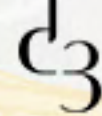
DUBAI OPERA

DOWNTOWN DUBAI

WILDLIFE SANCTUARY

DUBAI DESIGN DISTRICT

CREEK TOWER

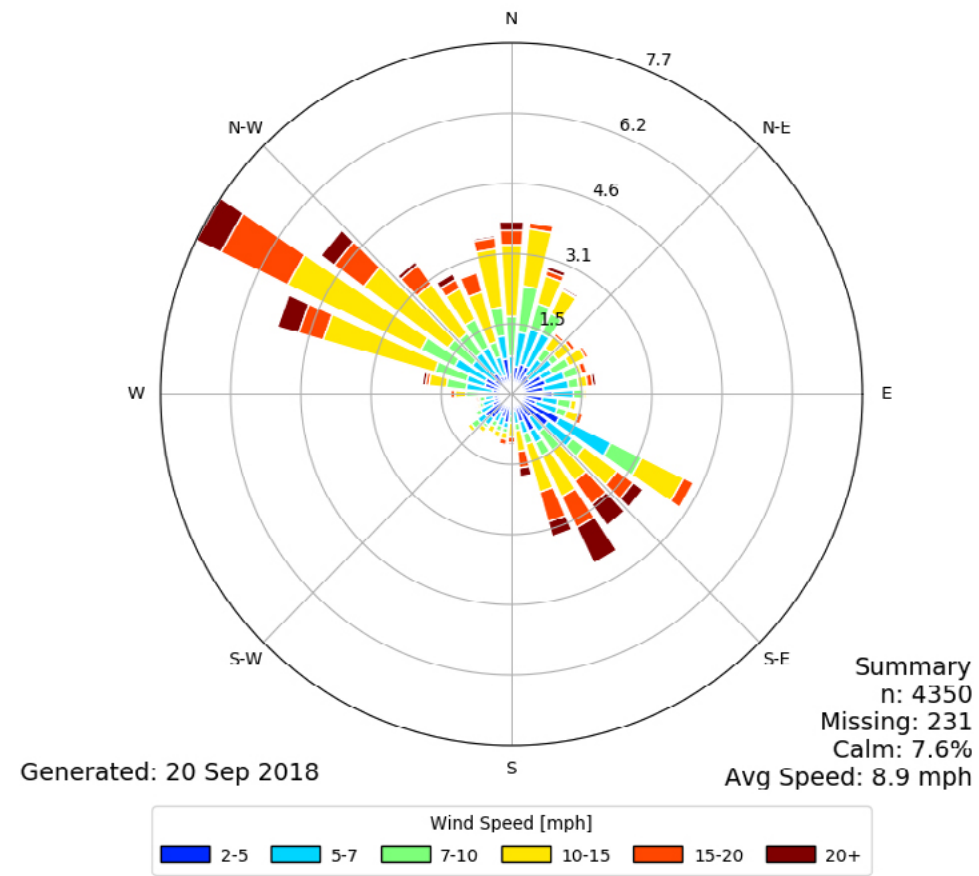


Wellness Site Analysis

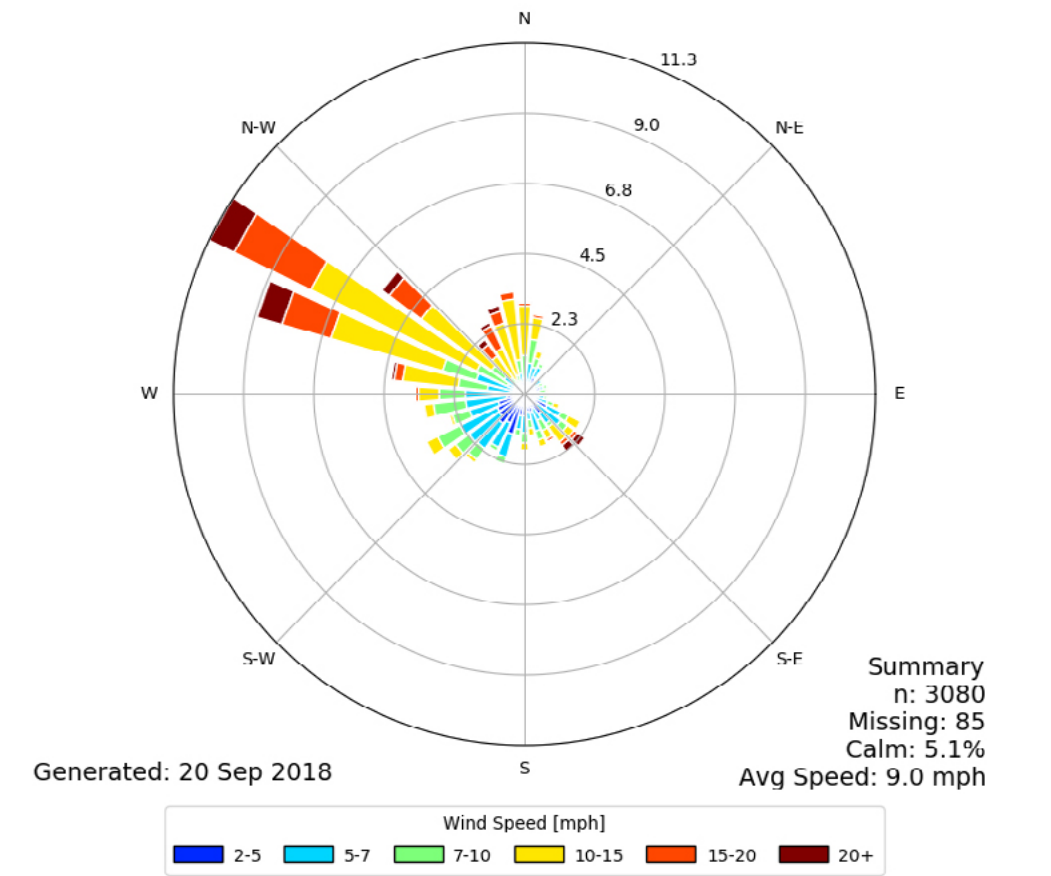
THE WIND STUDY



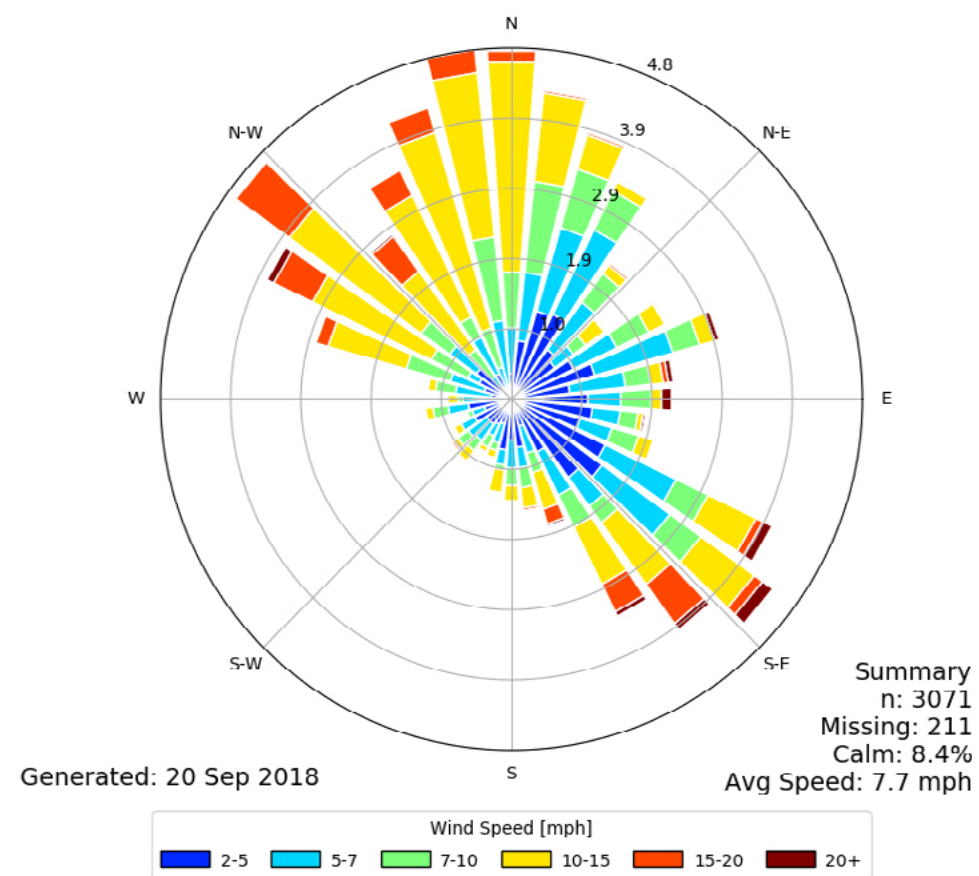
[QGX] AL DHAFRA
Windrose Plot [Time Domain: Mar,]
Period of Record: 01 Mar 2011 - 31 Mar 2016



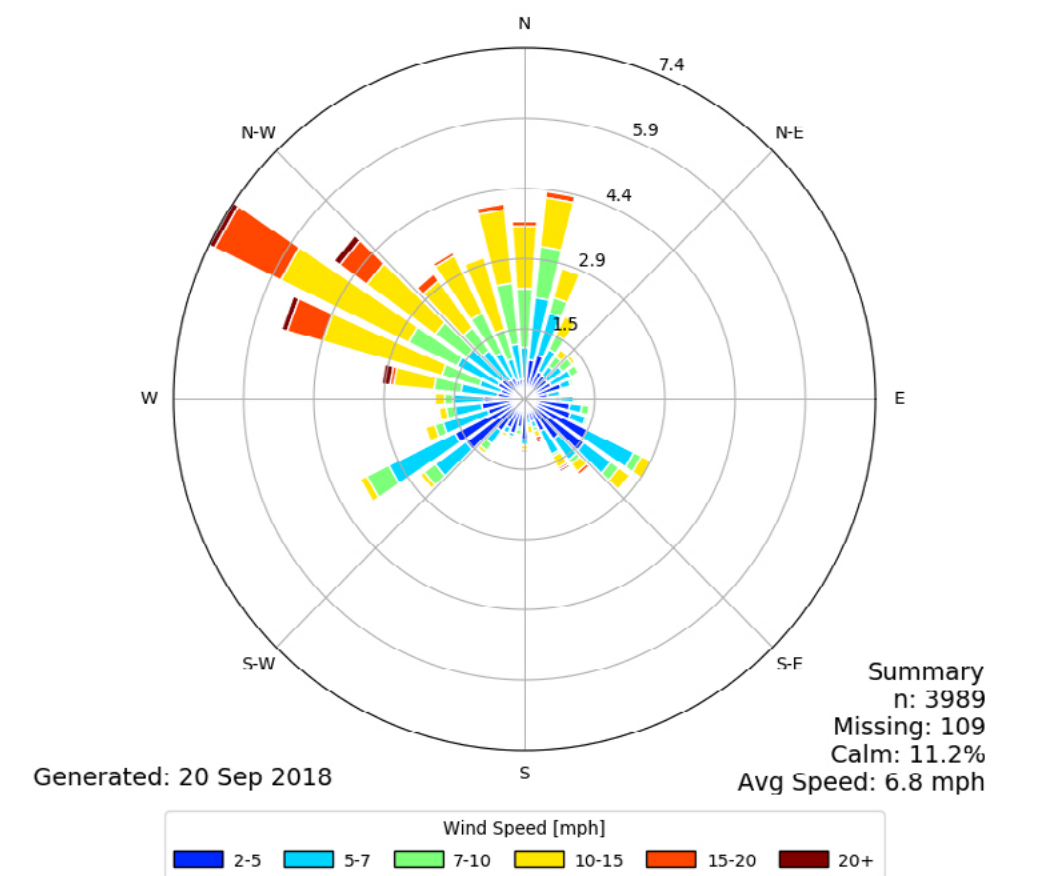
[QGX] AL DHAFRA
Windrose Plot [Time Domain: Jun,]
Period of Record: 07 Jun 2010 - 01 Jul 2015



[QGX] AL DHAFRA
Windrose Plot [Time Domain: Sep,]
Period of Record: 01 Sep 2010 - 01 Oct 2015



[QGX] AL DHAFRA
Windrose Plot [Time Domain: Dec,]
Period of Record: 02 Dec 2010 - 01 Jan 2016





Wellness Site Analysis

THE SUN STUDY

SPRING



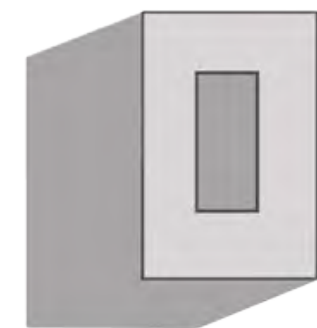
SUMMER



AUTUMN



WINTER





DOWNTOWN
DUBAI



WILDLIFE
SANCTUARY



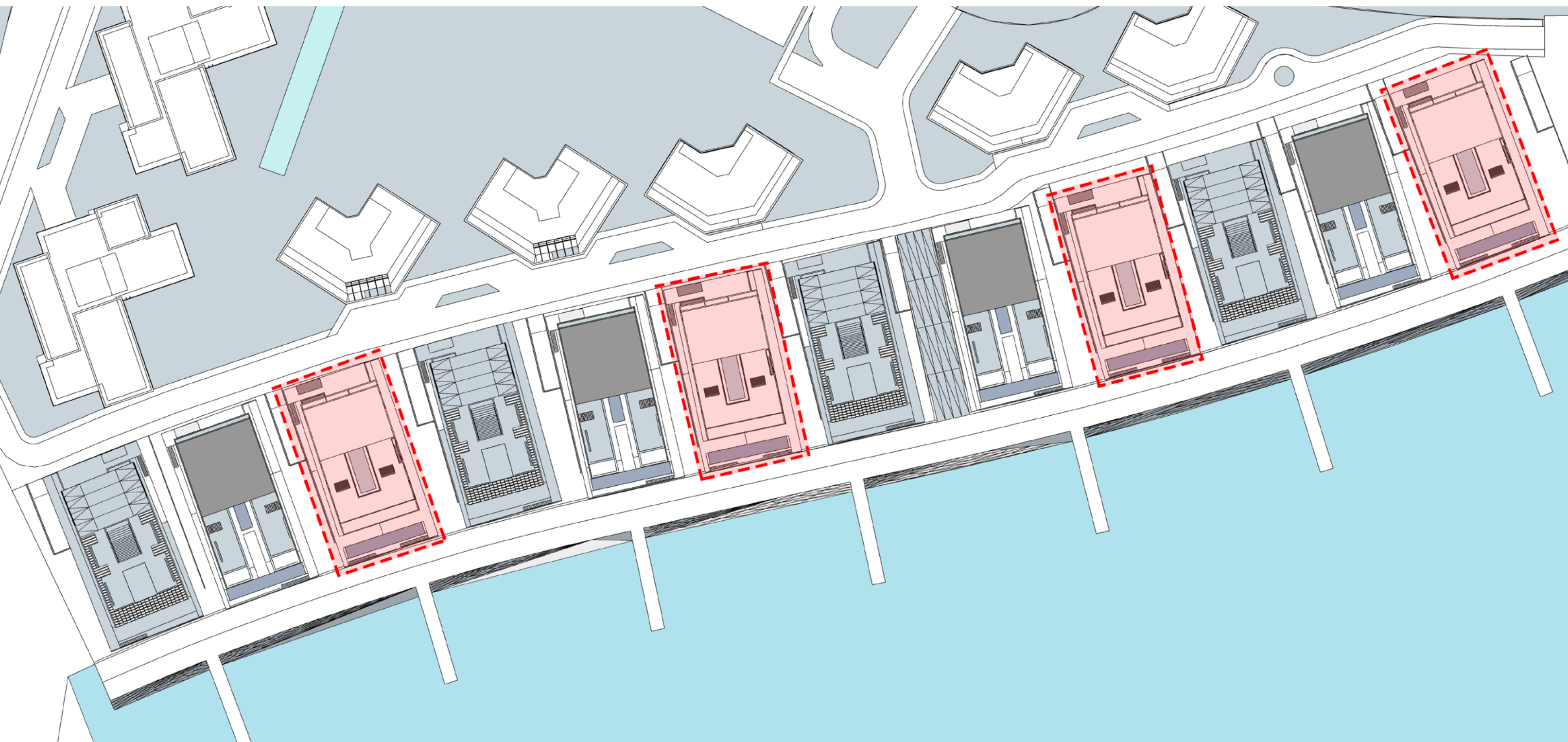
CREEK
VIEW



DUBAI
CREEK
HARBOUR

This drawing is an artistic interpretation of the design. It is not meant to be an exact rendition. Some items may not be standard and/or represent an exact symbol. Exact grading may differ.

One Of-A-Kind Waterfront Living



THE DEVELOPMENT

This spacious and spectacular location offers The Mansion a total surface area of approx. 3,942 sq.m.

The main entrance opens to an exclusive residential area, with easy access to a large, eight-car garage.

The south façade highlights the incredible, private creekside view.



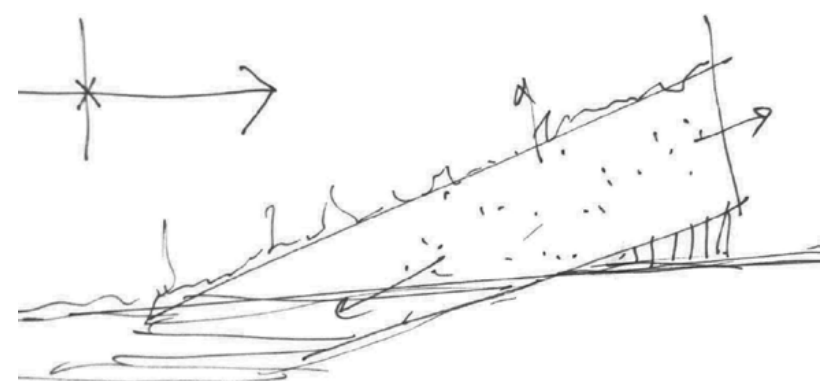


Earth Mansion Concept

FROM SITE'S HISTORY TO A REFLECTION OF THE ELEMENTS

The minimalist architecture composes a space that is in constant dialogue with its surroundings, hidden from the street, yet open wide toward the astonishing water view.

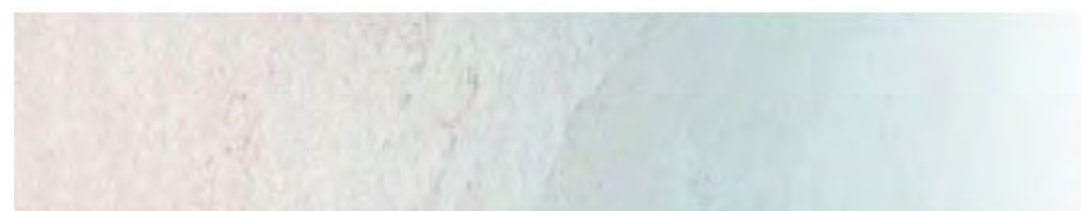
Floor-to-ceiling sliding glass allows for expansive views, seamlessly merging the patio and living rooms to transform into one wide reception area when open.



MASTER ROOFTOP

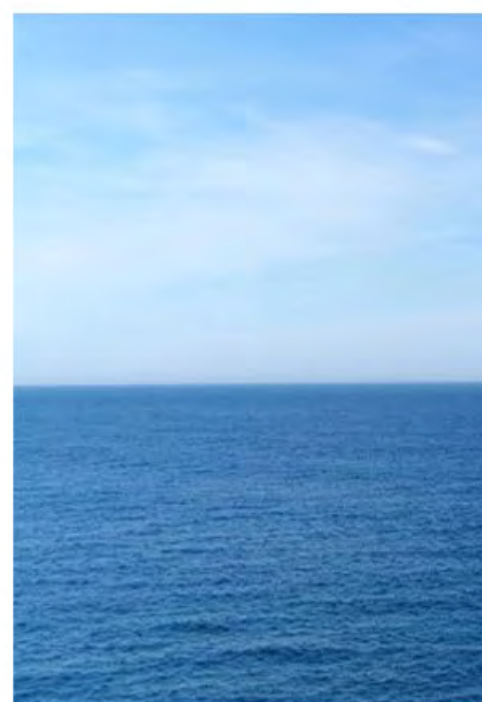


PRIVATE SPACE

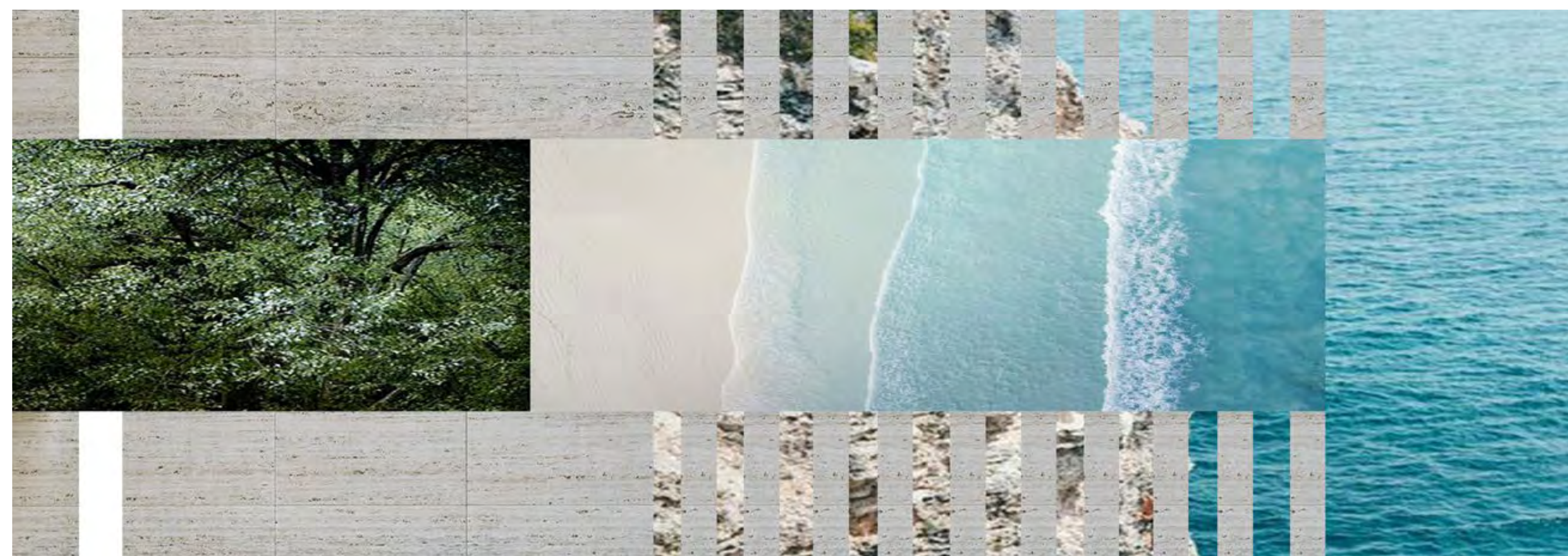


SEA

FLEXIBLE SPACE



CONCEPTUAL ELEVATION



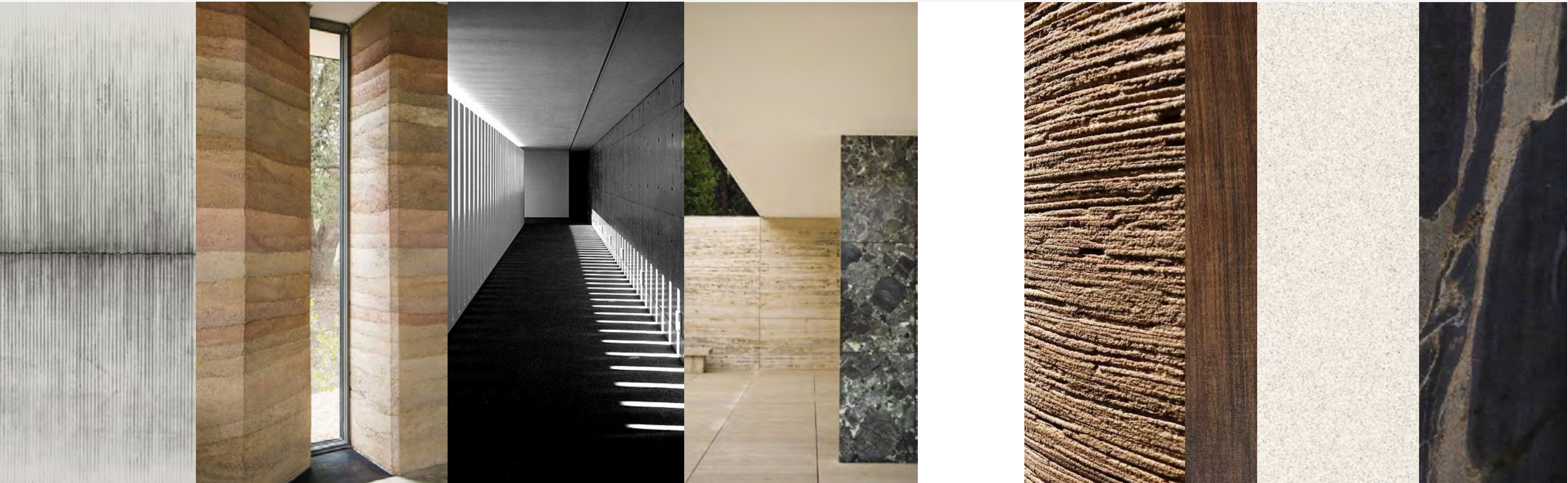
CONCEPTUAL PLAN
MINERAL TO WATER

The beautiful waterfront views are elegantly framed from the moment they are seen from the lobby. The elegance extends throughout The Earth Mansion, designed as a harmonious space facing the creekside.



Earth Mansion *Concept*

MOODBOARD



ORGANIC

GRAVITY

TIME

SEDIMENTATION

NATURE

MOMENT

FIXED

WARM

BRUT

SCULPTURE





LIVING SPACES
SLIDING WINDOWS
GLASS



LIVING SPACES
SLIDING PANELS
WOOD



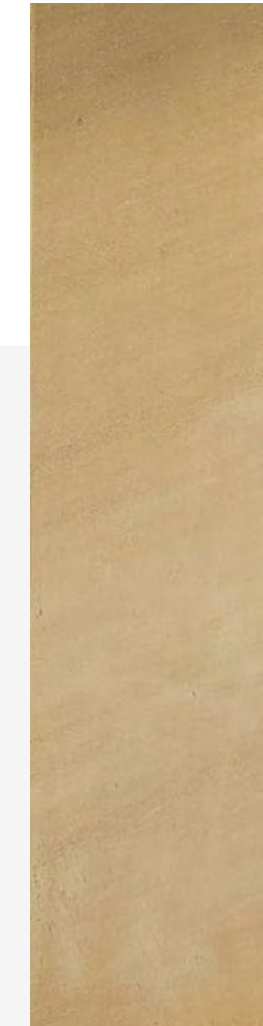
FAMILY PRIVATE SPACE
WHITE TRAVERTINO
STONE LOUVERS

The Facades

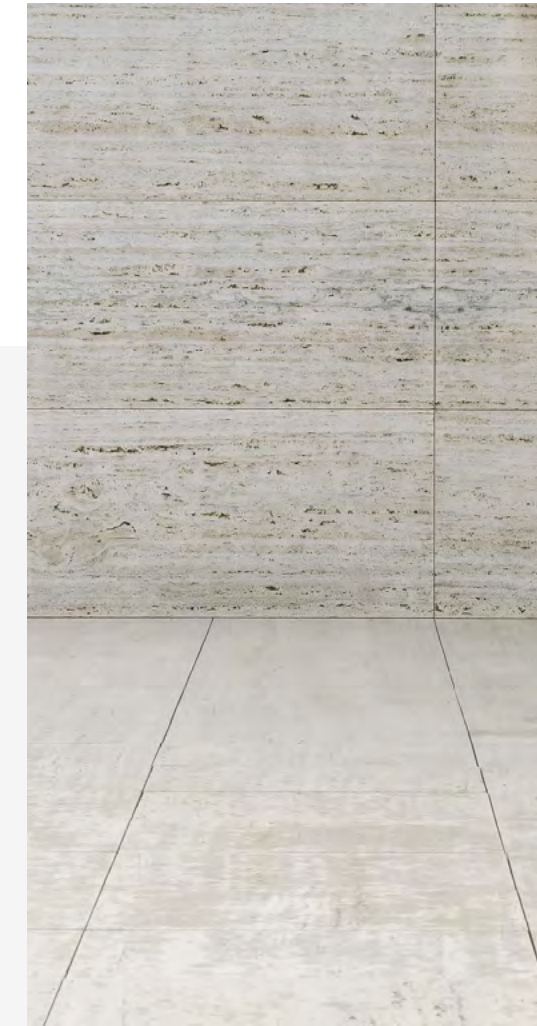
MOODBOARD



GF FACADE
GREEN ALPI
MARBLE



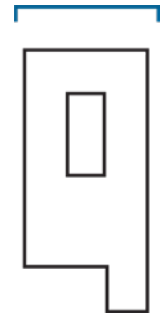
DETAILS
BRASS
METAL



FLOOR
WHITE TRAVERTINO
STONE



FACADE
WHITE TRAVERTINO
STONE



THE SOUTH
FACADE



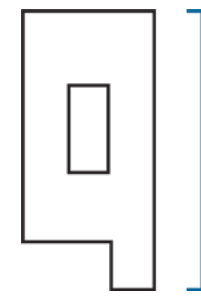
THE NORTH
FACADE



The Facades

PURE MINIMALIST ARCHITECTURE

The Facades

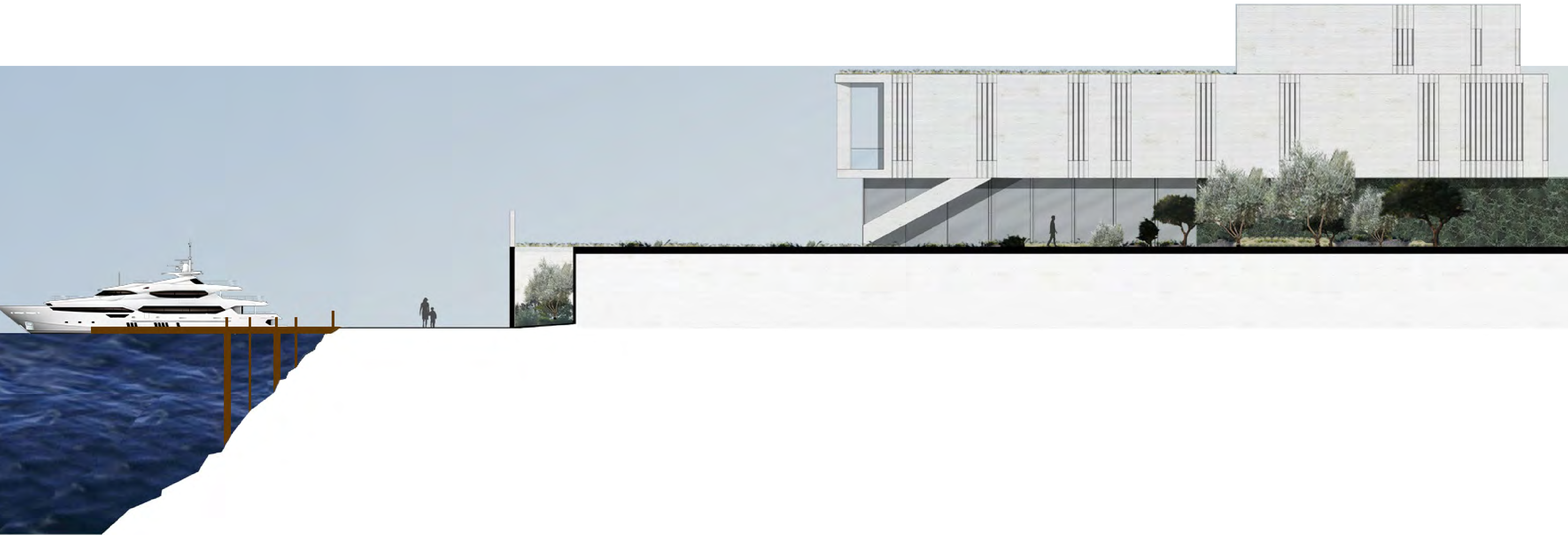
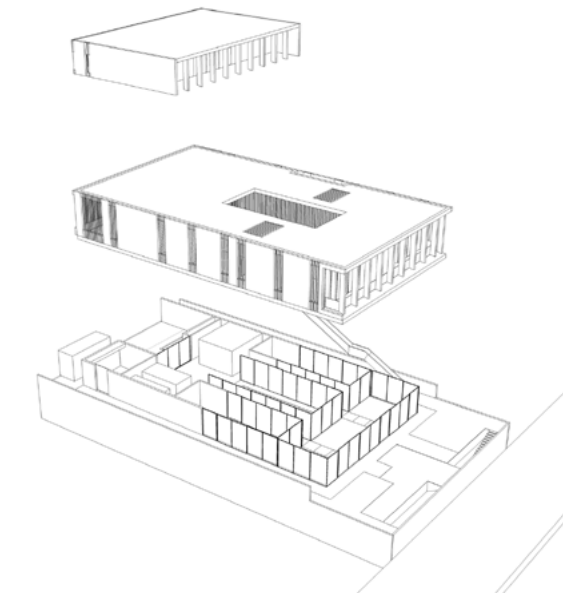


THE EAST FACADE

The architectural design provides various private and communal spaces throughout The Mansion.

The project is divided into four different main spaces:

- The basement level (B) includes a terrace, family living area, gym, spa, cinema, and parking garage.
- The patio level (GF) holds the main living/reception spaces and the pool.
- The family level (1st) allows for complete privacy, including six ensuite bedrooms
- The top level (2nd) hosts the primary bedroom and a rooftop terrace with panoramic views overlooking the creekside.





This drawing is an artistic interpretation of the design. It is not meant to be an exact rendition. Some items may not be standard and/or represent an exact symbol. Exact grading may differ.



Landscape Concept

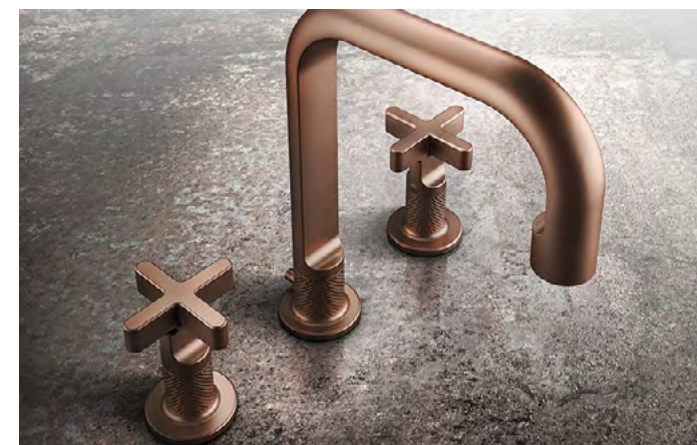
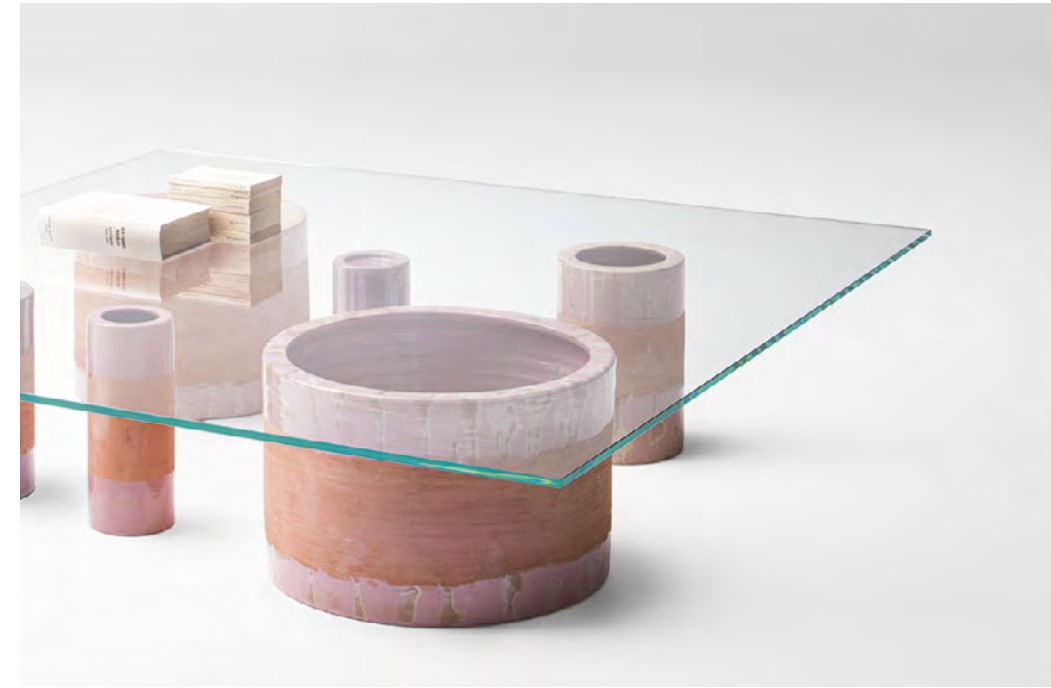
MOODBOARD





The Interior

SELECTION





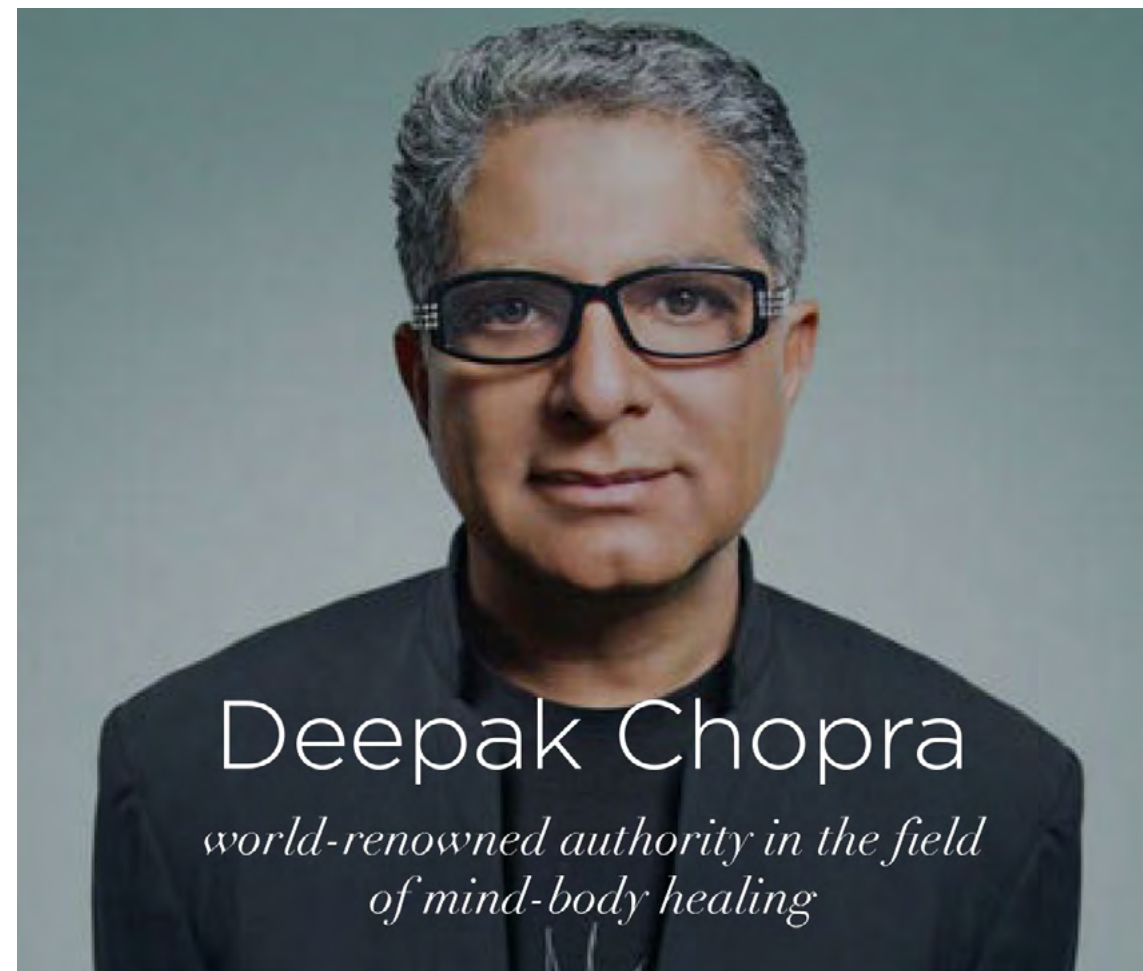
The Earth Patio

MOODBOARD





Residential Wellness Design



DELOS WELLNESS SOLUTIONS

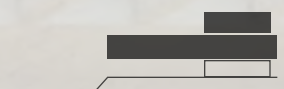
Every aspect of The Residences interior environment designed in collaboration with Wellness Real Estate pioneer Delos, has been re engineered to enhance resident's health and well-being, including water filtration and air purification.

Each of The Residences' interior features fully integrated wellness solutions by Delos designed to harmonise the systems of the body with those of the home by bringing in precisely what the body needs and filtering out elements that may harm it, helping improve the quality of air, water, and overall well-being.



"Delos is designing spaces to solve health problems before they're created...It will literally change the way we live."

FORMER PRESIDENT BILL CLINTON
Clinton Global Initiative, 2014



WAKE

Inspired by nature's sunrise, dynamic lighting wakes you gradually and leaves you feeling refreshed.



Enjoy filtered water from the Water Purification system.



NOURISH

Dynamic Lighting mimics natural sunlight throughout the day to balance your body's sleep-wake cycle.



SLEEP

Sleep quality is essential for overall health. Delos' solutions are designed to help enhance energy, sleep, and well-being.



Delos wellness solutions help to optimize every aspect of your day. Healthier indoor environments can help to improve energy levels.

ENERGIZE



Throughout the day, the Air Purification system reduces allergens, toxins and smoke.



Take a moment for mindfulness. Focused mental health and wellness support is no longer a luxury—it's a necessity.

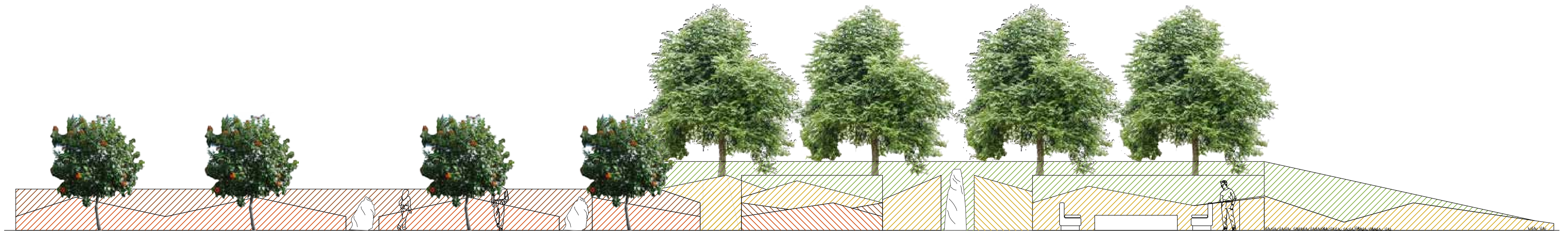
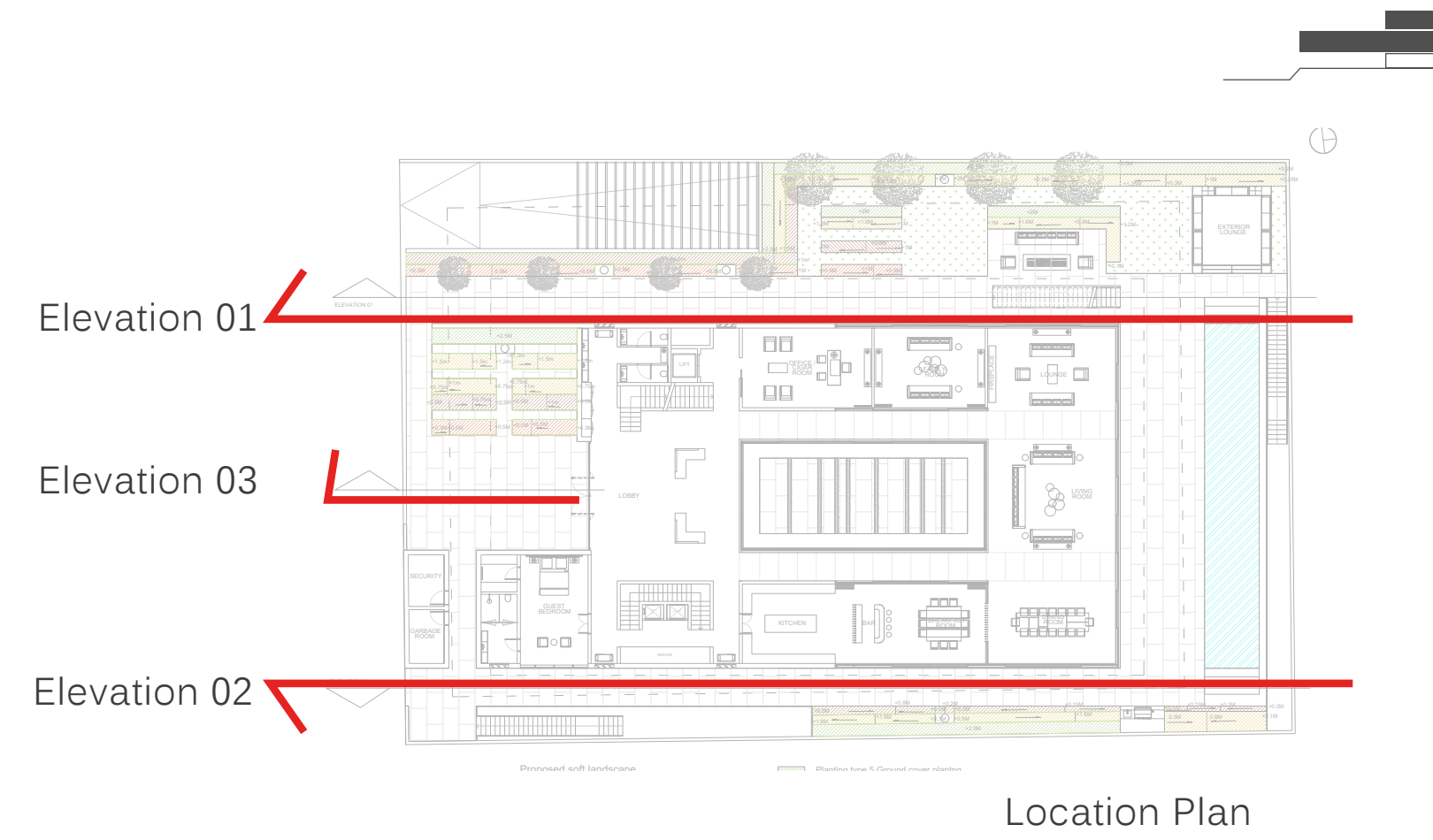
RELAX





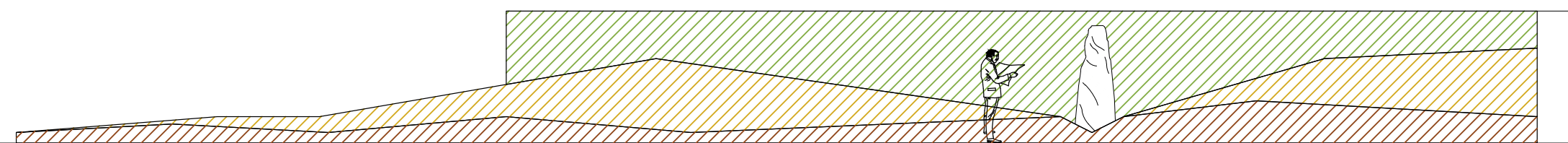
This drawing is an artistic interpretation of the design. It is not meant to be an exact rendition. Some items may not be standard and/or represent an exact symbol. Exact grading may differ.

Landscape Concept

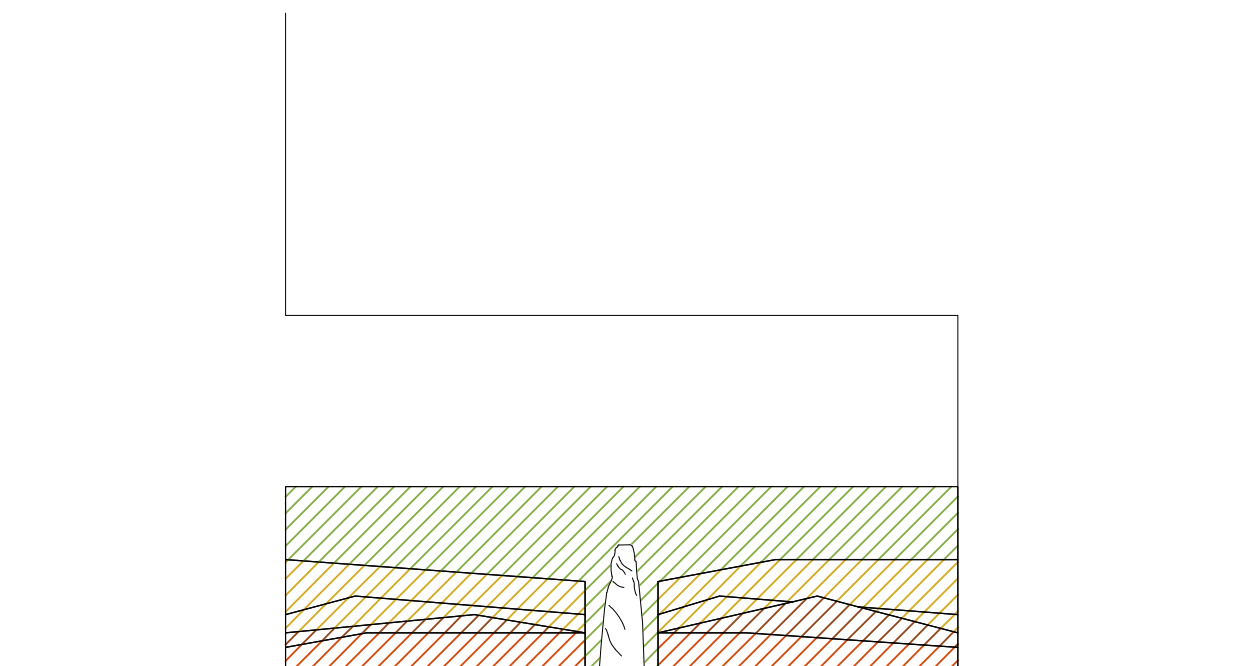


Elevation 01

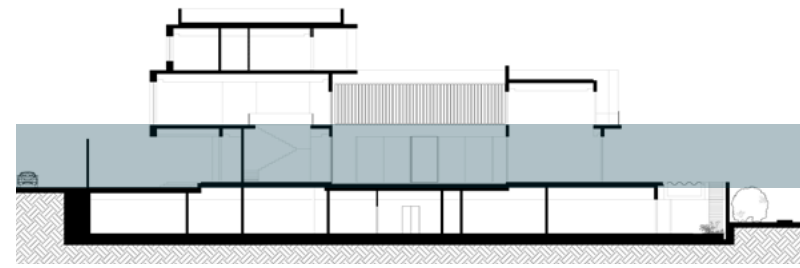
Elevation 02



Elevation 03



Ground Floor

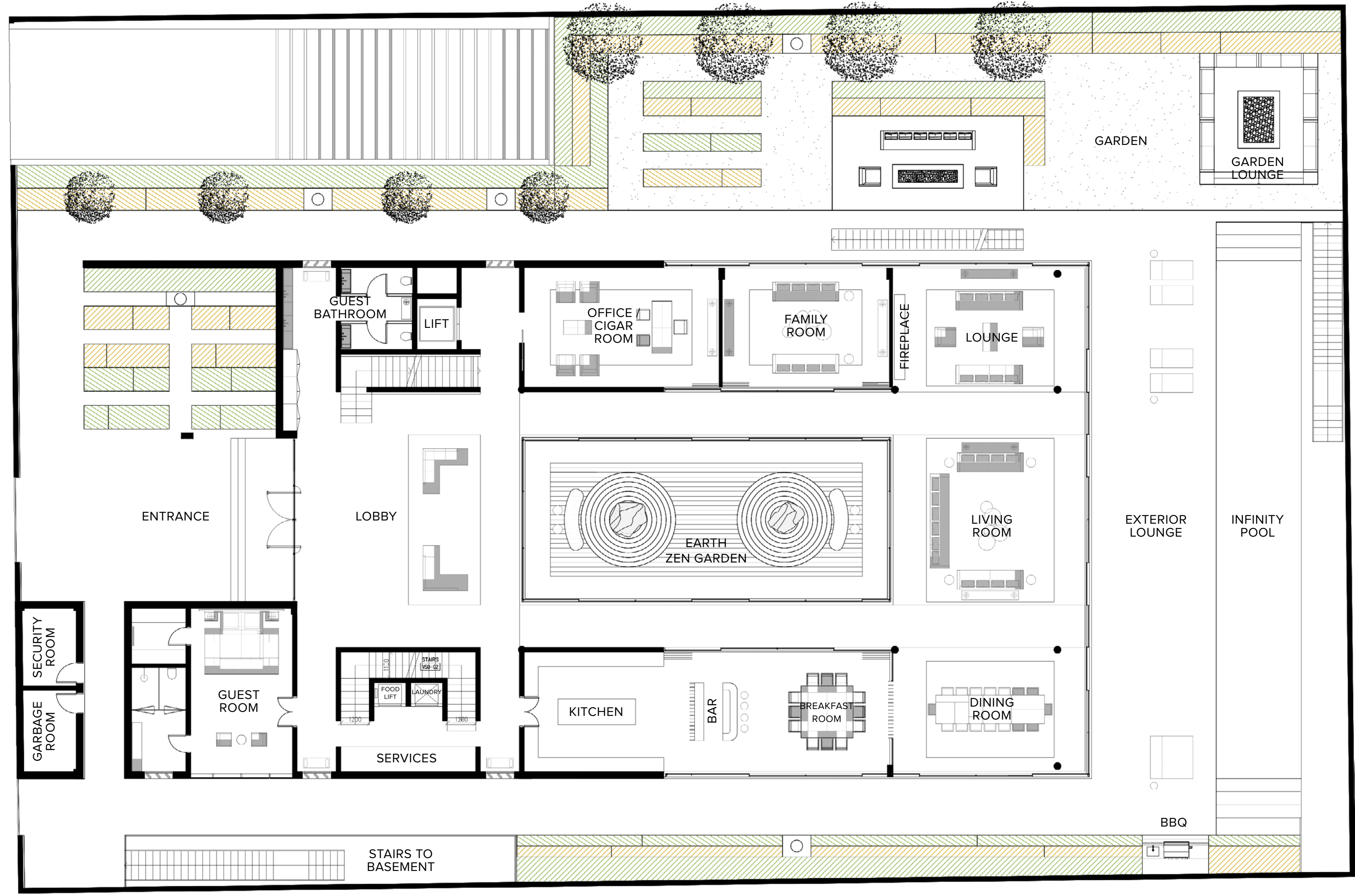


INTERIOR	684.69 SQ.M / 7,369.93 SQ.FT
EXTERIOR	204.32 SQ.M / 2,199.28 SQ.FT
SERVICES	21.37 SQ.M / 230.02 SQ.FT
TOTAL AREA	910.38 SQ.M / 9,799.24 SQ.FT

PARKING ACCESS

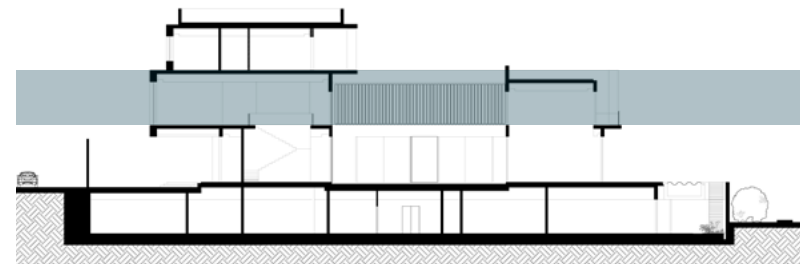


DELIVERY / SERVICE ACCESS

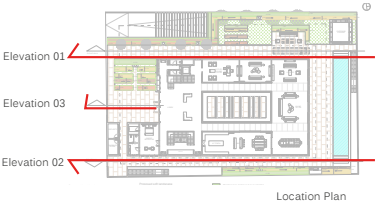
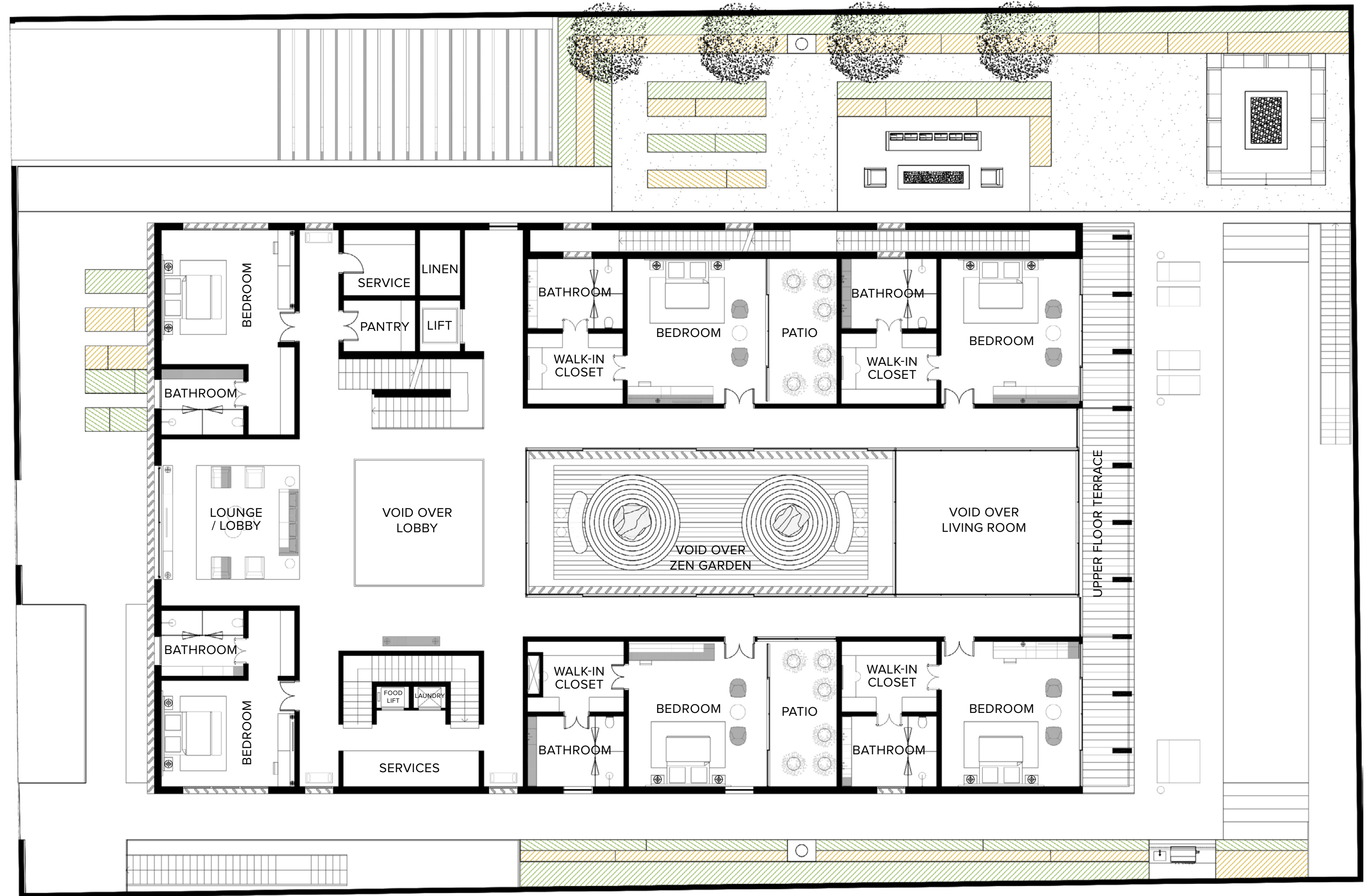


WILD SANCTUARY VIEW

First Floor

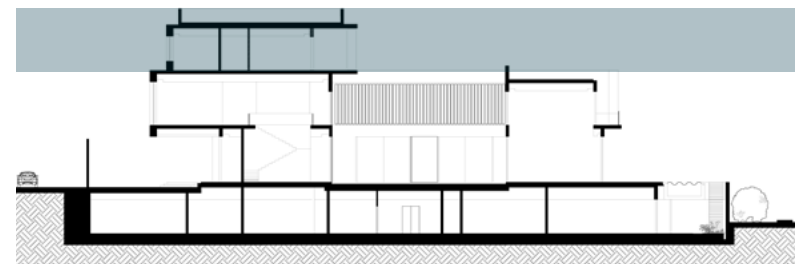


INTERIOR	682.76 SQ.M / 7,349.16 SQ.FT
EXTERIOR	51.94 SQ.M / 559.08 SQ.FT
SERVICES	6.12 SQ.M / 65.88 SQ.FT
TOTAL AREA	740.82 SQ.M / 7,974.11 SQ.FT

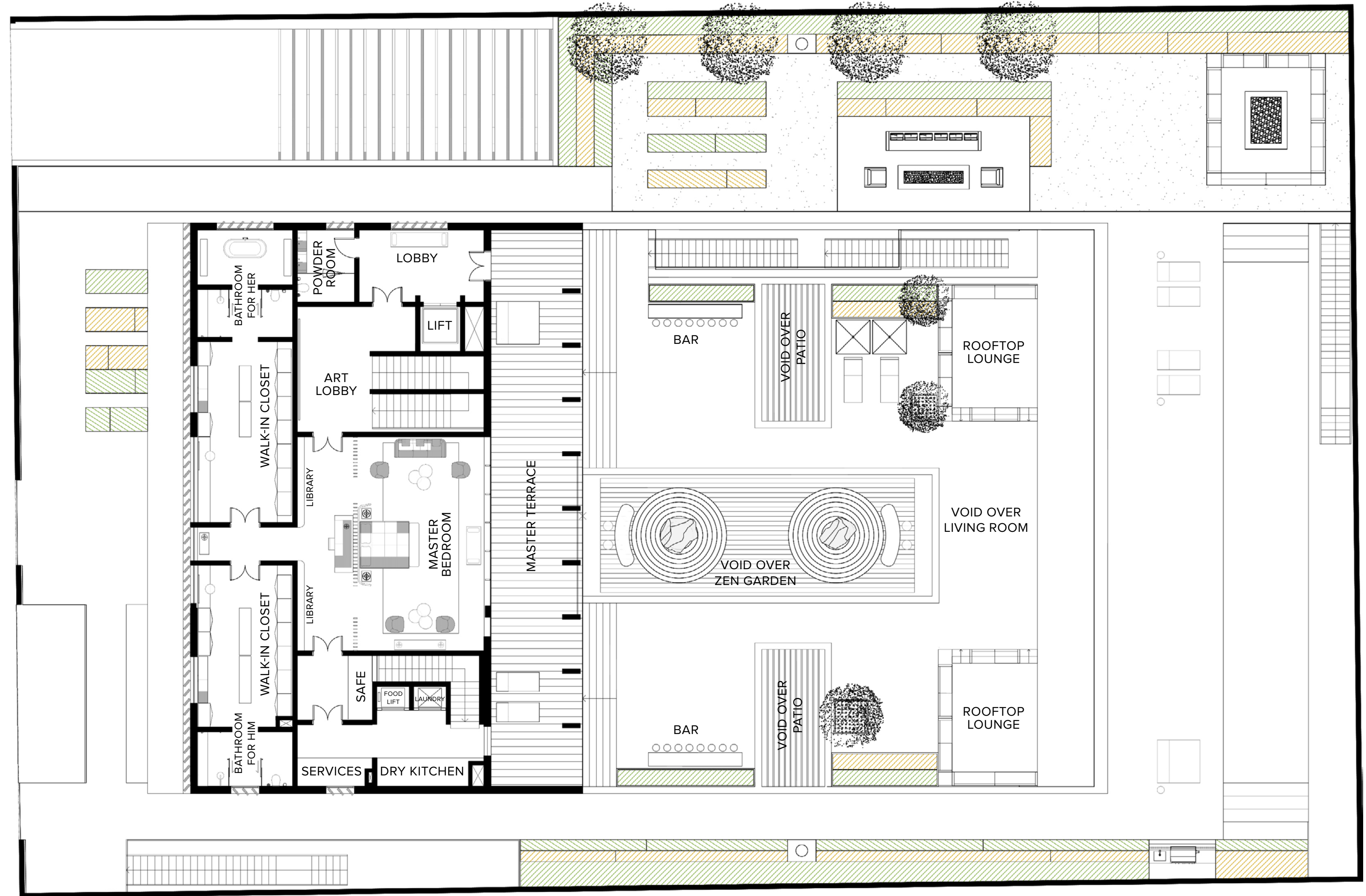
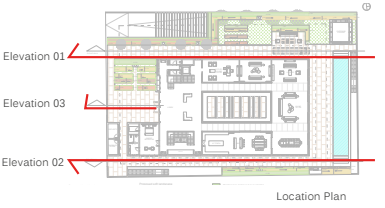


WILD SANCTUARY VIEW

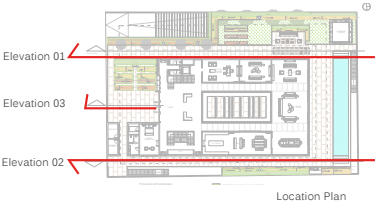
Second Floor



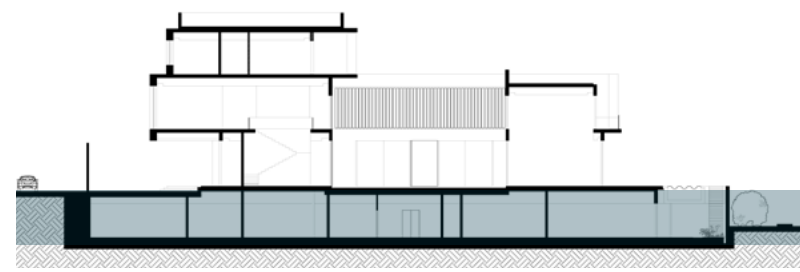
INTERIOR	299.75 SQ.M / 3,226.48 SQ.FT
EXTERIOR	92.42 SQ.M / 994.80 SQ.FT
TOTAL AREA	392.17 SQ.M / 4,221.28 SQ.FT
SKY GARDEN	348.65 SQ.M / 3,752.83 SQ.FT



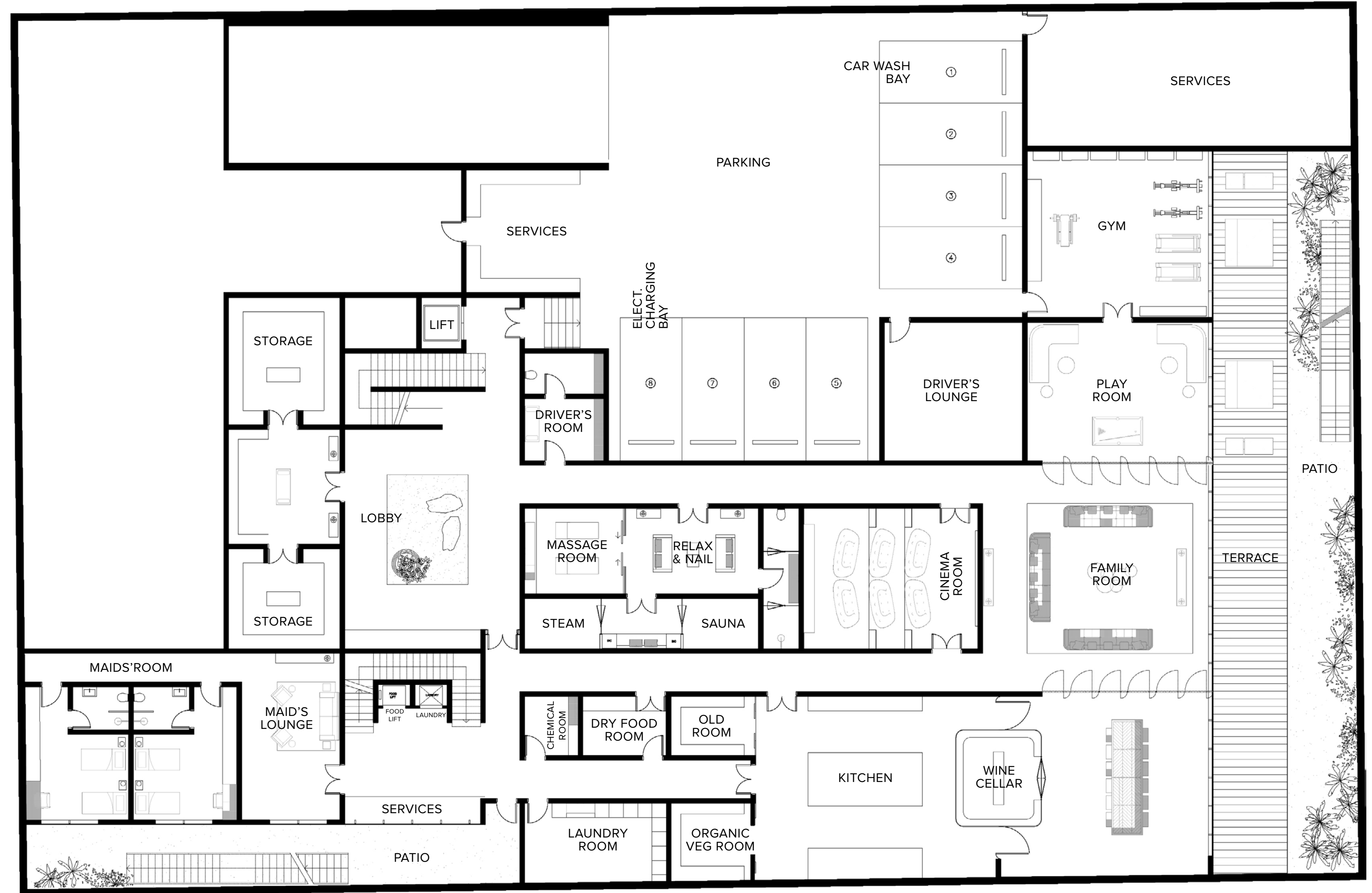
WILD SANCTUARY VIEW



Basement



INTERIOR	1,007.47 SQ.M / 10,844.31 SQ.FT
EXTERIOR	157.77 SQ.M / 1,698.22 SQ.FT
SERVICES	733.53 SQ.M / 7,895.64 SQ.FT
TOTAL AREA	1,898.77 SQ.M / 20,438.17 SQ.FT



WILD SANCTUARY VIEW

By The Numbers

PLOT

PLOT AREA	2,217.56 - 2,318.12 SQ.M / 23,869.59 - 24,952.01 SQ.FT
PLOT NO.	1 4 7 10
NO. OF UNITS	4
NO. OF LEVELS	GROUND + 2 FLOORS & BASEMENT
HEIGHT	14.80 m ROOF SLAB
LAYOUT	8 BEDROOMS + MAJILIS + 2 MAIDS' ROOMS + DRIVER ROOM + 12 BATHROOMS

MANSION

BUA

GROUND FLOOR	910.38 SQ.M / 9,799.20 SQ.FT
FIRST FLOOR	740.82 SQ.M / 7,974.04 SQ.FT
SECOND FLOOR	392.17 SQ.M / 4,221.26 SQ.FT
BASEMENT	1,898.77 SQ.M / 20,438.13 SQ.FT

TOTAL

3,942.13 SQ.M / 42,432.68 SQ.FT



Fabric

- Romo
- Casamance
- Rubelli
- Sahco
- Dedar
- Lelievre
- Pierre Frey

Aluminum

- Reynaers
- Gutmann
- Schueco
- Vitrocsa

Wardrobe

- Poliform
- Molteni
- Rimadesio
- Tisettanta

Indoor Furniture

- Giorgetti
- Molteni
- Poliform
- Flexform
- Minotti
- B&B Italia
- Maxalto
- Gubi
- Meridiani
- Cassina
- Ceccotti Collezioni
- Henge
- Porada
- Galloti & Radice
- Baxter Furniture

Outdoor Furniture

- Paola Lenti
- Varaschin
- Kettal
- Dedon
- Tribù
- Gervasoni
- Cassina

Decorative Lighting

- Baroncelli
- CTO Lighting
- Terzani
- Artemide
- Fontana Arte
- Barovier & Toso
- Foscari
- Studio Italia Design
- Penta
- Patrizia Garganti
- DelightFULL
- Andromeda International
- Jean-Michel Othoniel
- Viabizzuno
- Frederik Molenschot

Non-Decorative Lighting

- Viabizzuno
- Iguzzini
- Erco
- Delta Light
- Tragetti

Kitchen

- Poliform
- Dada
- Poggenpohl
- Effeti
- Ernestomeda
- Gullo Luxury Kitchen
- Rossana Kitchen

Kitchen Equipment

- Gaggenau
- Miele Professional
- Sub-zero & Wolf

Sanitary Ware

- Gessi
- Ritmonio
- Zucchetti
- Agape
- Antonio Lupi
- Ceramica Flaminia

Amenities And Facilities

- Luxury Wellness Hotel
- Private Boat Dock For Up To 120ft. Yachts
- Eight Sustainable and Organic-Focused Retail Spaces, Including Weekend Farmers' Market
- 24/7 Secured Private Parking with Valet
- Gated Community with Unique Views on the Wildlife Sanctuary
- Beach Access to The Ritz-Carlton Jumeirah Hotel
- Unique Access to One of Dubai's Most Recognized Private School: Swiss International Scientific School

- Wellness Center
Rejuvenation and Detox Facilities
Full Floor of Fitness Gear
Multiple Yoga Rooms
Indoor Pools

- Members' Only Resort Clubhouse
Over Three Michelin-Star Fusion,
& Healthy-Cuisine Restaurants

- The Residences Indoor & Outdoor
Business Club Facilities
Members' Only Welcoming Lounge Area
Breakfast & All-Day Dining Restaurant
Health Bar
Board Room / Meeting Room
Event / Party Hall
Cinema / Media / Games Room
Indoor Pools

- The Residences Indoor & Outdoor Kids Club
Multi-Purpose Rooms: Party, Classroom, Yoga,...
Technology Rooms: Science, Coding,...
Play Zones: Lego, Climbing, Baby Play
Kitchen For Cooking Classes
Organic Plants Garden

- Residential Neighborhood Park
Adults Residential Pool, and its Deck
Kids Large Outdoor Park & Splash Pool
Yoga Platform

Residential Services

Included In Your Service Charges

- Move-In Coordination
- Concierge Service
- Butler/Doorman/Porter Services
- Valet Parking 24/7 in Exclusive Basement Parking for Residents & Visitors
- Airline / Private Air Reservations
- Airport / Ground Transportation Arrangements
- Automobile Rental Reservations
- Limousine Reservations, incl. Rolls-Royce
- Business Center Services
- Coordinate Delivery Services
- Hotel Reservations
- Reserving Golf Tee Times
- Theater & Entertainment Information
- Ordering Floral Arrangements
- City Activity Arrangements
- Common Area Housekeeping
- Loss Prevention



**THE RITZ-CARLTON
RESIDENCES**

DUBAI, CREEKSIDE

À La Carte Services

General

- Pre-arrival Grocery Shopping
- Laundry/Dry Cleaning
- Alterations Services
- Car Washing/Detailing
- Equipment Rental & Arrangements
- Secretarial Services
- Function/Event Planning
- Mail Packing & Shipping
- Plant Care Maintenance
- Translation Services
- Nanny/Child Care Services
- Pet Grooming
- Vacant Home Care Inspections
- Owner Absentee Program
- Sommelier
- Notary Public Service

Academics

- Swiss International Scientific School
Bilingual, Private Boarding School
Exclusive Scholarship
Preferential Rate
Guaranteed Entry for your children

Lifestyle

- Exclusive Access to Resort Exotic Car Fleet
- Exclusive Access to Resort Private Yachts
- Preferential Rate on Resort Hotel Stays for your guests
- Michelin-Star Fine Dining
- Healthy-Cuisine Restaurants
- In-Residence Dining and Catering by the Chef himself

Engineering And Housekeeping

- Day-to-Day Maintenance Coordination by The Ritz-Carlton
- Furniture Assembly
 - Bulk/Move-in Trash Removal
 - Picture Hanging
 - Minor Electrical & Plumbing
 - HVAC Filter Vacuum & Mop Floors
 - Dust Interior
 - Strip Beds & Change Sheets
 - Clean Patio

The Concierge and Management staff can assist you with the services listed on this page. Please note that some of these services are À La Carte Services and performed by third parties. Conditions and charges apply to À La Carte Services.

Collaborations & Experiences

OWNER AND DEVELOPER



MAG of Life, the Wellness Real Estate division of MAG Group and driving force behind the KETURAH Resort. With current project estimates of over US\$ 1 billion, the company focuses on developing and delivering high-quality projects that provide long-term benefits to both investors and customers. MAG of Life, spearheads the MAG Group's drive to the forefront of the real estate industry thanks to projects imbued with the company's philosophy of innovation and continuous improvement.

MAG of Life has always been inspired by the art of living well. Talal M. Al Gaddah, the founder and visionary behind the company has created a sanctuary of wellness and luxury, not in some far away sacred retreat, but rather in the city, and even closer, in your home where you can be nourished every day.

PROPERTY MANAGEMENT

THE RITZ-CARLTON

The Ritz-Carlton has always been a name synonymous with distinction that continues to redefine luxury, through an incomparable commitment to the finest personal services and devotion to the standards that have made them the top luxury brand in the world. Residence owners enjoy the same Legendary services as The Ritz-Carlton hotel guests and the added value of a dedicated Residence staff and private, owners-only amenities.

OUR COMMITMENT

Our primary focus is health, wellness and happiness since without it; one cannot enjoy the richness of life and vitality. As part of the innovative program, specific wellness features and technologies focus on what you breathe, what you see, what you consume and how you feel, to create an environment that is uniquely yours, yet optimised for health and wellbeing. This combined with a mindful approach to crafted quality of design and construction in pursuit of excellence only seen before in private palaces.

THE ARCHITECT

“La Vie en Rose”

Amar Sabeh's art of living well

Acclaimed French designer, curator and architect Amar Sabeh renowned for his creativity is a master of interpreting luxury in unique ways and has been instrumental in achieving the vision and completion of The Ritz Carlton Residences, Dubai, Creekside.

For The Residences, he has translated this spectacular space into breath-taking interiors and seamless design and wellness features that are still effortlessly human. Here, nature does not end, inside or out. The architecture and interior design of The Residences exude timeless modernity based on grand, elegant and light-filled spaces complimented by bespoke customized designer furniture.

HEALTH & WELLNESS



Delos™ helps create spaces that actively contribute to human health, performance and well-being by marrying the best innovations in technology, health, science, and real estate. Combining the vision and philosophies of its parent companies, MAG of Life aims to provide Dubai a platform to improve human health and wellbeing by creating buildings that are developed with people's health and wellness at the centre of their design, supported by programming, aesthetics, consultation, research, and an array of innovative solutions and technologies.

Spaces that promote health, performance and wellbeing

THE CONTRACTOR



DCC is a leading turnkey construction company building world-class luxury residential, commercial, mixed-use, hospitality and leisure complexes. Established in Dubai in 1962 and specialized in high-quality construction.

DCC has raised the bar in construction expertise and excellence in the Middle East. For decades, discerning developers and leading architects have turned to DCC to help bring their visions to life and environments into vehicles for health, wellbeing, performance, and resilience.



THE RITZ-CARLTON RESIDENCES

DUBAI, CREEKSIDE

The Ritz-Carlton Residences, Dubai, Creekside are not owned, developed or sold by The Ritz-Carlton Hotel Company, L.L.C. or its affiliates ("Ritz-Carlton"). MAG of Life FZ-LLC uses The Ritz-Carlton marks under a license from Ritz-Carlton, which has not confirmed the accuracy of any of the statements or representations made herein.