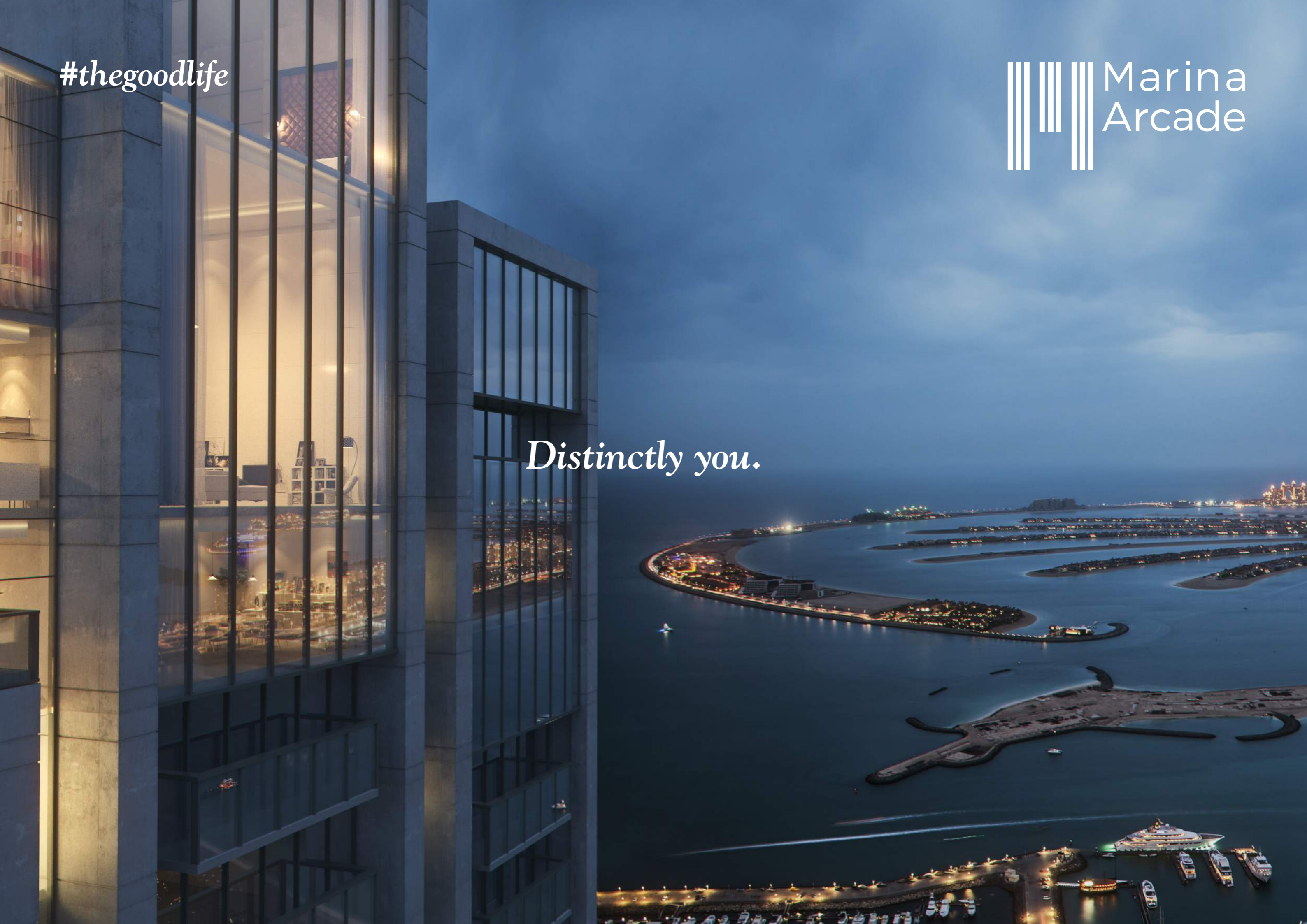


#thegoodlife

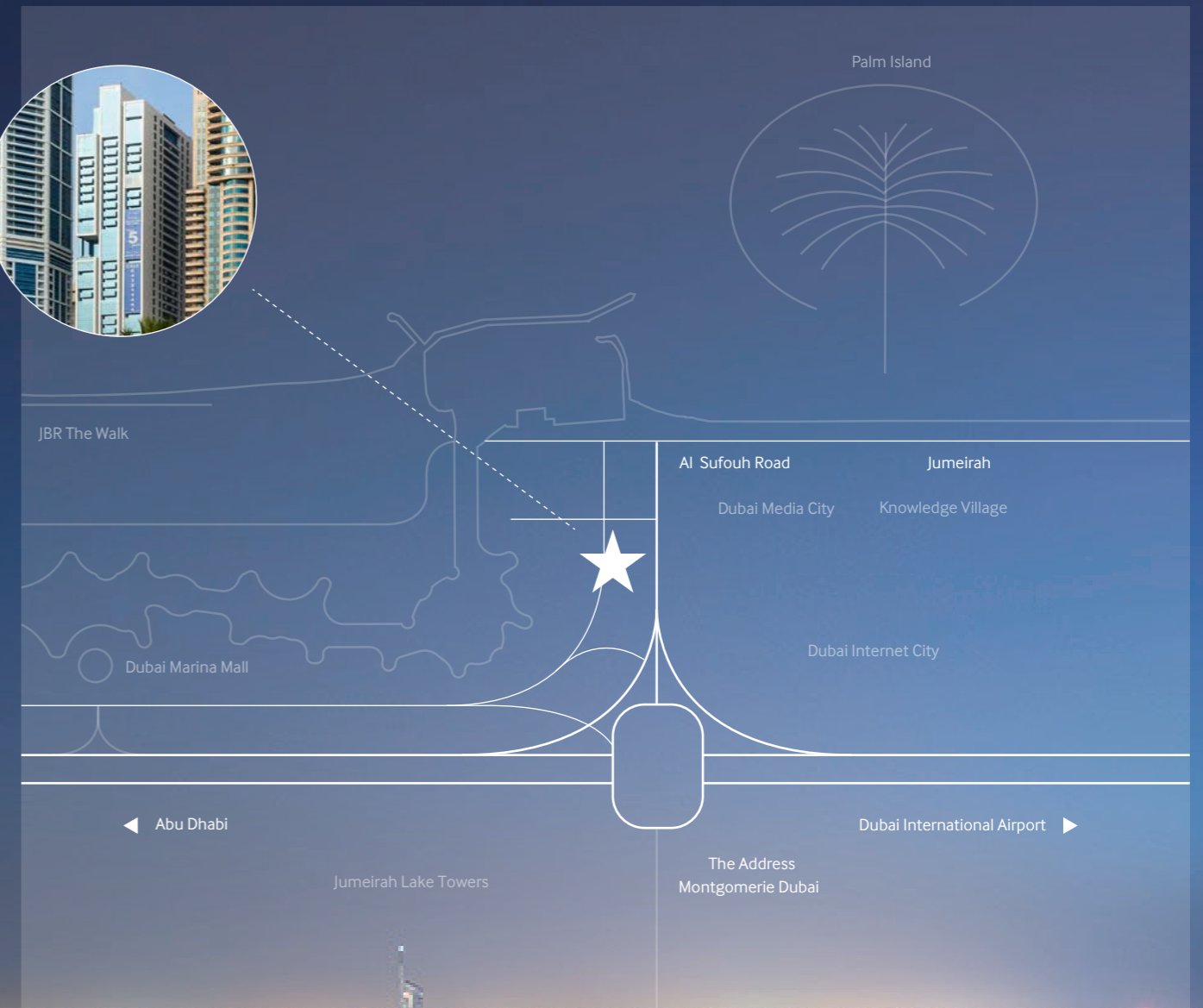
Marina
Arcade

Distinctly you.



Connections that take you places.

On the edge of Dubai Marina and bordering Dubai Media City, effortlessly commute by car, metro or tram, avoiding all the congestion.



Just across the way from that *sunset round.*

Whether it's a round of golf across the road, dinner in
Downtown or a flight to Rome, you're always quickly
connected.



It's the Marina life, and we're
raising the bar.

Marina Arcade is crowned with top-tier, 24-hour
concierge and valet services, leaving you more free
time to live the good life.



Escape to sun, sea
and sand.

Just a short commute to the Burj Al Arab or a walk to
some of the most idyllic beaches in the world.



Exhilarating activities

From sky diving to hot air ballooning, beach volleyball to stand-up paddle boarding - if you love being outdoors, there's no better place to be.



Where the *city never sleeps*.

Step out into the hustle of life, hipster cafés, al fresco bistros and vibrant late night spots. Enjoy shopping inspiration from luxury goods to quirky finds, extensive malls to inspiring local boutiques.



Stellar stays, Michelin dining.

Marina Arcade puts the city's most sought-after society lounges and restaurants on your doorstep.



Designer beginnings for
flawless finishes.

Experience Milanese flair at Marina Arcade through multi award-winning Italian interior designer Matteo Nunziati's attention to details.





Honing *perfection.*

Marina Arcade completes the millennial lifestyle with wellness spaces that includes a 6000 square foot fitness centre - the largest in the Marina.

Poolside *pleasures.*

It's what you should be accustomed to.



Perfectly placed.

Large, open interiors allow for ceiling to floor glazing, for an ambience of relaxation and wellbeing.



1 Bedroom residences -
Brighter living.



2 Bedroom residences -
Inspiring families.



2 Bedroom residences -

Type 2A

Seef View
1,155 sq ft



Type 2C

Palm Jumeirah, Marina 23 and Al Seef Views
1,600 sq ft



3 Bedroom residences - Design matters.



3 Bedroom residences -

Type 3D

Al Seef View
2,089 sq ft



Type 3F

The Palm Jumeirah & Al Seef View
2,460 sq ft



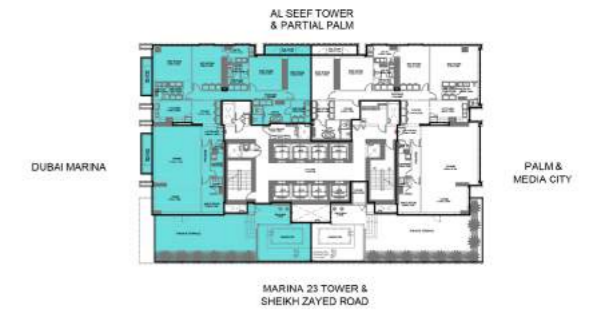
4 Bedroom residences - *Ultimate waterfront living.*



4 Bedroom residences-

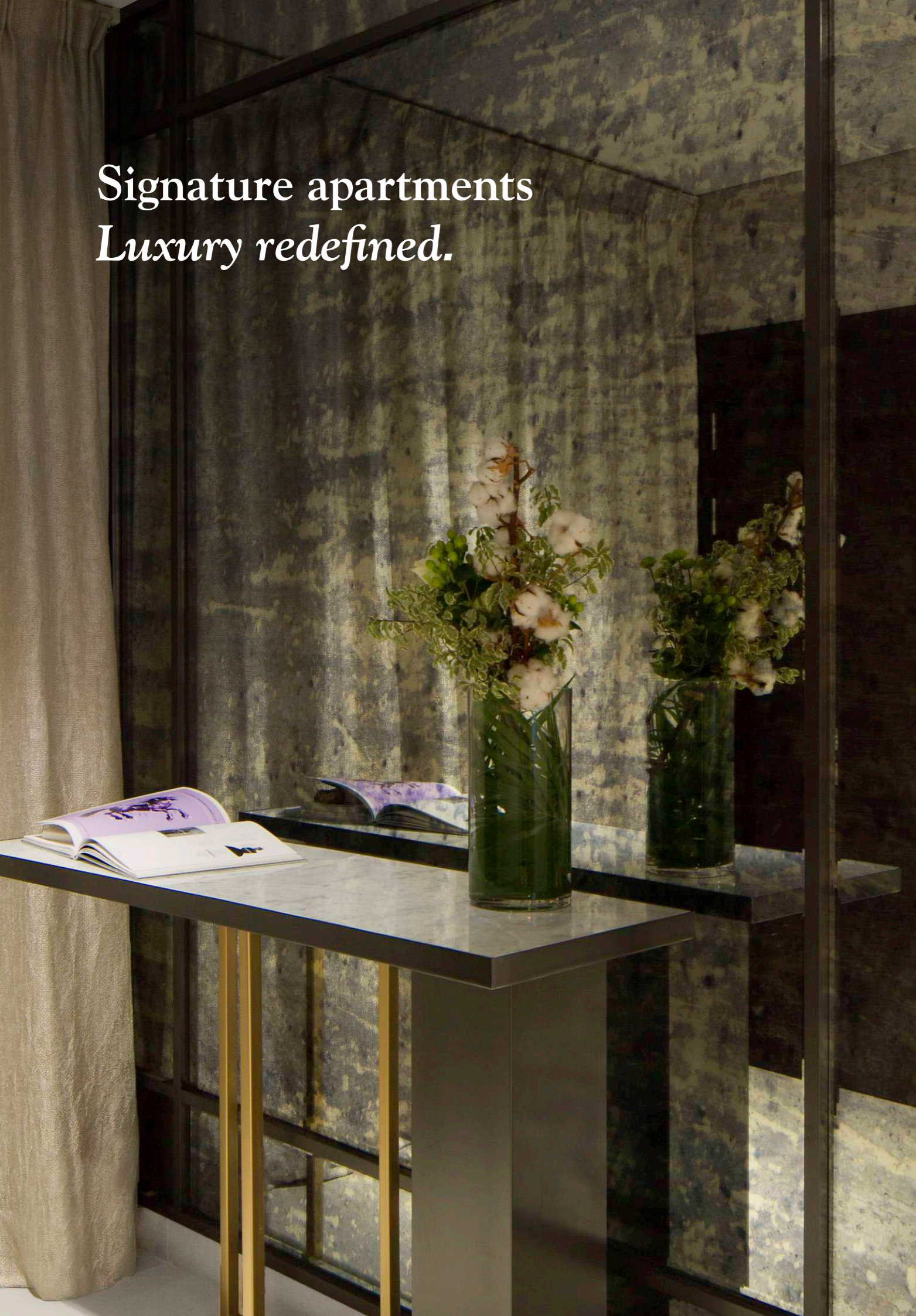
Type 4A

Palm Jumeirah, Marina 23 & Al Seef Views
5,467 sq ft



Signature apartments

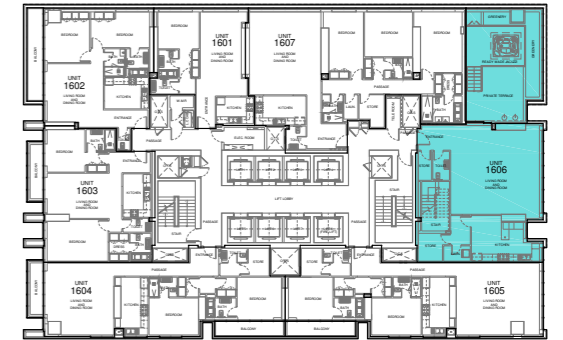
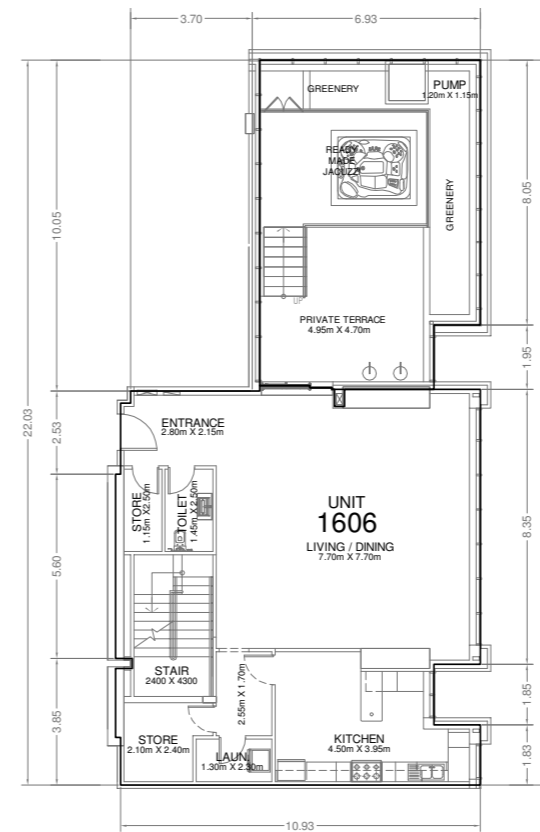
Luxury redefined.



Signature apartments -

Type -

Palm & Media City, Al Seef Tower & partial Palm
3,466.19 sq ft



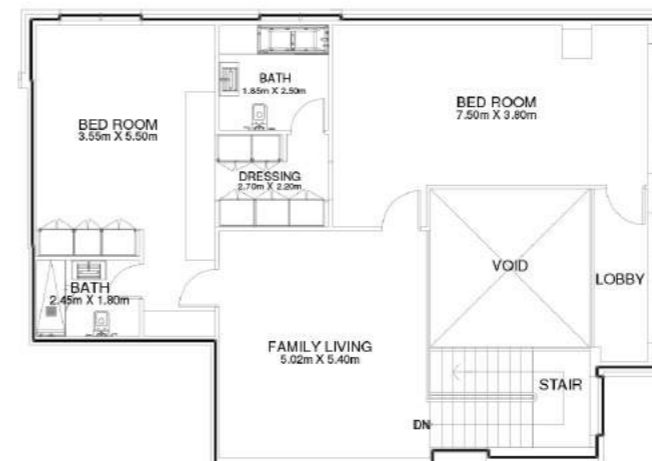
Duplex apartments -
Five stars apart.



Duplex apartments

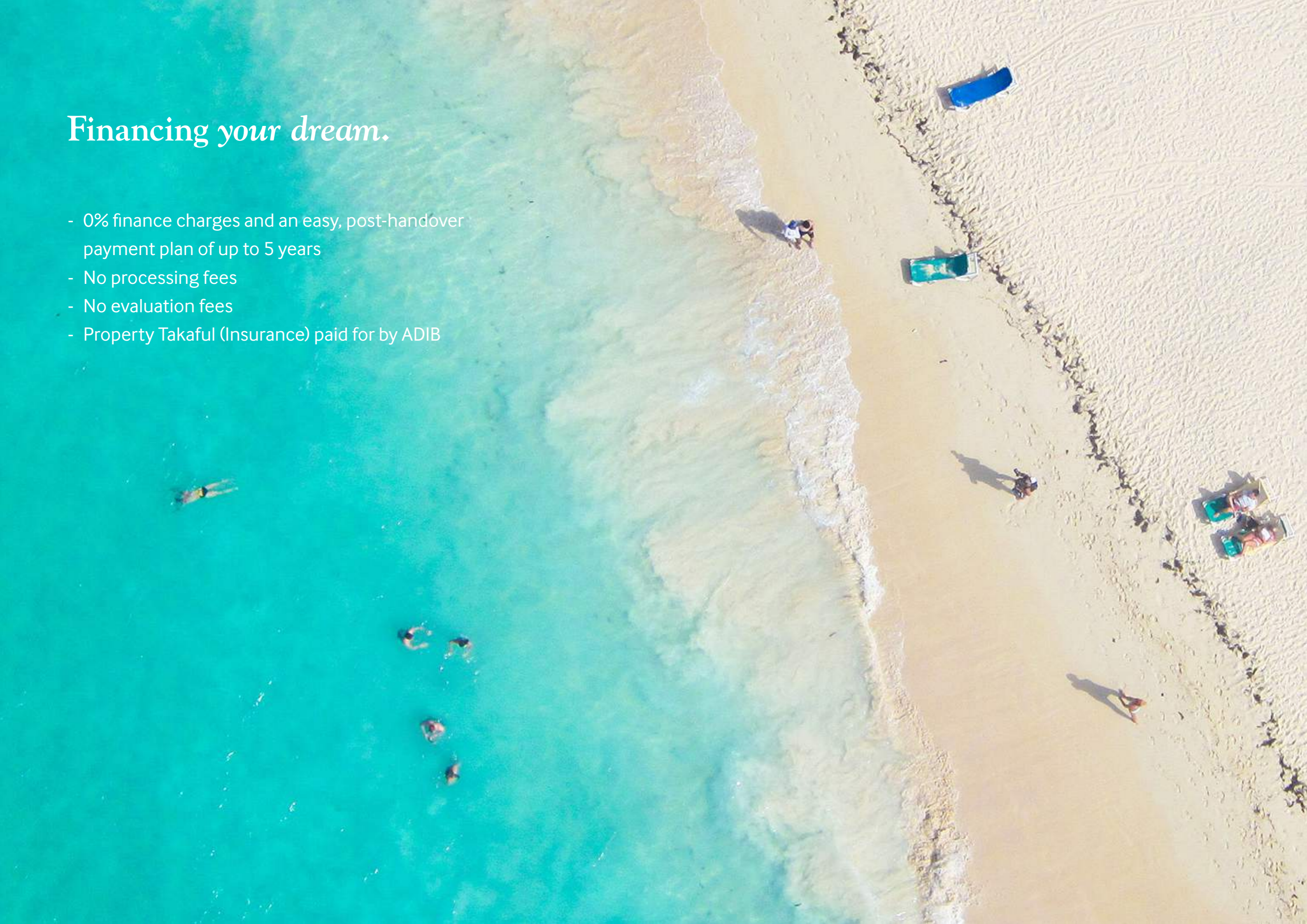
Type - 3G

Al Seef, partial Palm and Media City Views
3023 sq ft



Financing *your dream.*

- 0% finance charges and an easy, post-handover payment plan of up to 5 years
- No processing fees
- No evaluation fees
- Property Takaful (Insurance) paid for by ADIB



#thegoodlife

marketing@marinaarcade.com

+971 4 32 11 444

marinaarcade.com

  /marinaarcade