

DAMAC
BAY
BY CAVALLI

LIFE COMES TO A HOLD

THERE IS ONLY THE SEA

FOR THE POWER OF ITS SONG

HAS TAKEN HOLD OF ME



THE MORNING
BREEZE IS A
HERALD,
A MESSENGER
FROM THE SEA.
IT WHISPERS
IN MY EAR
TELLING ME
TO BE FREE.



THE WAVES
SING TO ME,
CALLING ME
TO THE
SOFT SAND.
THE WATER
SWEEPS OVER
MY FEET,
SURROUNDING
ME WHERE
I STAND.



THE SONG OF THE SEA

The sound of the waves.
The blowing of a sea breeze.
The chirping of seabirds.
All of these come together
at DAMAC Bay to form a
mesmerising song of the sea.
The captivating melody invites
you to its very shores, and you
soon find yourself seamlessly in
rhythm with it.



DAMAC

دamac

D

DAMAC

WESTIN

DAMAC BAY BY CAVALLI

7'BA-4-33-10

DAMAC BAY BY CAVALLI

A TREASURE, RISING FROM THE DEEP

DAMAC Bay by Cavalli is a magnificent 42-storey development that blurs the line between true luxury and maritime bliss. With sleek exteriors and nautical-themed interiors by the iconic fashion brand Cavalli, DAMAC Bay comes with a treasure chest full of amenities and attractions, each more unique and extravagant than the other.

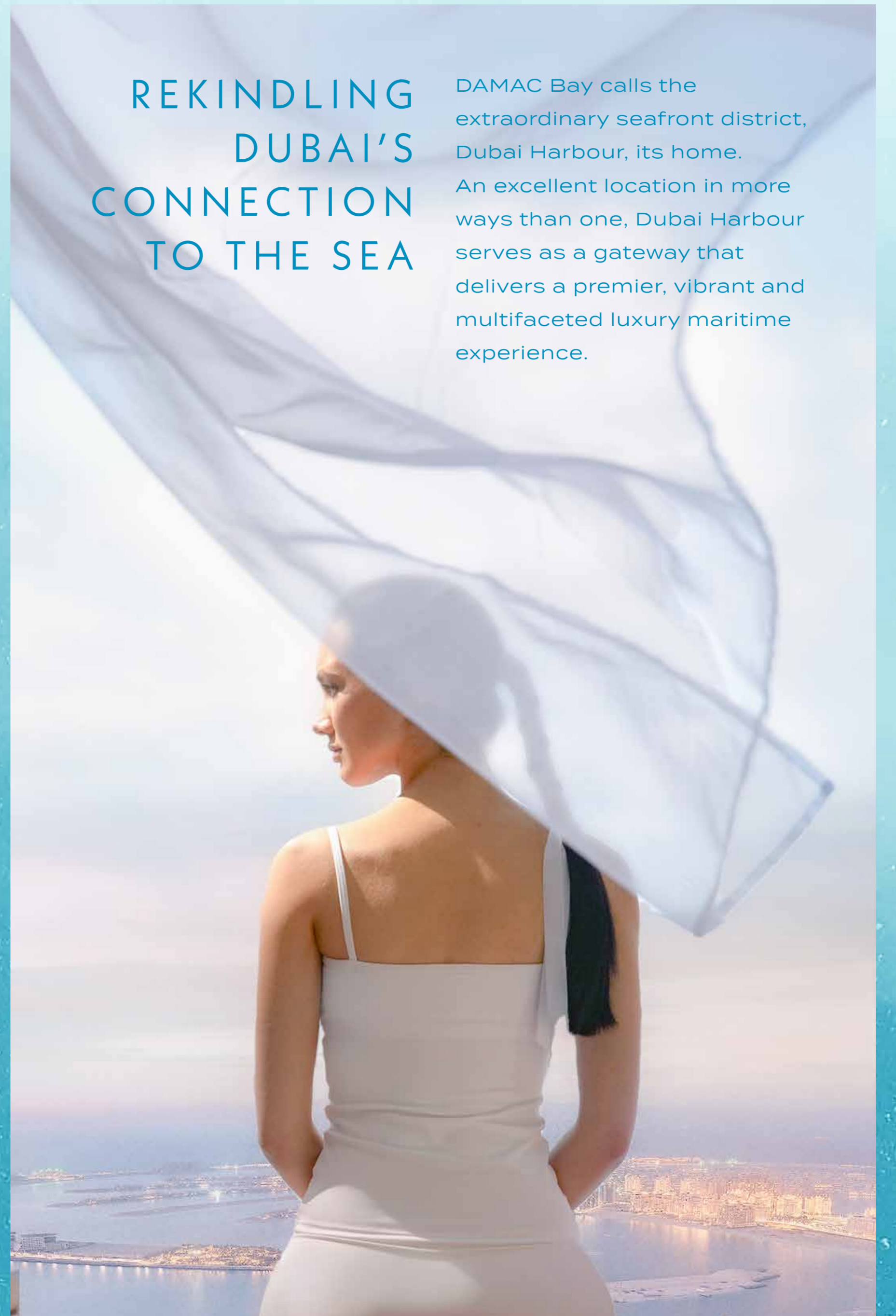




DAMAC
BAY
BY CAVALLI

REKINDLING DUBAI'S CONNECTION TO THE SEA

DAMAC Bay calls the extraordinary seafront district, Dubai Harbour, its home. An excellent location in more ways than one, Dubai Harbour serves as a gateway that delivers a premier, vibrant and multifaceted luxury maritime experience.



DAMAC
BAY
BY CAVALLI





THE ESSENCE OF AN UNTAMED OCEAN

Cavalli is a fashion brand known the world over for its iconic nature-inspired fashion pieces. It brings this wild creativity to DAMAC Bay, trading the leopard and tiger prints for sea shells, pearls and zebrafish-inspired patterns.

cavalli

THE SUN, THE SKY, THE SEA AND YOU

DAMAC Bay offers a seaside lifestyle like no other, because of one very unique feature.

The towers have been carefully crafted in such a way that each and every unit will enjoy sea views, regardless of where they face.

The sleek exteriors mimic the ocean's waves, and at the crest, is a Cavalli-inspired bridge that coils around the towers like a sea serpent.



An aerial view of a luxury resort. The main feature is a large, winding infinity pool with a white, wavy architectural structure along its edge. The pool is surrounded by wooden decks with lounge chairs and palm trees. To the right, there is a private beach with white sand and turquoise water. The resort building is modern with a white, wavy facade. The sky is blue with some clouds, and several palm trees are visible on the left side of the image.

A BEACH AT YOUR DOORSTEP

Few things say luxury like having an exquisite private beach created just for you. Saunter along the soft sand, stopping only to grab a quick bite at one of the many F&B offerings. Or swap the sand for velvet and leather, and pamper yourself at the lavish Cavalli Lounge.

FIND JOY IN THE CLOUDS

High up in the roof lie even more spectacular amenities. Take in a deep breath, and an astonishing vista, from the three infinity pools, one on each tower. Then turn work into pleasure while onboard floating workstations.



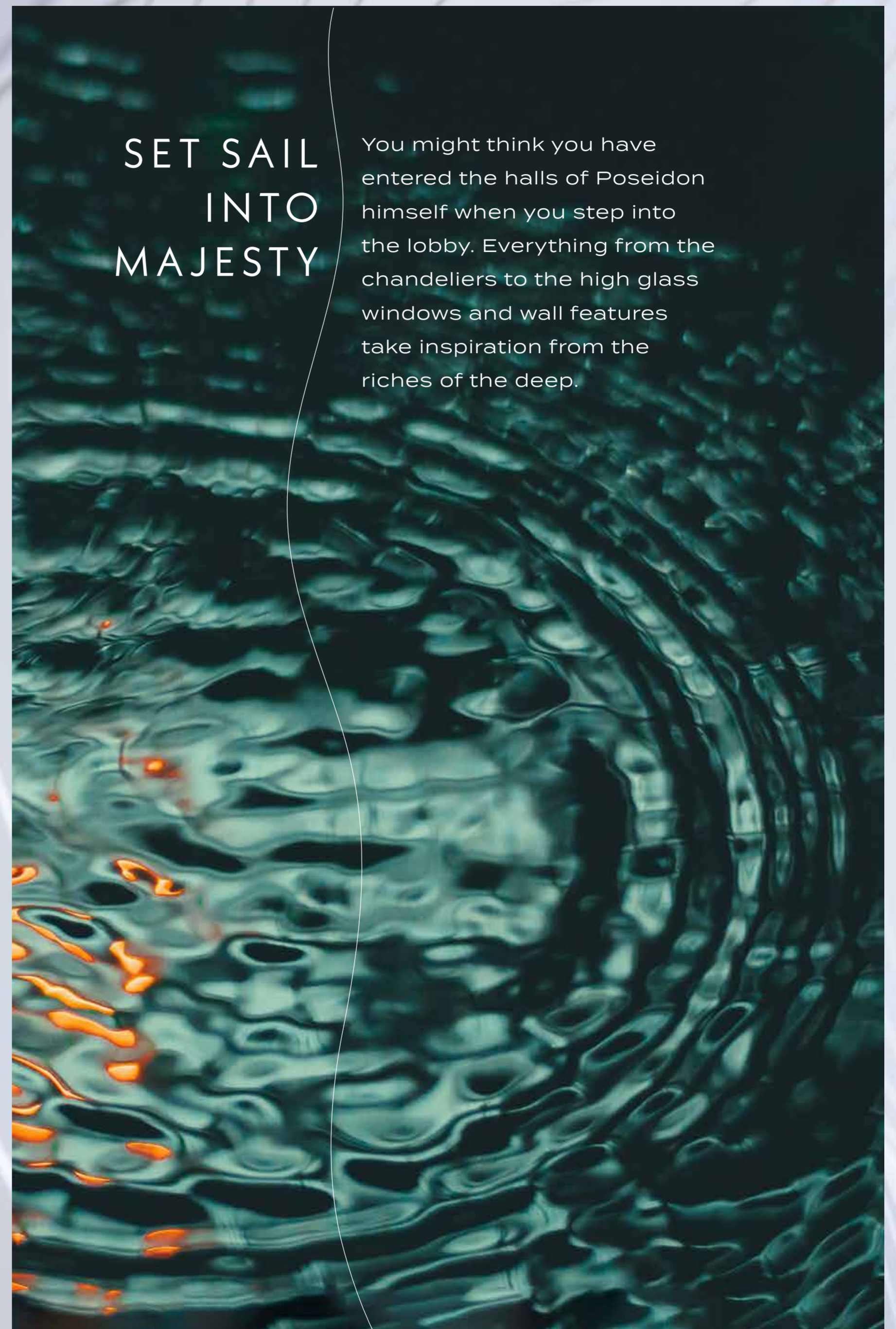


The little ones will never skip a class at the virtual reality school, where educational lessons are laser-projected on a water fountain. Finally, treat your ears to a scintillating performance, or put your own vocal chords to the test at the rooftop Opera Pavilion.



SET SAIL INTO MAJESTY

You might think you have entered the halls of Poseidon himself when you step into the lobby. Everything from the chandeliers to the high glass windows and wall features take inspiration from the riches of the deep.





JAMAC BY CAVALLI





CAMACRAY BY CAVALLI

MARITIME PLEASURES, EXPLORED

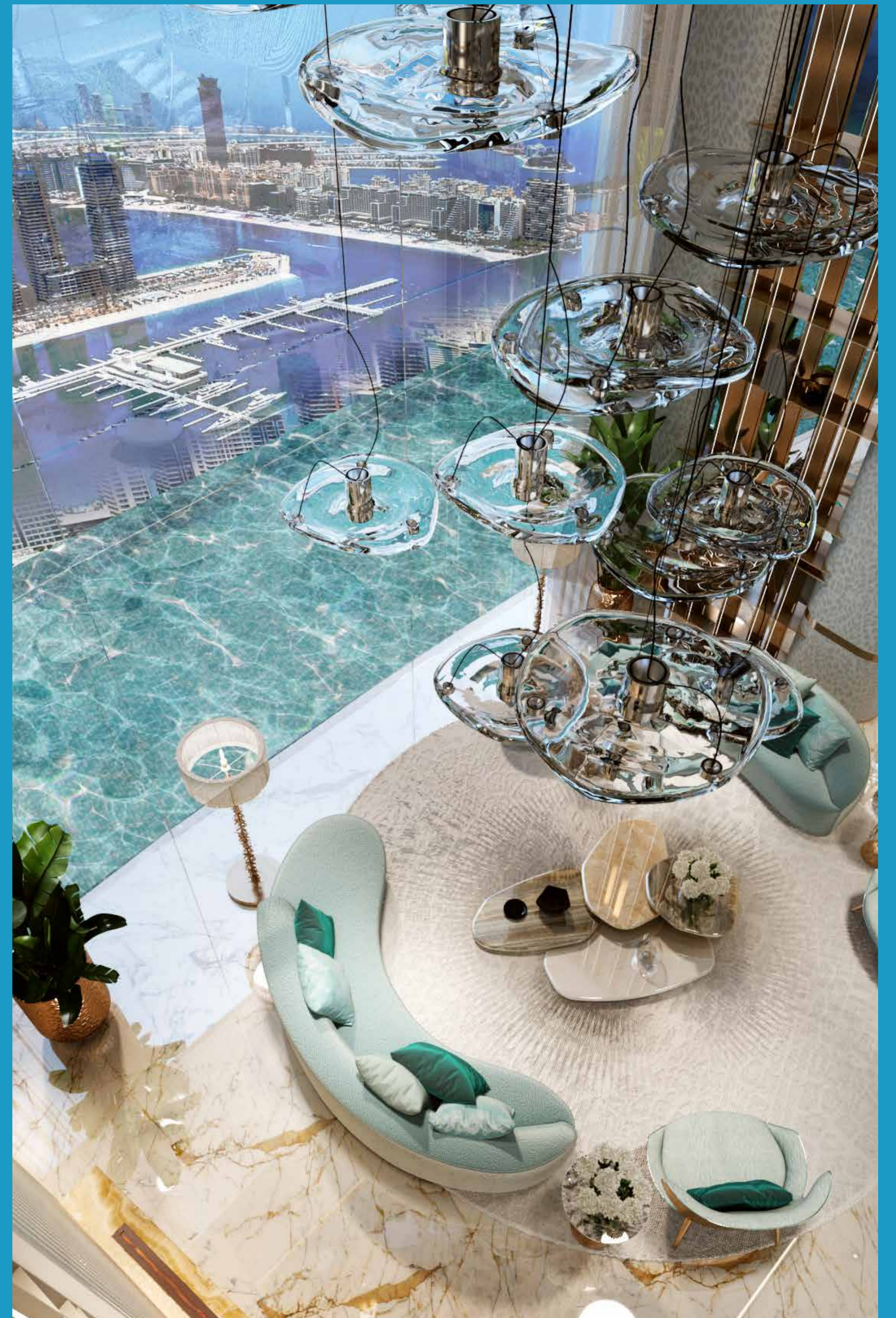
The song of the sea is like a mermaid's call. Unmistakable, and inescapable. Dance to its tune at some of the many amenities on the Podium Level. Pirouette through an elegantly crafted water maze. Dive into a luxury snorkeling experience in search of Cavalli treasures. Find your balance atop a surfboard at the wave pool. Or simply relax on a hammock, suspended above an infinity pool, as a smart-tray brings you a beverage of your choice whenever you desire.

And then there's the crowning glory of DAMAC Bay by Cavalli... an enormous water fountain in the central tower that is synced to the opera performances, putting on a stunning show visible from miles away.



A WORLD
OF YOUR
OWN

Surround yourself with
the sky, the sun and
the sea, on an island
of happiness that
you have created
for yourself.



Above the podium, from the 2nd to the 32nd floors are the luxury 1-, 2- and 3-bedroom units. All of these have been crafted in exquisite detail to provide a stunning seafront lifestyle.





DAMAC BAY BY CAVALLI





BUT FOR THE MOST DISCERNING OF CAPTAINS...

Only the super-luxury units will do. These are found on the 33rd to the 42nd floors, and range in size from 3- to 5-bedroom duplex units. All of these units afford commanding views of the sea and the shore alike. These are truly the pinnacle of seafront luxury living.

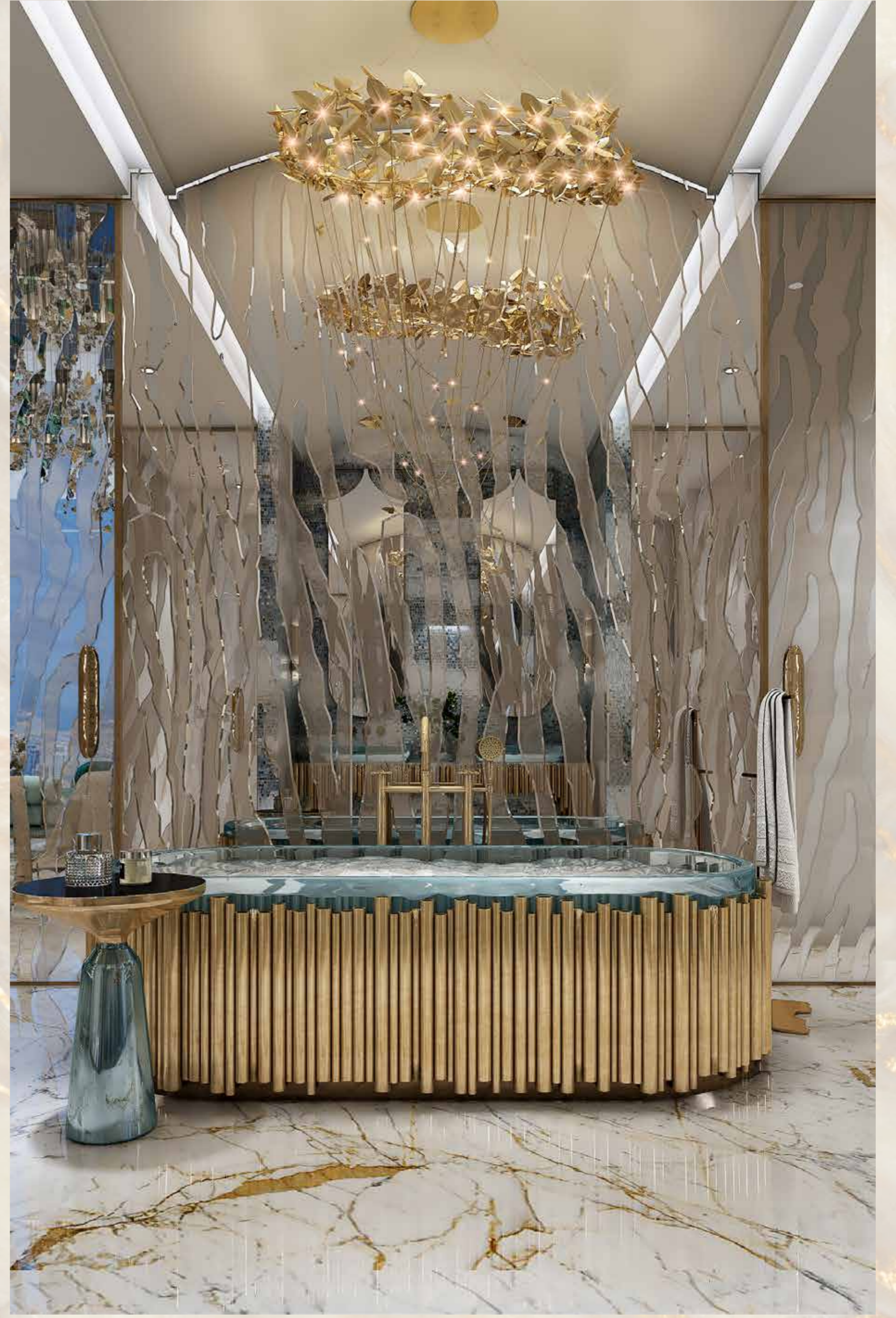




DAMAC BAY BY CA

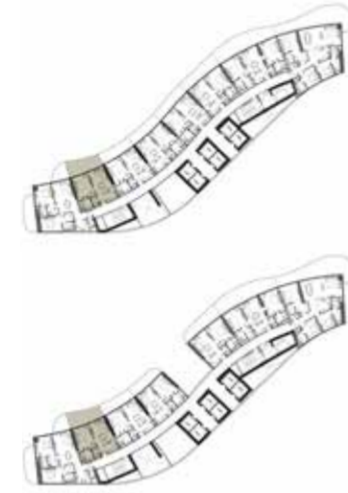


DAMAC BAY BY CAVALLI



1-BEDROOM LUXURY

TYPE 01



TOWER A:
LEVELS:
2,6,12,15,21,25,29

TOWER B:
LEVELS:
2,8,12,19,21,29,32

TOWER A:
LEVEL:
18

TOWER B:
LEVEL:
14

1-BEDROOM LUXURY

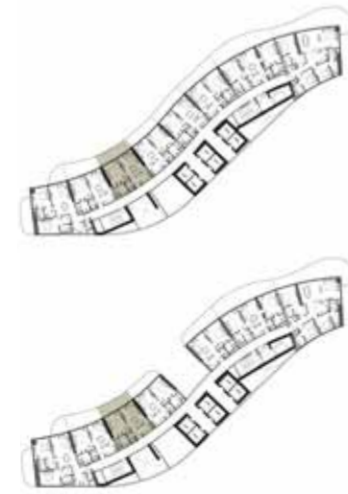
TYPE 03



TOWER A:
LEVELS:
2,6,12,15,21,25,29

TOWER B:
LEVELS:
2,8,12,19,21,29,32

TYPE 02



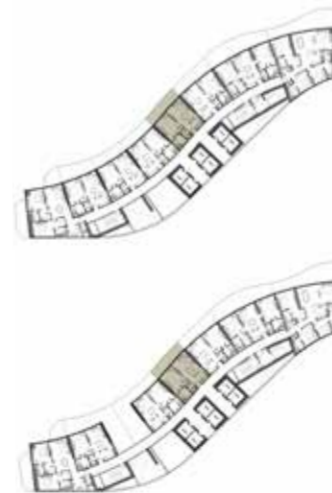
TOWER A:
LEVELS:
2,6,12,15,21,25,29

TOWER B:
LEVELS:
2,8,12,19,21,29,32

TOWER A:
LEVEL:
18

TOWER B:
LEVEL:
14

TYPE 04



BALCONY TYPE 1
TOWER A:
LEVELS:
2,6,12,15,21,25,29

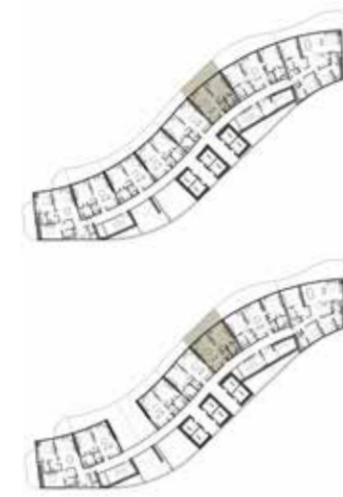
TOWER B:
LEVELS:
2,8,12,19,21,29,32

SKY GARDEN 1
BALCONY TYPE 0
TOWER A:
LEVEL:
9

TOWER B:
LEVEL:
5

1-BEDROOM LUXURY

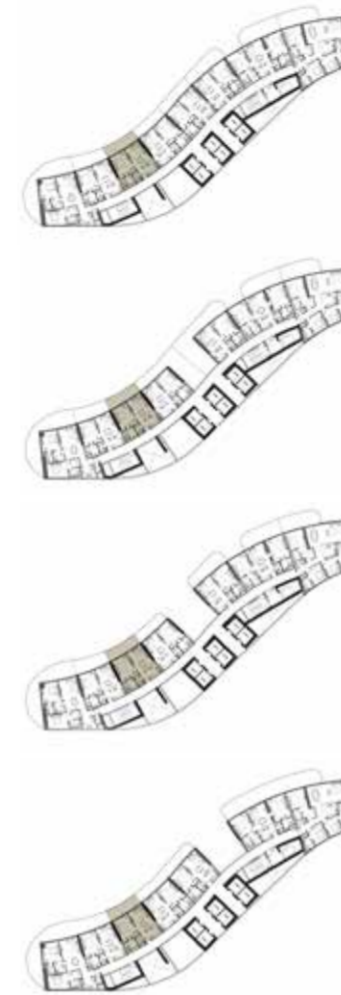
TYPE 05



BALCONY TYPE 1
TOWER A:
 LEVELS:
 2,6,12,15,21,25,29
TOWER B:
 LEVELS:
 2,8,12,19,21,29,32
SKY GARDEN 1
BALCONY TYPE 0
TOWER A:
 LEVEL:
 9
TOWER B:
 LEVEL:
 5

1-BEDROOM LUXURY

TYPE 07



TOWER A:
 LEVELS:
 3,5,13,14,30,32
TOWER B:
 LEVELS:
 3,9,17,18,27,30
TOWER A:
 LEVEL:
 17
TOWER B:
 LEVEL:
 13
TOWER A:
 LEVEL:
 19
TOWER B:
 LEVEL:
 15
TOWER A:
 LEVEL:
 27
TOWER B:
 LEVEL:
 25



TYPE 06



TOWER A:
 LEVELS:
 3,5,13,14,30,32
TOWER B:
 LEVELS:
 3,9,17,18,27,30
TOWER A:
 LEVEL:
 17
TOWER B:
 LEVEL:
 13
TOWER A:
 LEVEL:
 19
TOWER B:
 LEVEL:
 15
TOWER A:
 LEVEL:
 27
TOWER B:
 LEVEL:
 25

TYPE 08

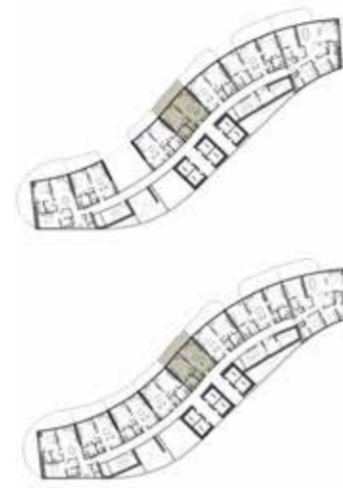


TOWER A:
 LEVELS:
 3,5,13,14,30,32
TOWER B:
 LEVELS:
 3,9,17,18,27,30
TOWER A:
 LEVEL:
 17
TOWER B:
 LEVEL:
 25



1-BEDROOM LUXURY

TYPE 09



**SKY GARDEN 1
BALCONY TYPE 2**

TOWER A:
LEVEL:
11

TOWER B:
LEVEL:
7

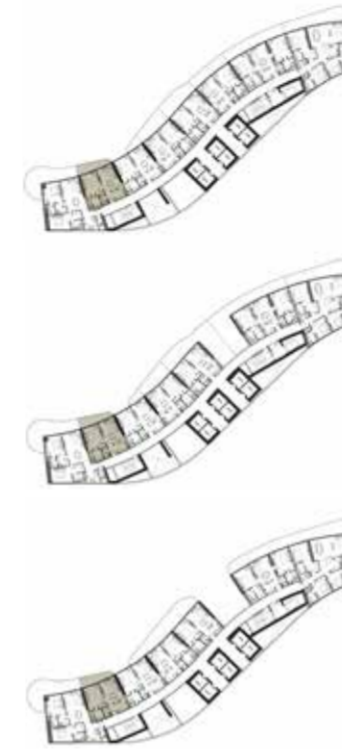
BALCONY TYPE 2

TOWER A:
LEVELS:
3,5,13,14,30,32

TOWER B:
LEVELS:
3,9,17,18,27,30

1-BEDROOM LUXURY

TYPE 11



TOWER A:
LEVELS:
4,7,8,16,20,22,24,31

TOWER B:
LEVELS:
4,10,11,16,20,22,28,31

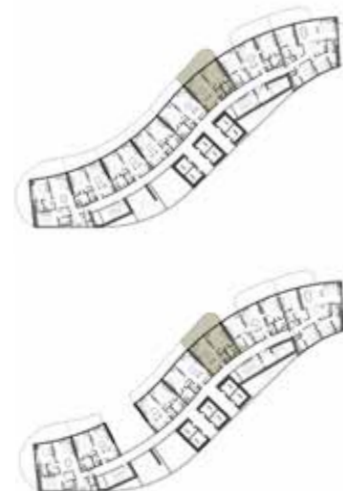
TOWER A:
LEVEL:
26

TOWER B:
LEVEL:
24

TOWER A:
LEVEL:
28

TOWER B:
LEVEL:
26

TYPE 10



BALCONY TYPE 2

TOWER A:
LEVELS:
3,5,13,14,30,32

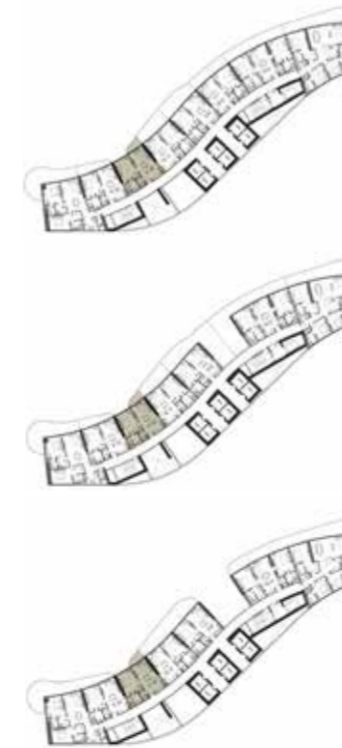
TOWER B:
LEVELS:
3,9,17,18,27,30

**SKY GARDEN 1
BALCONY TYPE 2**

TOWER A:
LEVEL:
11

TOWER B:
LEVEL:
7

TYPE 12



TOWER A:
LEVELS:
4,7,8,16,20,22,24,31

TOWER B:
LEVELS:
4,10,11,16,20,22,28,31

TOWER A:
LEVEL:
26

TOWER B:
LEVEL:
24

TOWER A:
LEVEL:
28

TOWER B:
LEVEL:
26

1-BEDROOM LUXURY

TYPE 13



TOWER A:
LEVELS:
4,7,8,16,20,22,24,31

TOWER B:
LEVELS:
4,10,11,16,20,22,28,31

TOWER A:
LEVEL:
26

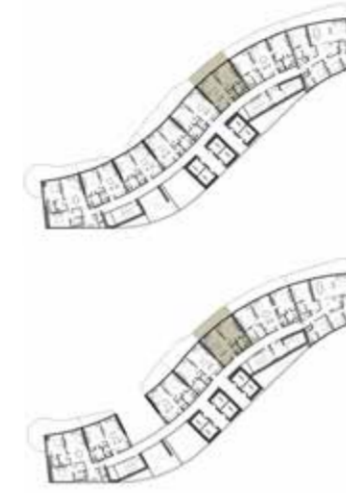
TOWER B:
LEVEL:
24

TOWER A:
LEVEL:
28

TOWER B:
LEVEL:
26

1-BEDROOM LUXURY

TYPE 15



BALCONY TYPE 3

TOWER A:
LEVELS:
4,7,8,16,20,22,24,31

TOWER B:
LEVELS:
4,10,11,16,20,22,28,31

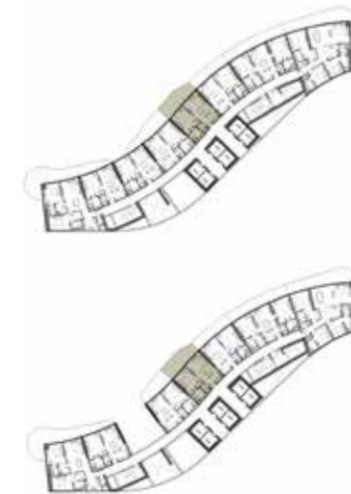
SKY GARDEN 1

BALCONY TYPE 1

TOWER A:
LEVEL:
10

TOWER B:
LEVEL:
6

TYPE 14



BALCONY TYPE 3

TOWER A:
LEVELS:
4,7,8,16,20,22,24,31

TOWER B:
LEVELS:
4,10,11,16,20,22,28,31

SKY GARDEN 1

BALCONY TYPE 1

TOWER A:
LEVEL:
10

TOWER B:
LEVEL:
6

TYPE 16



TOWER A:
LEVEL:
9

TOWER B:
LEVEL:
5

1-BEDROOM LUXURY

TYPE 17



TOWER A:
LEVEL:
9

TOWER B:
LEVEL:
5

1-BEDROOM LUXURY

TYPE 19



TOWER A:
LEVEL:
10

TOWER B:
LEVEL:
6

TYPE 18



TOWER A:
LEVEL:
10

TOWER B:
LEVEL:
6

TYPE 20



TOWER A:
LEVEL:
11

TOWER B:
LEVEL:
7

1-BEDROOM LUXURY

TYPE 21



TOWER A:
LEVEL:
11

TOWER B:
LEVEL:
7

1-BEDROOM LUXURY

TYPE 23



**SKY GARDEN 2
BALCONY TYPE O**

TOWER A:
LEVEL:
17

TOWER B:
LEVEL:
13

TYPE 22



TOWER A:
LEVEL:
17

TOWER B:
LEVEL:
13

TYPE 24



TOWER A:
LEVEL:
18

TOWER B:
LEVEL:
14

1-BEDROOM LUXURY

TYPE 25



**SKY GARDEN 2
BALCONY TYPE 1**
TOWER A:
LEVEL:
18
TOWER B:
LEVEL:
14

1-BEDROOM LUXURY

TYPE 27



**SKY GARDEN 2
BALCONY TYPE 2**
TOWER A:
LEVEL:
19
TOWER B:
LEVEL:
15

TYPE 26



TOWER A:
LEVEL:
19
TOWER B:
LEVEL:
15

TYPE 28



**SKY GARDEN 3
BALCONY TYPE O**
TOWER A:
LEVEL:
26
TOWER B:
LEVEL:
24

1-BEDROOM LUXURY

TYPE 29

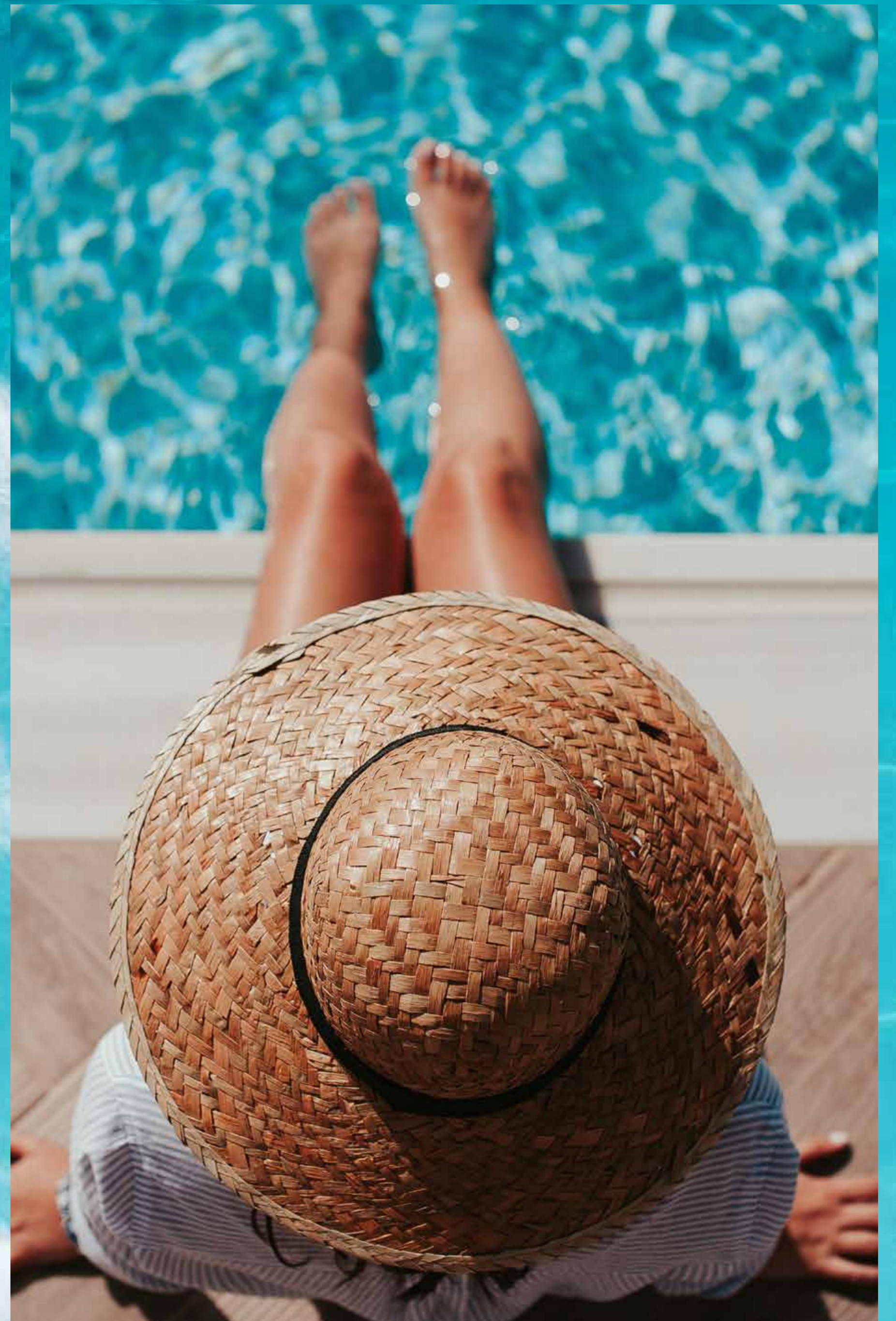


**SKY GARDEN 3
BALCONY TYPE 1**
TOWER A:
LEVEL:
27
TOWER B:
LEVEL:
25

TYPE 30



**SKY GARDEN 3
BALCONY TYPE 2**
TOWER A:
LEVEL:
28
TOWER B:
LEVEL:
26

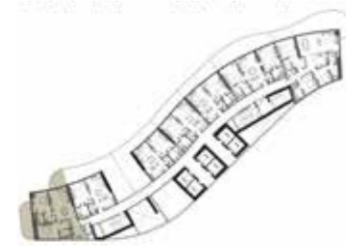


2-BEDROOM LUXURY

TYPE 01



BALCONY TYPE 1
TOWER A:
 LEVELS:
 2,6,12,15,21,25,29
TOWER B:
 LEVELS:
 2,8,12,19,21,29,32



SKY GARDEN 1
BALCONY TYPE 0
TOWER A:
 LEVEL:
 9
TOWER B:
 LEVEL:
 5



SKY GARDEN 1
BALCONY TYPE 0
TOWER A:
 LEVEL:
 18
TOWER B:
 LEVEL:
 14

2-BEDROOM LUXURY

TYPE 02



TOWER A:
 LEVELS:
 3,5,13,14,30,32
TOWER B:
 LEVELS:
 3,9,17,18,27,30



TOWER A:
 LEVEL:
 11
TOWER B:
 LEVEL:
 7



TOWER A:
 LEVEL:
 17
TOWER B:
 LEVEL:
 13



TOWER A:
 LEVEL:
 19
TOWER B:
 LEVEL:
 15



TOWER A:
 LEVEL:
 27
TOWER B:
 LEVEL:
 25

2-BEDROOM LUXURY

TYPE 03



TOWER A:
LEVELS:
4,7,8,16,20,22,24,31

TOWER B:
LEVELS:
4,10,11,16,20,22,28,31



TOWER A:
LEVEL:
10

TOWER B:
LEVEL:
6



TOWER A:
LEVEL:
26

TOWER B:
LEVEL:
24



TOWER A:
LEVEL:
28

TOWER B:
LEVEL:
26

2-BEDROOM LUXURY

TYPE 04



TOWER A:
LEVELS:
2,6,12,15,21,25,29

TOWER B:
LEVELS:
2,8,12,19,21,29,32



TOWER A:
LEVEL:
9

TOWER B:
LEVELS:
5



TOWER A:
LEVEL:
18

TOWER B:
LEVELS:
14

2-BEDROOM LUXURY

TYPE 05



2-BEDROOM LUXURY

TYPE 06



D A M A C B A Y B Y C A V A L L I

D A M A C B A Y B Y C A V A L L I



BALCONY TYPE 2
TOWER A:
 LEVELS:
 3,5,13,14,30,32
TOWER B:
 LEVELS:
 3,9,17,18,27,30



SKY GARDEN 1
BALCONY TYPE 2
TOWER A:
 LEVEL:
 11
TOWER B:
 LEVEL:
 7



SKY GARDEN 2
BALCONY TYPE 0
TOWER A:
 LEVEL:
 17
TOWER B:
 LEVEL:
 13



SKY GARDEN 2
BALCONY TYPE 2
TOWER A:
 LEVEL:
 19
TOWER B:
 LEVEL:
 15



BALCONY TYPE 3
TOWER A:
 LEVELS:
 4,7,8,16,20,22,24,31
TOWER B:
 LEVELS:
 4,10,11,16,20,22,28,31



SKY GARDEN 1
BALCONY TYPE 1
TOWER A:
 LEVEL:
 10
TOWER B:
 LEVEL:
 6

2-BEDROOM LUXURY

TYPE 07



**SKY GARDEN 3
BALCONY TYPE 0**
TOWER A:
 LEVEL:
 26
TOWER B:
 LEVEL:
 24

2-BEDROOM LUXURY

TYPE 08



**SKY GARDEN 3
BALCONY TYPE 1**
TOWER A:
 LEVEL:
 27
TOWER B:
 LEVEL:
 25

2-BEDROOM LUXURY

TYPE 09



**SKY GARDEN 3
BALCONY TYPE 2**
TOWER A:
LEVEL:
28
TOWER B:
LEVEL:
26

3-BEDROOM LUXURY

TYPE 01



BALCONY TYPE 1
TOWER A:
LEVELS:
2,6,12,15,21,25,29
TOWER B:
LEVELS:
2,8,12,19,21,29,32



**SKY GARDEN 1
BALCONY TYPE 0**
TOWER A:
LEVEL:
9
TOWER B:
LEVEL:
5



**SKY GARDEN 2
BALCONY TYPE 1**
TOWER A:
LEVEL:
18
TOWER B:
LEVEL:
14

3-BEDROOM LUXURY

TYPE O2



3-BEDROOM LUXURY

TYPE O3



BALCONY TYPE 2
TOWER A:
 LEVELS:
 3,5,13,14,30,32
TOWER B:
 LEVELS:
 3,9,17,18,27,30



SKY GARDEN 1
BALCONY TYPE 2
TOWER A:
 LEVEL:
 11
TOWER B:
 LEVEL:
 7



SKY GARDEN 2
BALCONY TYPE O
TOWER A:
 LEVEL:
 17
TOWER B:
 LEVEL:
 13



SKY GARDEN 2
BALCONY TYPE O
TOWER A:
 LEVEL:
 17
TOWER B:
 LEVEL:
 13



SKY GARDEN 2
BALCONY TYPE 2
TOWER A:
 LEVEL:
 19
TOWER B:
 LEVEL:
 15



BALCONY TYPE 3
TOWER A:
 LEVELS:
 4,7,8,16,20,22,24,31
TOWER B:
 LEVELS:
 4,10,11,16,20,22,28,31



SKY GARDEN 1
BALCONY TYPE 1
TOWER A:
 LEVEL:
 10
TOWER B:
 LEVEL:
 6



SKY GARDEN 3
BALCONY TYPE O
TOWER A:
 LEVEL:
 26
TOWER B:
 LEVEL:
 24



SKY GARDEN 3
BALCONY TYPE 2
TOWER A:
 LEVEL:
 28
TOWER B:
 LEVEL:
 26

3-BEDROOM SUPER LUXURY DUPLEX

TYPE 01



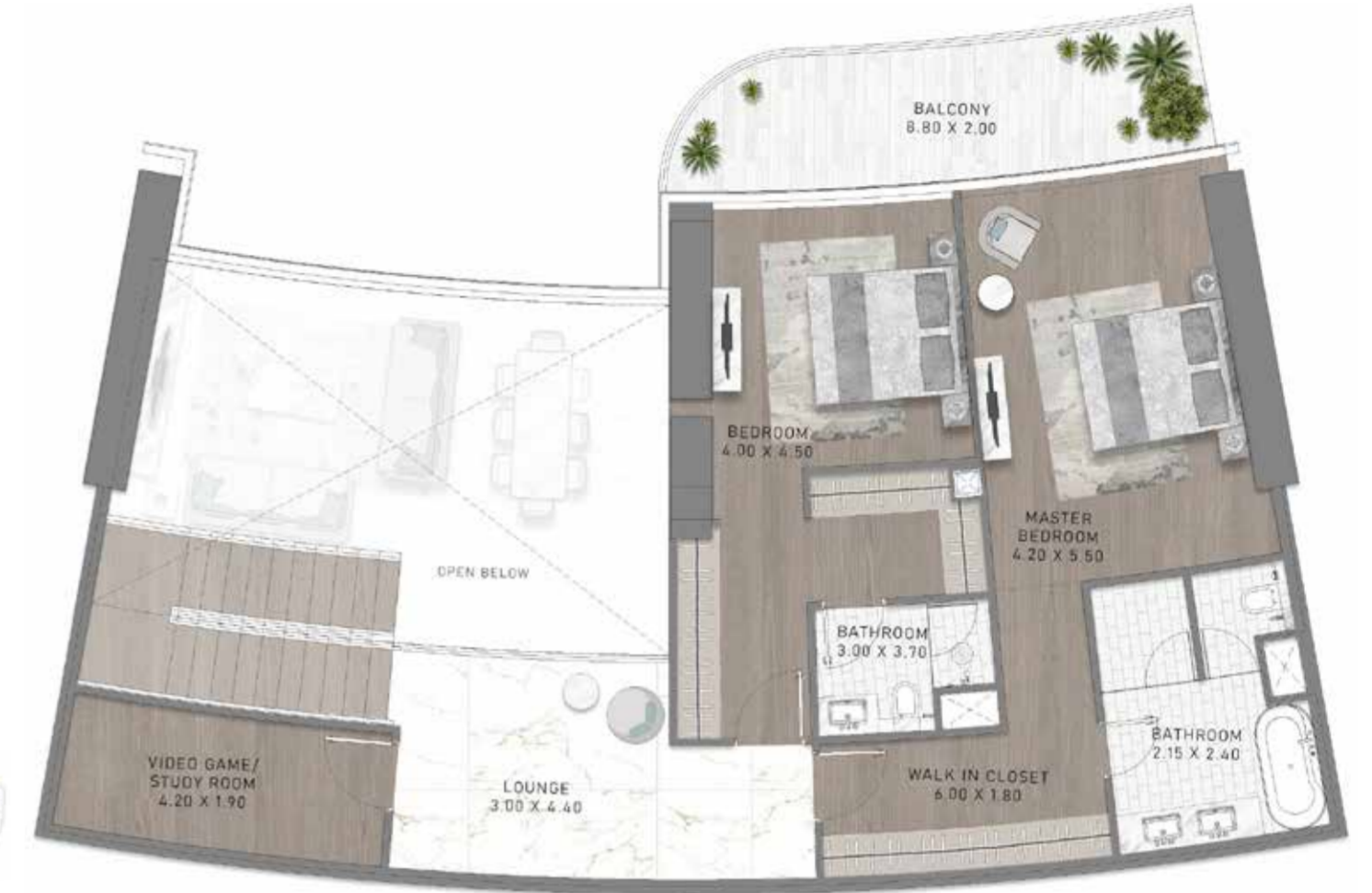
UPPER FLOOR



SUPER LUXURY BALCONY TYPE 1
TOWER A:
 LEVELS:
 33,35,37,39
TOWER B:
 LEVELS:
 33,35,37,39,41

3-BEDROOM SUPER LUXURY DUPLEX

TYPE 02



UPPER FLOOR



SUPER LUXURY BALCONY TYPE 1
TOWER A:
 LEVELS:
 33,37
TOWER B:
 LEVELS:
 33,37,41



LOWER FLOOR



LOWER FLOOR

3-BEDROOM SUPER LUXURY DUPLEX

TYPE 03



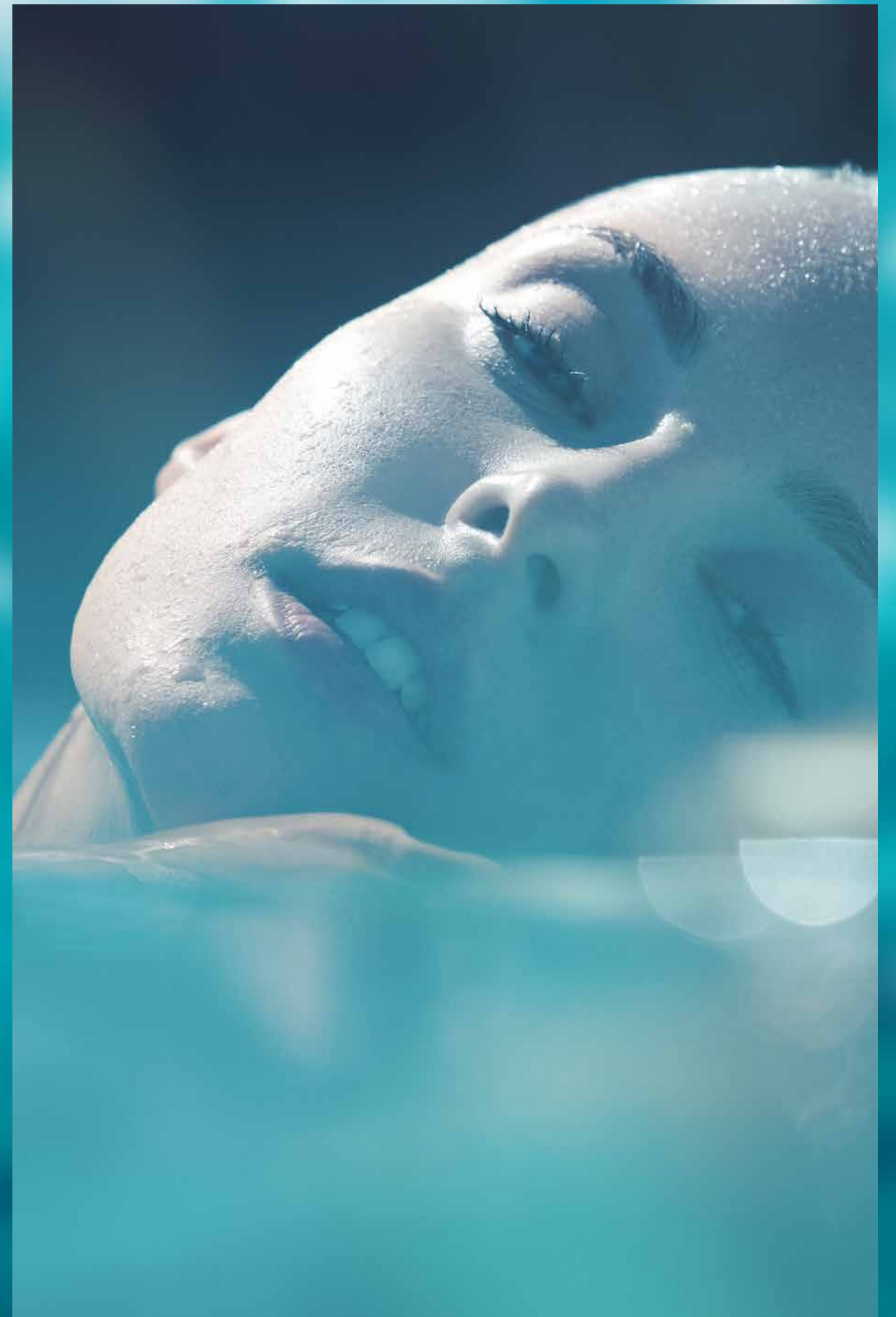
UPPER FLOOR



**SUPER LUXURY
BALCONY TYPE 2**
TOWER A:
 LEVELS:
 35,39
TOWER B:
 LEVELS:
 35,39



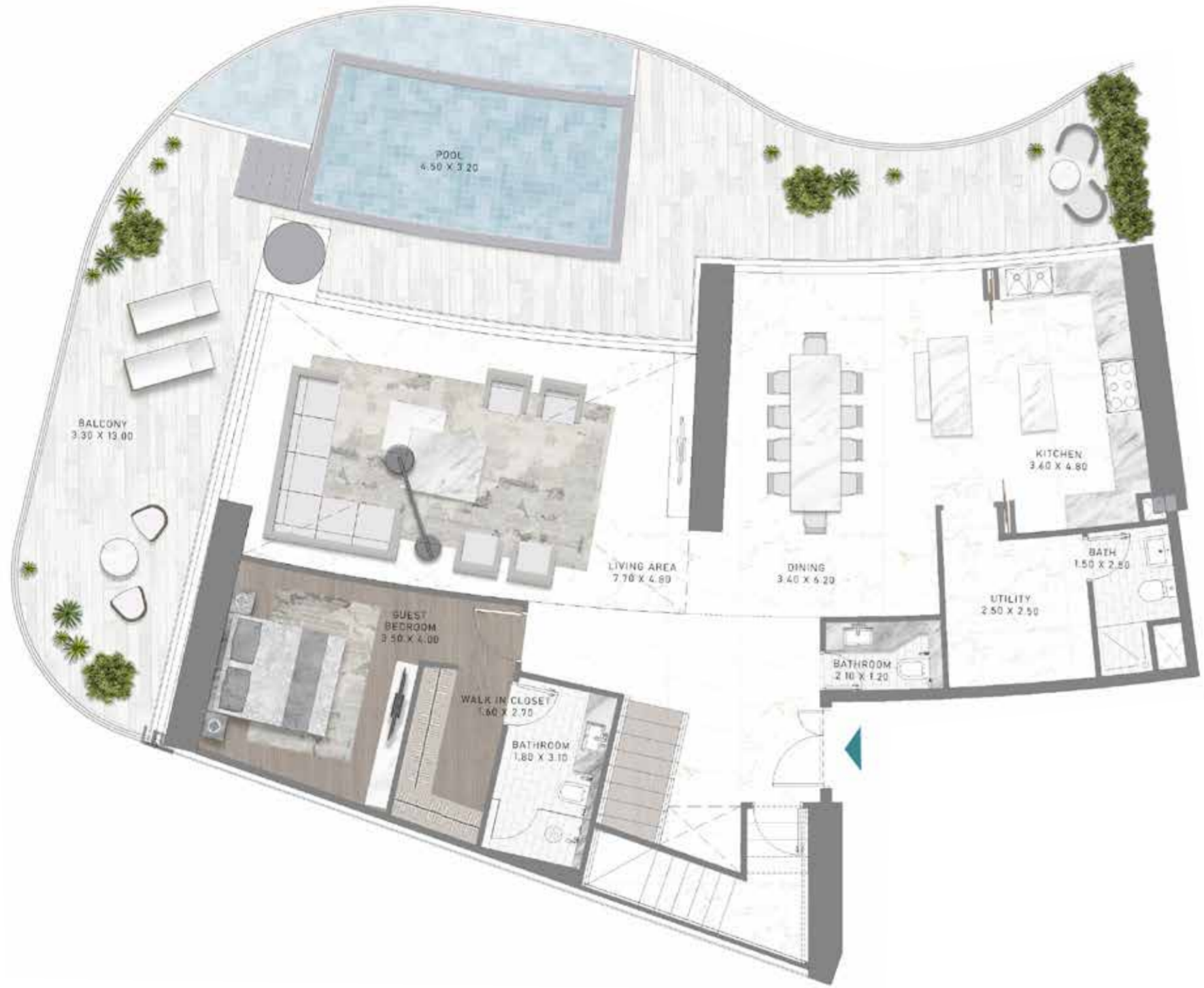
LOWER FLOOR



4-BEDROOM SUPER LUXURY DUPLEX

4-BEDROOM SUPER LUXURY DUPLEX

TYPE 01



LOWER FLOOR



UPPER FLOOR



SUPER LUXURY BALCONY TYPE 2
TOWER A:
 LEVELS:
 35,39
TOWER B:
 LEVELS:
 35,39

4-BEDROOM SUPER LUXURY DUPLEX

TYPE 02

4-BEDROOM SUPER LUXURY DUPLEX



LOWER FLOOR



UPPER FLOOR



**SUPER LUXURY
BALCONY TYPE 1**
TOWER A:
 LEVELS:
 33,37
TOWER B:
 LEVELS:
 33,37,41

5-BEDROOM SUPER LUXURY DUPLEX

TYPE 01

5-BEDROOM SUPER LUXURY DUPLEX



LOWER FLOOR



UPPER FLOOR



**SUPER LUXURY
BALCONY TYPE 2**
TOWER A:
LEVELS:
35,39
TOWER B:
LEVELS:
35,39

5-BEDROOM SUPER LUXURY DUPLEX

TYPE 02

5-BEDROOM SUPER LUXURY DUPLEX



LOWER FLOOR



UPPER FLOOR



**SUPER LUXURY
BALCONY TYPE 1**
TOWER A:
 LEVELS:
 33,37
TOWER B:
 LEVELS:
 33,37,41

DAMAC PROPERTIES

LIVE THE LUXURY

DAMAC Properties has been at the forefront of the Middle East's luxury real estate market since 2002, delivering award-winning residential, commercial and leisure properties across the region, including the UAE, Saudi Arabia, Qatar, Jordan, Lebanon, Iraq, Maldives, Canada, the United States, as well as the United Kingdom. Since then, the company has delivered approximately 42,000 homes, with a development portfolio of more than 28,000 at various stages of planning and progress.*

Joining forces with some of the world's most eminent fashion and lifestyle brands, DAMAC has brought new and exciting living concepts to the market in collaborations that include a golf course managed by The Trump Organization, and luxury homes in association with Versace, Cavalli, Just Cavalli, de Grisogono, Paramount Hotels & Resorts, Rotana and the Radisson Hotel Group. With a consistent vision, and strong momentum, DAMAC Properties is building the next generation of Middle Eastern luxury living.

DAMAC places a great emphasis on philanthropy and corporate social responsibility. The Hussain Sajwani – DAMAC Foundation, a joint initiative between DAMAC Group and Hussain Sajwani, recently announced the launch of the 'Fresh Slate' in collaboration with the Dubai Police General Headquarters, aimed at aiding detainees in Dubai's Punitive and Correctional Institutions who have been charged with petty offences.

The HSDF has also pledged AED 5 million for the 1 Billion Meals initiative launched by Vice President and Prime Minister of the UAE, and Ruler of Dubai, His Highness Sheikh Mohammed bin Rashid Al Maktoum, at the start of Ramadan 2022, aimed at providing meals to underprivileged communities in 50 countries across the world.

DAMAC has also supported the vision of Sheikh Mohammed to train one million Arab coders in creating an empowered society through learning and skills development, an initiative that successfully wrapped up in May 2022.

LUXURY BY APPOINTMENT

CONTACT US AT ANY OF OUR OFFICES OR VISIT [DAMACPROPERTIES.COM](https://damacproperties.com)

UNITED ARAB EMIRATES

Dubai
Tel: 800-DAMAC (800-32622)
E-mail: dubai@damacgroup.com

Park Towers – Sales Centre
Dubai International Financial Centre

AYKON City – Sales Centre
Floor 63, Sheikh Zayed Road

DAMAC Hills – Sales Centre
Sheikh Zayed bin Hamdan Al Nahyan
Street

DAMAC Hills – Sales Centre
Golf Veduta, Townhouse TH2

DAMAC Hills – Sales Centre
Bellavista (Carson Building)

DAMAC Hills 2 – Sales Centre
Amazonia Cluster, Villa 333

DAMAC Hills 2 – Sales Centre
Water Town

QATAR

Building 90, New Solta Area
Ali bin Abi Talib Street
Next to Omar bin Al Khattab
Health Centre
Tel: +974 44 666 986
Fax: +974 44 554 576
E-mail: doha@damacgroup.com

KINGDOM OF SAUDI ARABIA

DAMAC Towers Riyadh
South Tower
Olaya District
King Fahd Road
PO Box 102460
Tel: +966 11 835 0300
E-mail: ksa@damacgroup.com

TURKEY

Levazım, Mah. Koru Sk.
Zorlu Centre No. 2
IC Kapi No. 347, Beşiktaş/İstanbul
Turkey
Tel: +90 212 892 0327
Fax: +90 212 890 7184
E-mail: turkey.office@damacgroup.com

LEBANON

Unit 1801, 18th Floor
DAMAC Tower
Omar Daouk Street
Mina El Hosn, Beirut Central District
Tel: +961 81 647 200
E-mail: beirut@damacgroup.com

JORDAN

Opposite Abdali Mall Gate #1
Al Istithmar Street
Abdali Project, Amman
Tel: +962 6 510 7000
Fax: +962 6 565 7896
E-mail: amman@damacgroup.com

UNITED KINGDOM

4th Floor, 100 Brompton Road
Opposite Harrods
Knightsbridge, London
SW3 1ER, United Kingdom
Tel: +44 (0) 207 590 8050
E-mail: sales@damactower.co.uk

DAMAC