



# THE ADDRESS

RESIDENCES

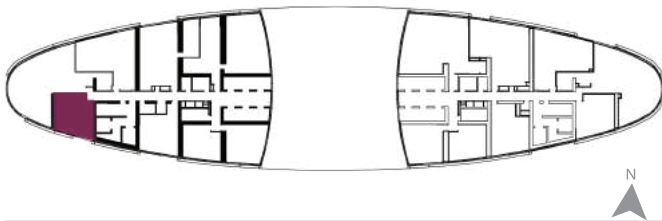
JUMEIRAH RESORT + SPA



**1 BEDROOM**

UNIT TYPE : S1A  
LEVELS: 18 to 41  
LEVELS: 43 to 72

SERVICED APARTMENTS



#### SELLABLE AREA

	sq. m	sq. ft
Suite Area	57	611 - 615
Balcony Area	08	89
Total Area	65	700 - 705

Disclaimer: 1. All materials, dimensions & drawings are approximate. 2. Information is subject to change without notice. 3. Actual suite area may vary from the stated area. 4. Drawings not to scale. 5. The developer reserves the right to make revisions/alterations without any liability whatsoever.



# THE ADDRESS

RESIDENCES

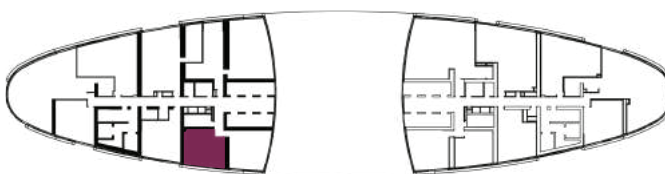
JUMEIRAH RESORT + SPA



1 BEDROOM

UNIT TYPE : S1C  
LEVELS: 18 to 41  
LEVELS: 43 to 62

SERVICED APARTMENTS



#### SELLABLE AREA

	sq. m	sq. ft
Suite Area	59	637 - 640
Total Area	59	637 - 640

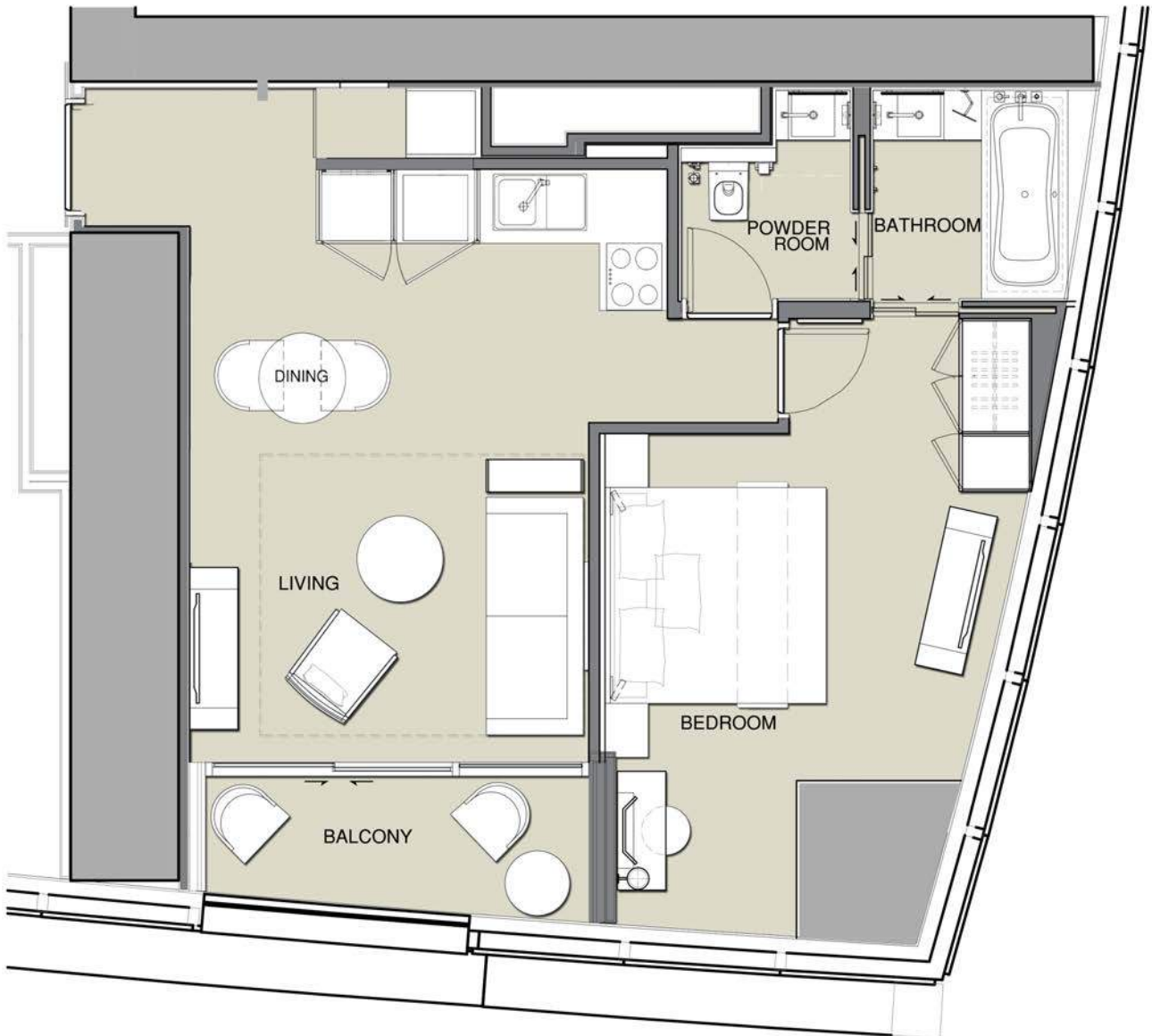




# THE ADDRESS

RESIDENCES

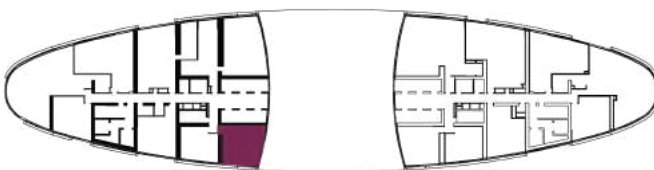
JUMEIRAH RESORT + SPA



1 BEDROOM

UNIT TYPE : S1D  
LEVELS: 18 to 41  
LEVELS: 43 to 62

SERVICED APARTMENTS



#### SELLABLE AREA

	sq. m	sq. ft
Suite Area	64 - 65	694 - 703
Balcony Area	7	71 - 73
Total Area	71 - 72	765 - 775

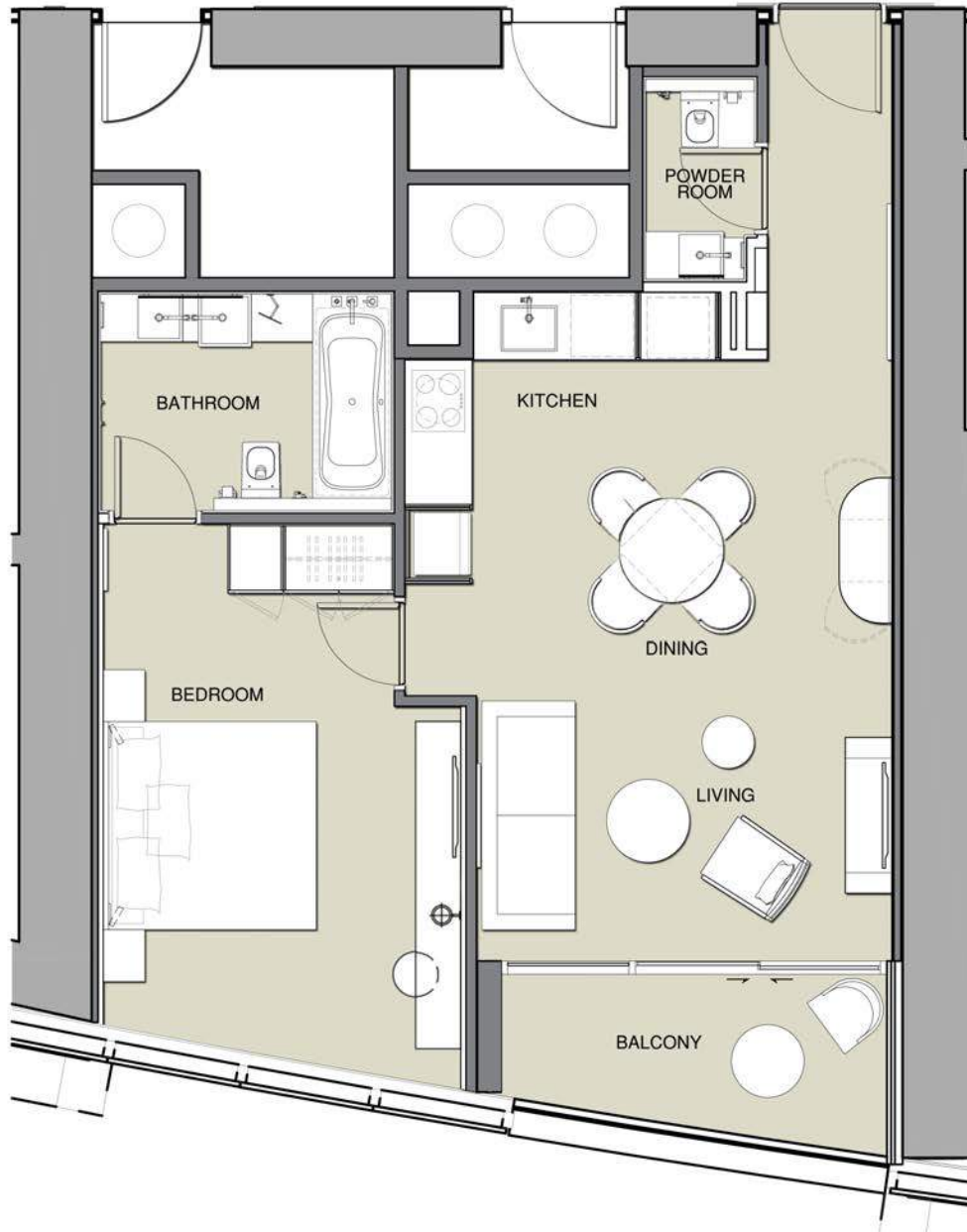
Disclaimer: 1. All materials, dimensions & drawings are approximate. 2. Information is subject to change without notice. 3. Actual suite area may vary from the stated area. 4. Drawings not to scale. 5. The developer reserves the right to make revisions/alterations without any liability whatsoever.



# THE ADDRESS

RESIDENCES

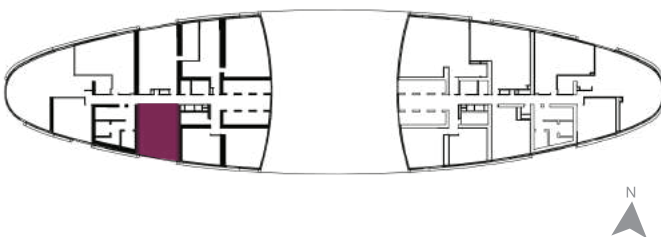
JUMEIRAH RESORT + SPA



1 BEDROOM

UNIT TYPE : S1F  
LEVELS: 18 to 41  
LEVELS: 43 to 72

SERVICED APARTMENTS



#### SELLABLE AREA

	sq. m	sq. ft
Suite Area	68 - 75	717 - 808
Balcony Area	0 - 7	0 - 78
Total Area	75	795 - 808

Disclaimer: 1. All materials, dimensions & drawings are approximate. 2. Information is subject to change without notice. 3. Actual suite area may vary from the stated area. 4. Drawings not to scale. 5. The developer reserves the right to make revisions/alterations without any liability whatsoever.



# THE ADDRESS

RESIDENCES

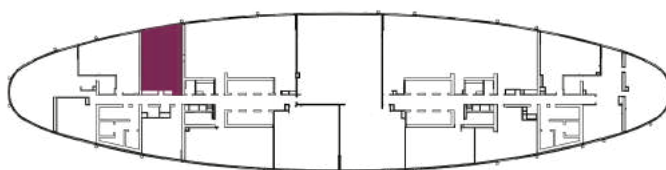
JUMEIRAH RESORT + SPA



1 BEDROOM

UNIT TYPE : S1G  
LEVELS: 68 to 72

SERVICED APARTMENTS



#### SELLABLE AREA

	sq. m	sq. ft
Suite Area	91	980
Balcony Area	16	176
Total Area	107	1155

Disclaimer: 1. All materials, dimensions & drawings are approximate. 2. Information is subject to change without notice. 3. Actual suite area may vary from the stated area. 4. Drawings not to scale. 5. The developer reserves the right to make revisions/alterations without any liability whatsoever.



# THE ADDRESS

RESIDENCES

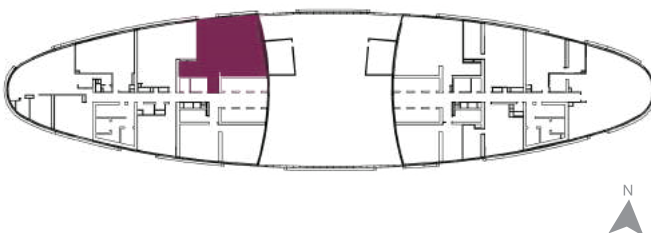
JUMEIRAH RESORT + SPA



2 BEDROOM

UNIT TYPE : S2A  
LEVELS: 63

SERVICED APARTMENTS



#### SELLABLE AREA

	sq. m	sq. ft
Suite Area	163	1759
Balcony Area	21	221
Total Area	184	1981

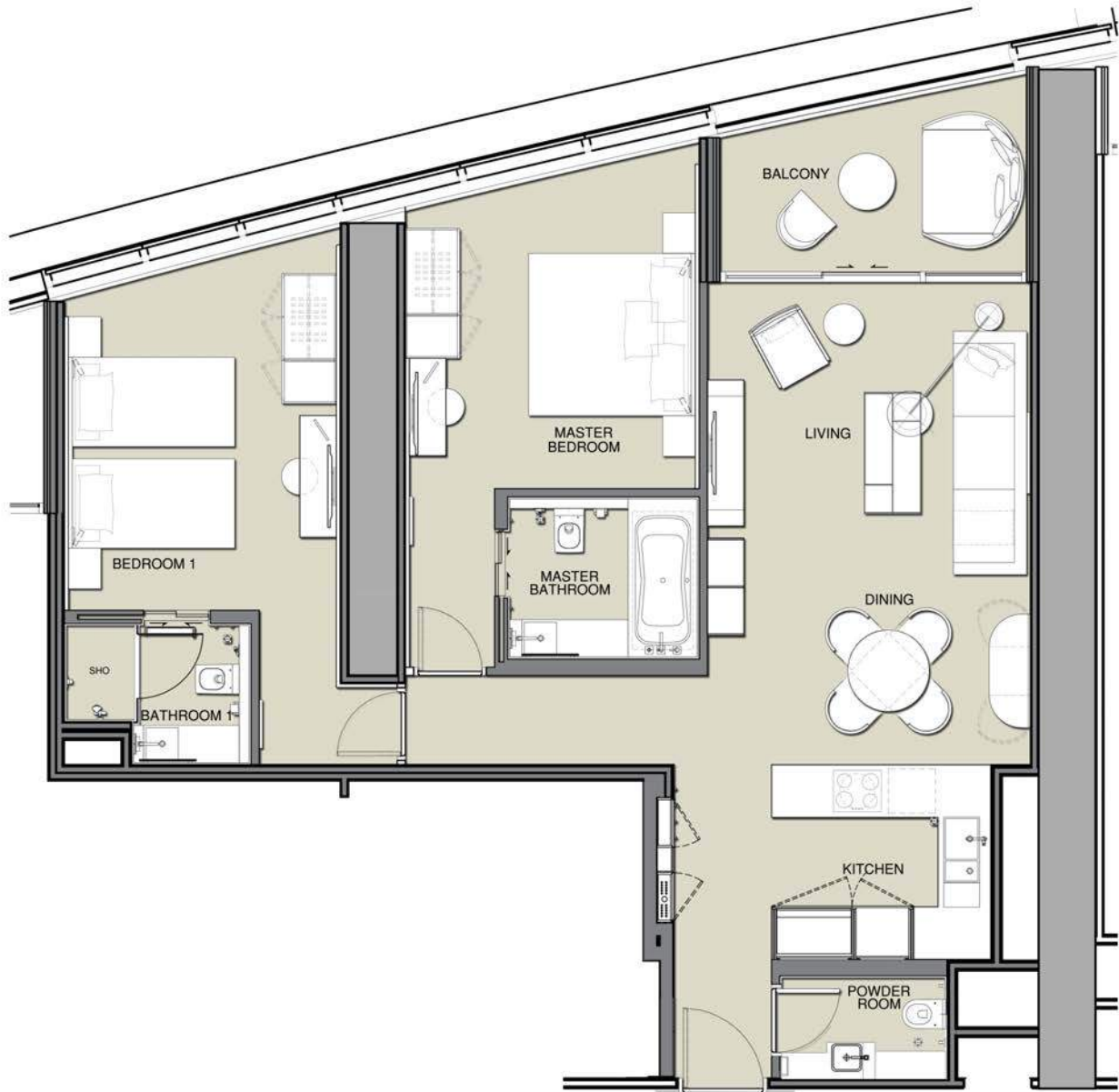
Disclaimer: 1. All materials, dimensions & drawings are approximate. 2. Information is subject to change without notice. 3. Actual suite area may vary from the stated area. 4. Drawings not to scale. 5. The developer reserves the right to make revisions/alterations without any liability whatsoever.



# THE ADDRESS

RESIDENCES

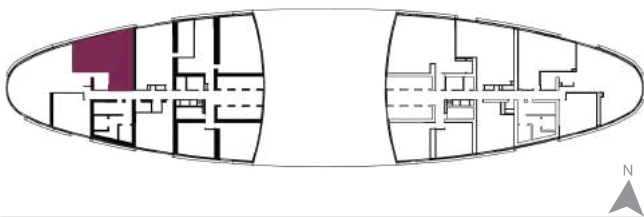
JUMEIRAH RESORT + SPA



**2 BEDROOM**

UNIT TYPE : S2C  
LEVELS: 18 to 41  
LEVELS: 43 to 72

SERVICED APARTMENTS



#### SELLABLE AREA

	sq. m	sq. ft
Suite Area	99 - 100	1066 - 1072
Balcony Area	10	106 - 109
Total Area	109 - 110	1171 - 1181

Disclaimer: 1. All materials, dimensions & drawings are approximate. 2. Information is subject to change without notice. 3. Actual suite area may vary from the stated area. 4. Drawings not to scale. 5. The developer reserves the right to make revisions/alterations without any liability whatsoever.



# THE ADDRESS

RESIDENCES

JUMEIRAH RESORT + SPA



2 BEDROOM

UNIT TYPE : S2D  
LEVELS: 64 to 67

SERVICED APARTMENTS



#### SELLABLE AREA

	sq. m	sq. ft
Suite Area	165	1777
Balcony Area	22	235
Total Area	187	2012

Disclaimer: 1. All materials, dimensions & drawings are approximate. 2. Information is subject to change without notice. 3. Actual suite area may vary from the stated area. 4. Drawings not to scale. 5. The developer reserves the right to make revisions/alterations without any liability whatsoever.

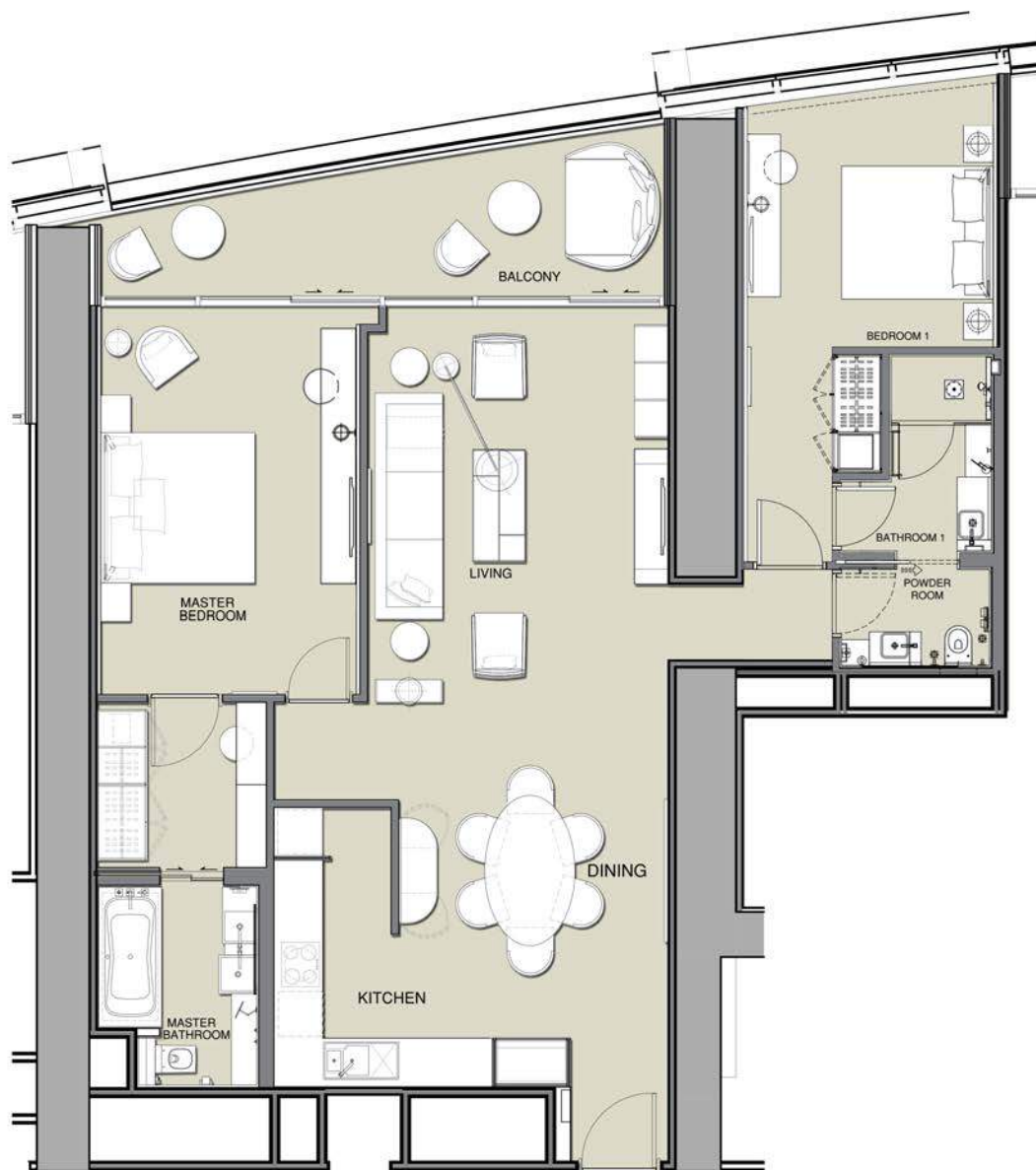




# THE ADDRESS

RESIDENCES

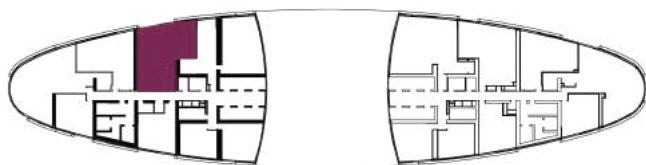
JUMEIRAH RESORT + SPA



2 BEDROOM

UNIT TYPE : S2E  
LEVELS: 18 to 41  
LEVELS: 43 to 67

SERVICED APARTMENTS



#### SELLABLE AREA

	sq. m	sq. ft
Suite Area	123 - 124	1320 - 1330
Balcony Area	16 - 17	176 - 178
Total Area	139 - 140	1497 - 1505

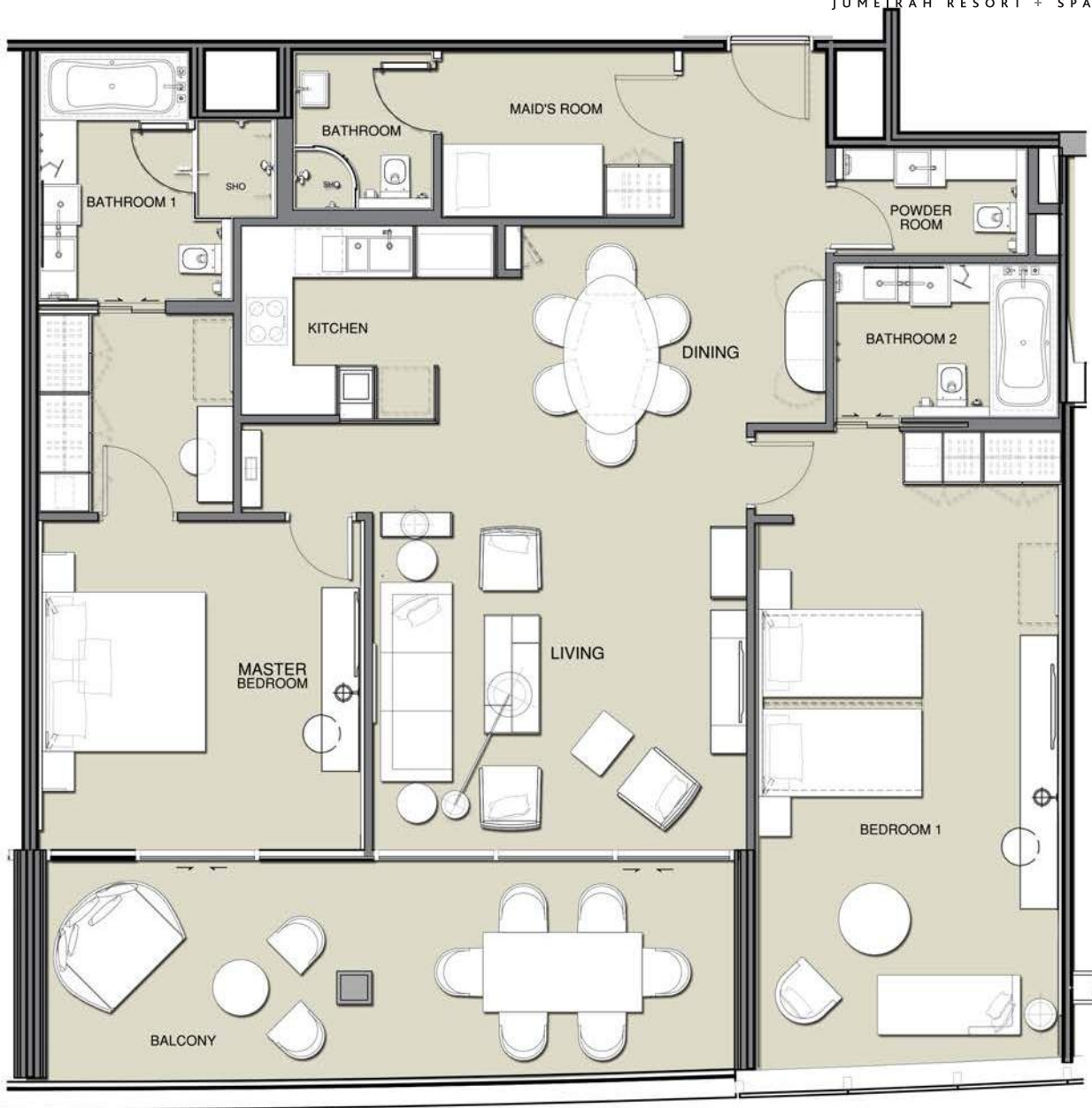
Disclaimer: 1. All materials, dimensions & drawings are approximate. 2. Information is subject to change without notice. 3. Actual suite area may vary from the stated area. 4. Drawings not to scale. 5. The developer reserves the right to make revisions/alterations without any liability whatsoever.



# THE ADDRESS

RESIDENCES

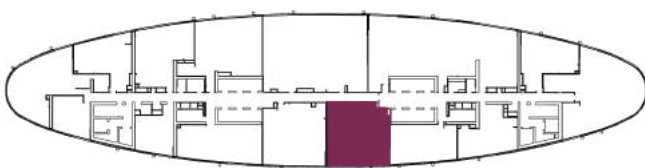
JUMEIRAH RESORT + SPA



2 BEDROOM

UNIT TYPE : S2J  
LEVELS: 64 to 67

SERVICED APARTMENTS



#### SELLABLE AREA

	sq. m	sq. ft
Suite Area	140	1507
Balcony Area	26	275
Total Area	166	1782

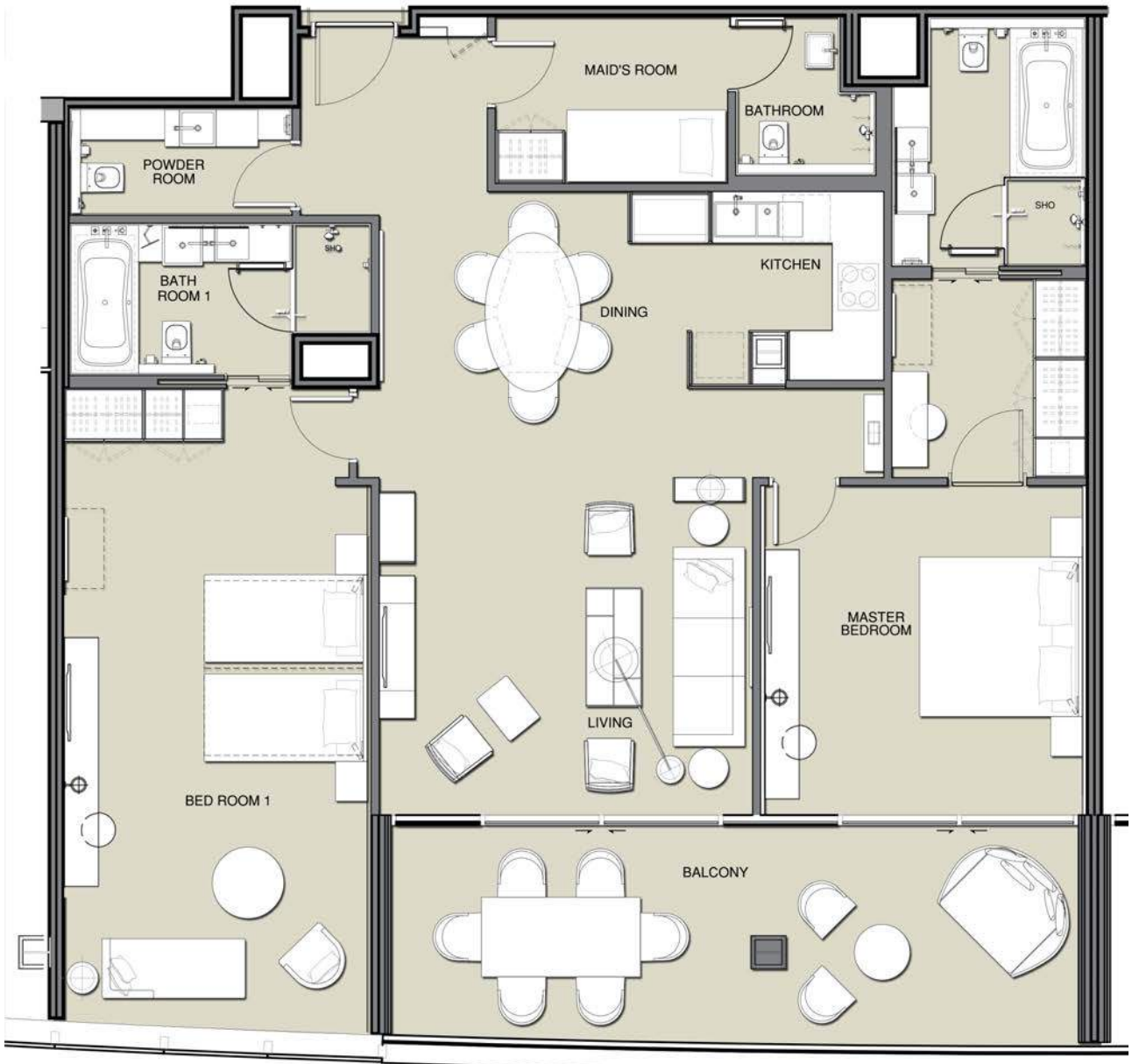
Disclaimer: 1. All materials, dimensions & drawings are approximate. 2. Information is subject to change without notice. 3. Actual suite area may vary from the stated area. 4. Drawings not to scale. 5. The developer reserves the right to make revisions/alterations without any liability whatsoever.



# THE ADDRESS

RESIDENCES

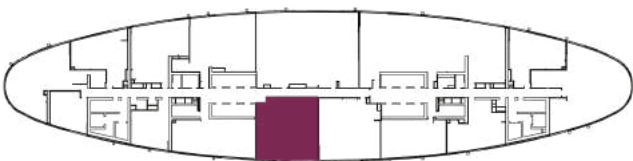
JUMEIRAH RESORT + SPA



**2 BEDROOM**

UNIT TYPE : S2K  
LEVELS: 64 to 72

SERVICED APARTMENTS



### SELLABLE AREA

	sq. m	sq. ft
Suite Area	140	1507
Balcony Area	26	276 - 282
Total Area	166	1783 - 1789

Disclaimer: 1. All materials, dimensions & drawings are approximate. 2. Information is subject to change without notice. 3. Actual suite area may vary from the stated area. 4. Drawings not to scale. 5. The developer reserves the right to make revisions/alterations without any liability whatsoever.



# THE ADDRESS

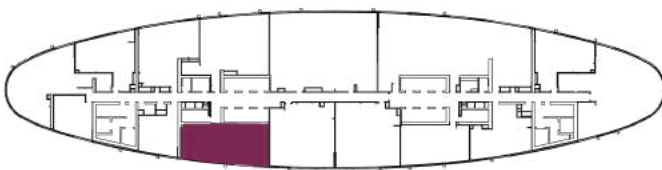
RESIDENCES  
JUMEIRAH RESORT + SPA



2 BEDROOM

UNIT TYPE : S2L  
LEVELS: 64 to 72

SERVICED APARTMENTS



#### SELLABLE AREA

	sq. m	sq. ft
Suite Area	133	1428 - 1434
Balcony Area	7	77
Total Area	140	1505 - 1511

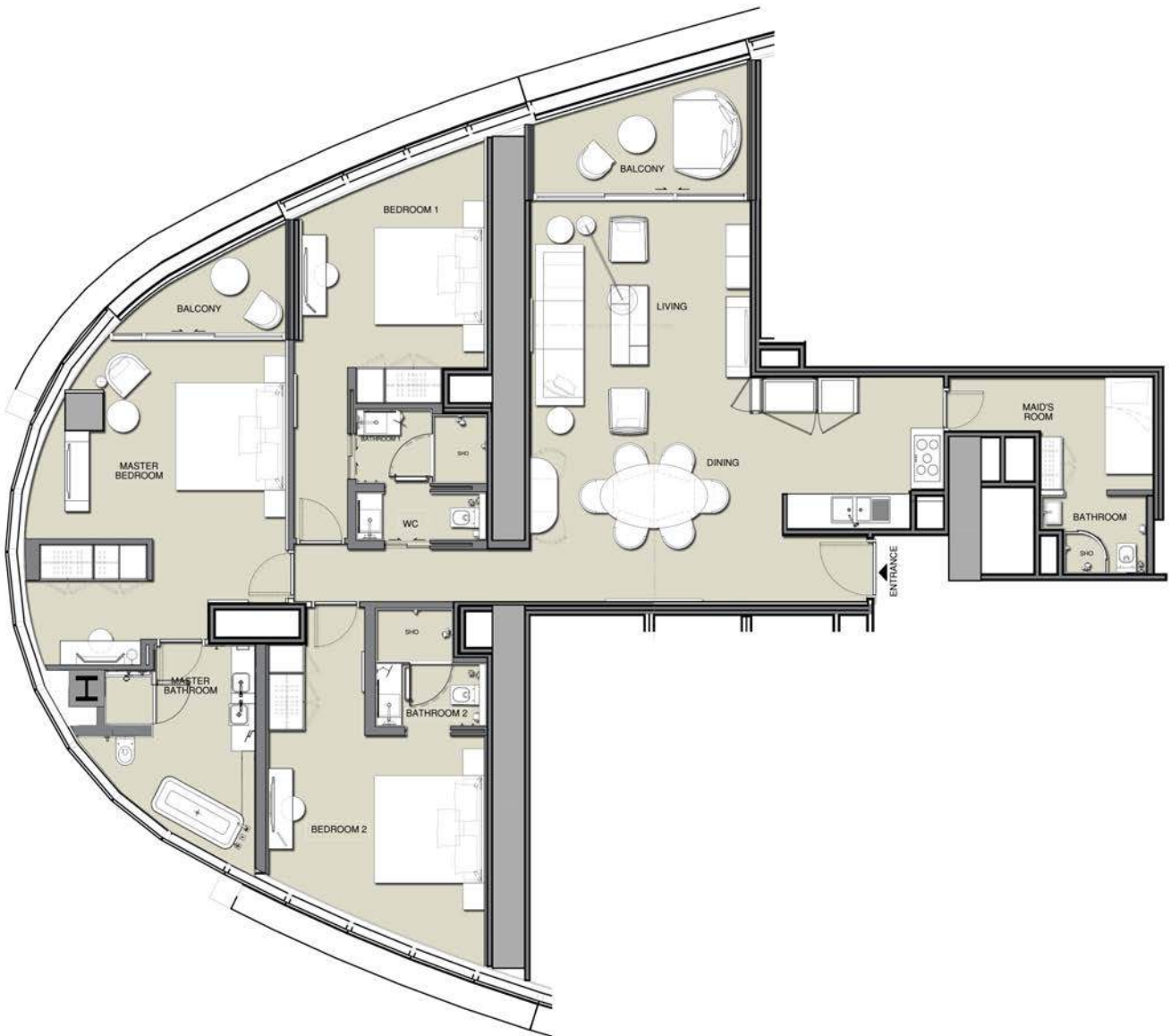
Disclaimer: 1. All materials, dimensions & drawings are approximate. 2. Information is subject to change without notice. 3. Actual suite area may vary from the stated area. 4. Drawings not to scale. 5. The developer reserves the right to make revisions/alterations without any liability whatsoever.



# THE ADDRESS

RESIDENCES

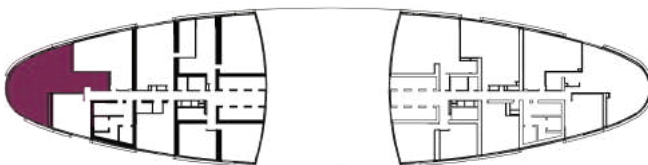
JUMEIRAH RESORT + SPA



3 BEDROOM

UNIT TYPE : S3A  
LEVELS: 18 to 41  
LEVELS: 43 to 72

SERVICED APARTMENTS



#### SELLABLE AREA

	sq. m	sq. ft
Suite Area	162 - 163	1746 - 1757
Balcony Area	14	151 - 152
Total Area	176 - 177	1898 - 1908

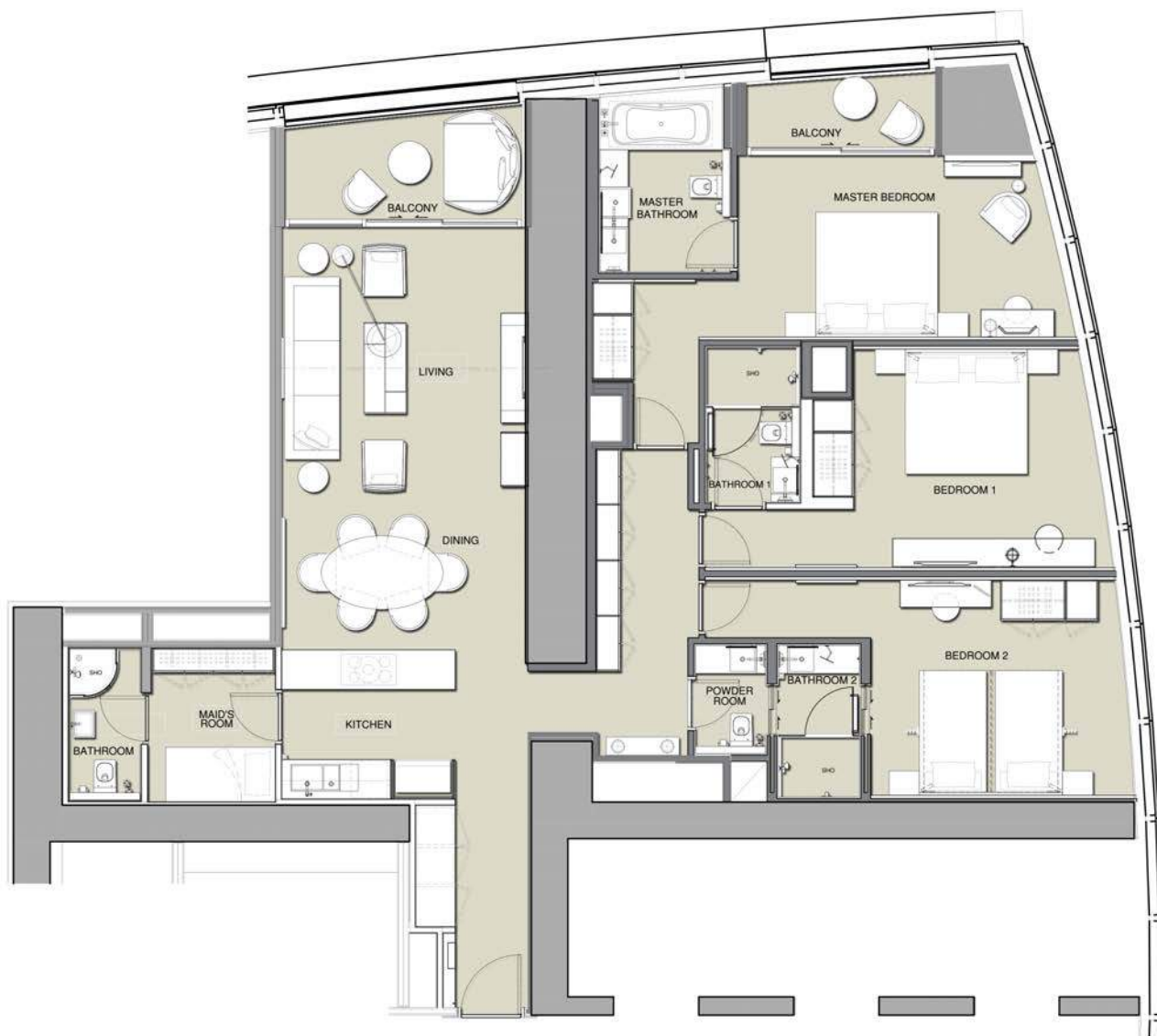
Disclaimer: 1. All materials, dimensions & drawings are approximate. 2. Information is subject to change without notice. 3. Actual suite area may vary from the stated area. 4. Drawings not to scale. 5. The developer reserves the right to make revisions/alterations without any liability whatsoever.



# THE ADDRESS

RESIDENCES

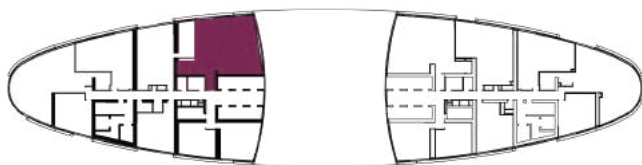
JUMEIRAH RESORT + SPA



3 BEDROOM

UNIT TYPE : S3B  
LEVELS: 18 to 41  
LEVELS: 43 to 62

SERVICED APARTMENTS



#### SELLABLE AREA

	sq. m	sq. ft
Suite Area	166 - 167	1791 - 1796
Balcony Area	16 - 17	175 - 178
Total Area	183	1966 - 1973

Disclaimer: 1. All materials, dimensions & drawings are approximate. 2. Information is subject to change without notice. 3. Actual suite area may vary from the stated area. 4. Drawings not to scale. 5. The developer reserves the right to make revisions/alterations without any liability whatsoever.



# THE ADDRESS

RESIDENCES

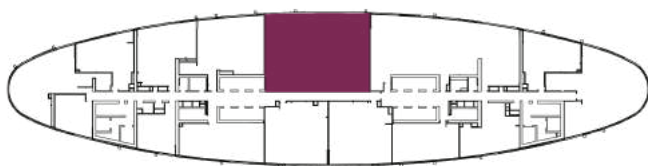
JUMEIRAH RESORT + SPA



4 BEDROOM

UNIT TYPE : S4B  
LEVELS: 64 to 67

SERVICED APARTMENTS



#### SELLABLE AREA

	sq. m	sq. ft
Suite Area	256	2751
Balcony Area	83	890
Total Area	338	3641



# THE ADDRESS

RESIDENCES

JUMEIRAH RESORT + SPA



4 BEDROOM

UNIT TYPE : S4C  
LEVELS: 68 to 72

SERVICED APARTMENTS



#### SELLABLE AREA

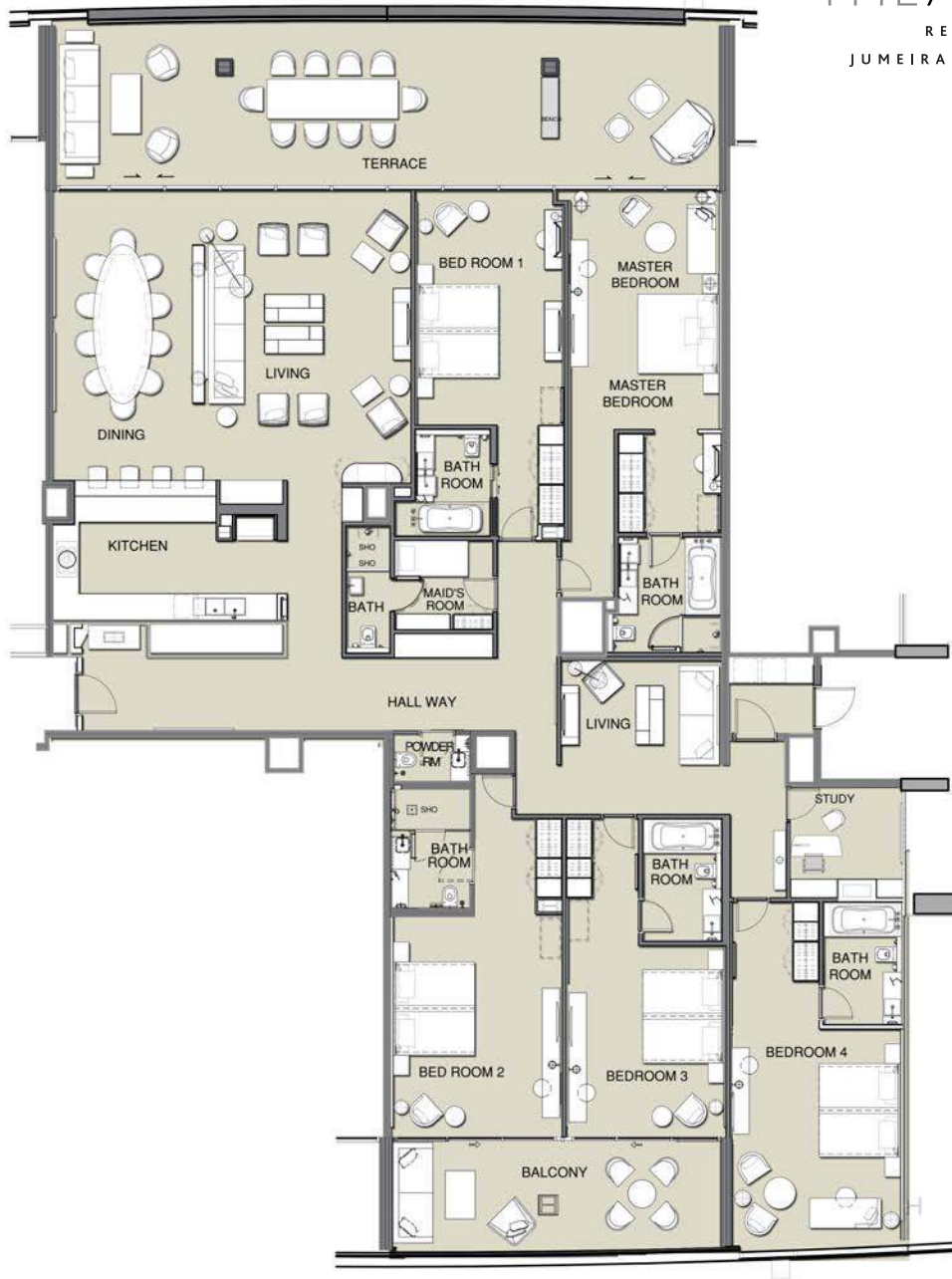
	sq. m	sq. ft
Suite Area	259	2788
Balcony Area	32	340
Total Area	291	3128





# THE ADDRESS

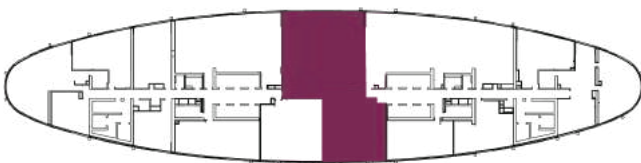
RESIDENCES  
JUMEIRAH RESORT + SPA



5 BEDROOM

UNIT TYPE : S5B  
LEVELS: 68 to 72

SERVICED APARTMENTS



#### SELLABLE AREA

	sq. m	sq. ft
Suite Area	367	3954
Balcony Area	99	1064
Total Area	466	5018

Disclaimer: 1. All materials, dimensions & drawings are approximate. 2. Information is subject to change without notice. 3. Actual suite area may vary from the stated area. 4. Drawings not to scale. 5. The developer reserves the right to make revisions/alterations without any liability whatsoever.



# THE ADDRESS

RESIDENCES

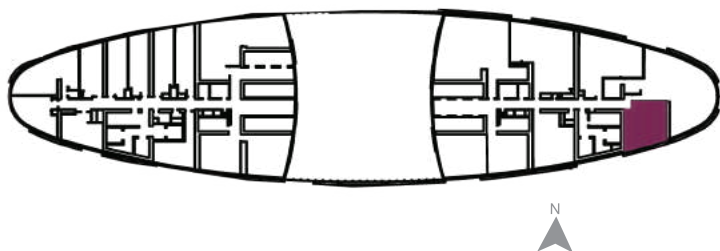
JUMEIRAH RESORT + SPA



1 BEDROOM

UNIT TYPE: R1A  
LEVELS: 3 to 16  
LEVELS: 18 to 41

RESIDENTIAL APARTMENTS



#### SELLABLE AREA

	sq.m	sq.ft
Suite Area	57	615 - 616
Balcony Area	8	89
Total Area	65 - 66	704 - 706

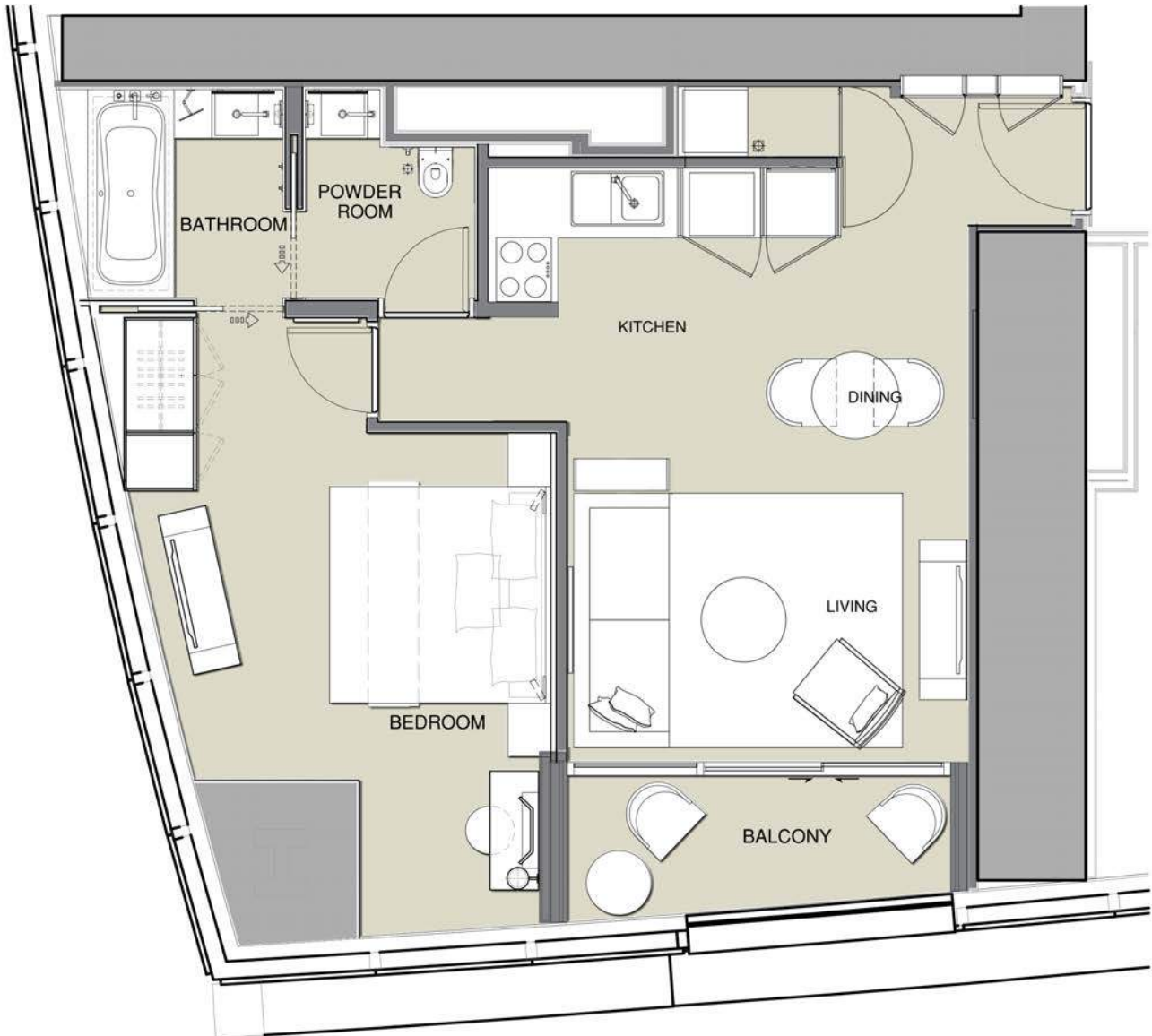
**Disclaimer:** 1. All materials, dimensions & drawings are approximate. 2. Information is subject to change without notice. 3. Actual suite area may vary from the stated area. 4. Drawings not to scale. 5. The developer reserves the right to make revisions/alterations without any liability whatsoever.



# THE ADDRESS

RESIDENCES

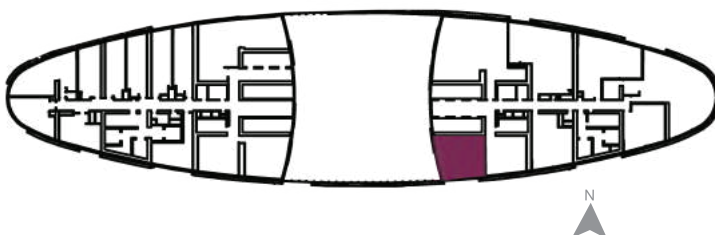
JUMEIRAH RESORT + SPA



1 BEDROOM

UNIT TYPE : R1D  
LEVELS: 13 to 16  
LEVELS: 18 to 41

RESIDENTIAL APARTMENTS



#### SELLABLE AREA

	sq.m	sq.ft
Suite Area	62 - 65	672 - 695
Balcony Area	6	68
Total Area	69 - 71	740 - 763

**Disclaimer:** 1. All materials, dimensions & drawings are approximate. 2. Information is subject to change without notice. 3. Actual suite area may vary from the stated area. 4. Drawings not to scale. 5. The developer reserves the right to make revisions/alterations without any liability whatsoever.



# THE ADDRESS

RESIDENCES

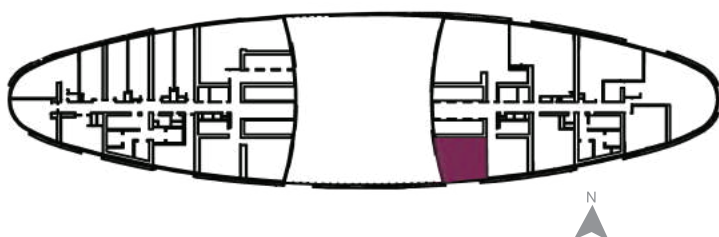
JUMEIRAH RESORT + SPA



**1 BEDROOM**

UNIT TYPE : R1D  
LEVELS: 3 to 8  
LEVELS: 11 to 12

RESIDENTIAL APARTMENTS



#### SELLABLE AREA

	sq.m	sq.ft
Suite Area	62 - 65	672 - 695
Balcony Area	6	68
Total Area	69 - 71	740 - 763

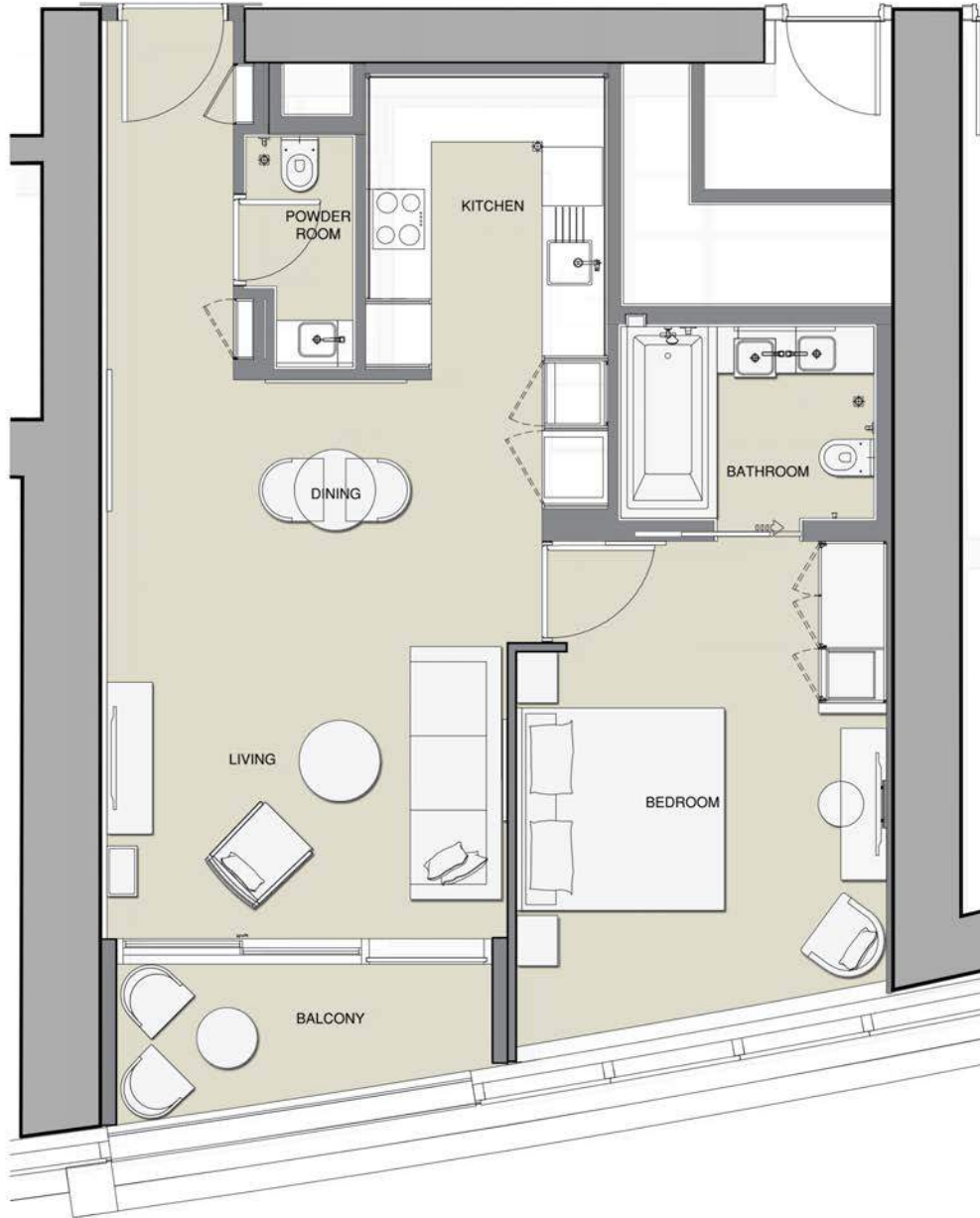
**Disclaimer:** 1. All materials, dimensions & drawings are approximate. 2. Information is subject to change without notice. 3. Actual suite area may vary from the stated area. 4. Drawings not to scale. 5. The developer reserves the right to make revisions/alterations without any liability whatsoever.



# THE ADDRESS

RESIDENCES

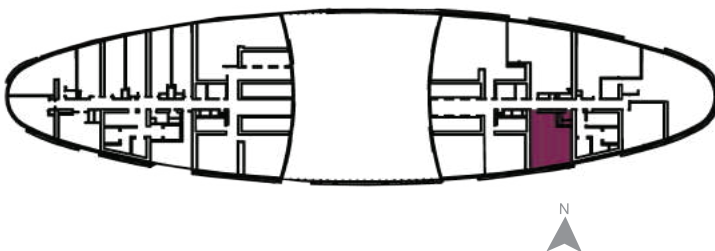
JUMEIRAH RESORT + SPA



1 BEDROOM

UNIT TYPE : R1B  
LEVELS: 3 to 16  
LEVELS: 18 to 41

RESIDENTIAL APARTMENTS



#### SELLABLE AREA

	sq.m	sq.ft
Suite Area	72	776 - 777
Balcony Area	8	81
Total Area	80	858

**Disclaimer:** 1. All materials, dimensions & drawings are approximate. 2. Information is subject to change without notice. 3. Actual suite area may vary from the stated area. 4. Drawings not to scale. 5. The developer reserves the right to make revisions/alterations without any liability whatsoever.



# THE ADDRESS

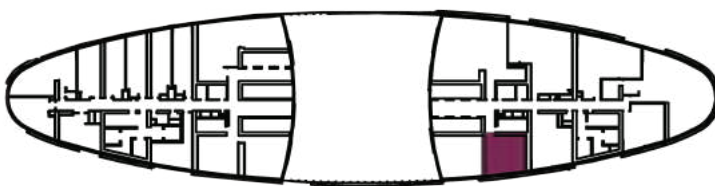
RESIDENCES  
JUMEIRAH RESORT + SPA



1 BEDROOM

UNIT TYPE : R1C  
LEVELS: 3 to 16  
LEVELS: 18 to 41

RESIDENTIAL APARTMENTS



#### SELLABLE AREA

	sq.m	sq.ft
Suite Area	59	638
Total Area	59	638

**Disclaimer:** 1. All materials, dimensions & drawings are approximate. 2. Information is subject to change without notice. 3. Actual suite area may vary from the stated area. 4. Drawings not to scale. 5. The developer reserves the right to make revisions/alterations without any liability whatsoever.



# THE ADDRESS

RESIDENCES

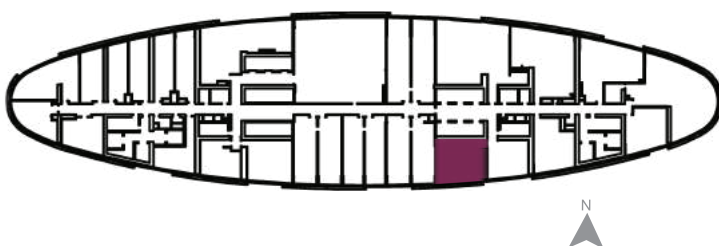
JUMEIRAH RESORT + SPA



1 BEDROOM

UNIT TYPE : R1E  
LEVELS: 9 to 10

RESIDENTIAL APARTMENTS



#### SELLABLE AREA

	sq.m	sq.ft
Suite Area	69	738
Balcony Area	6	66
Total Area	75	804

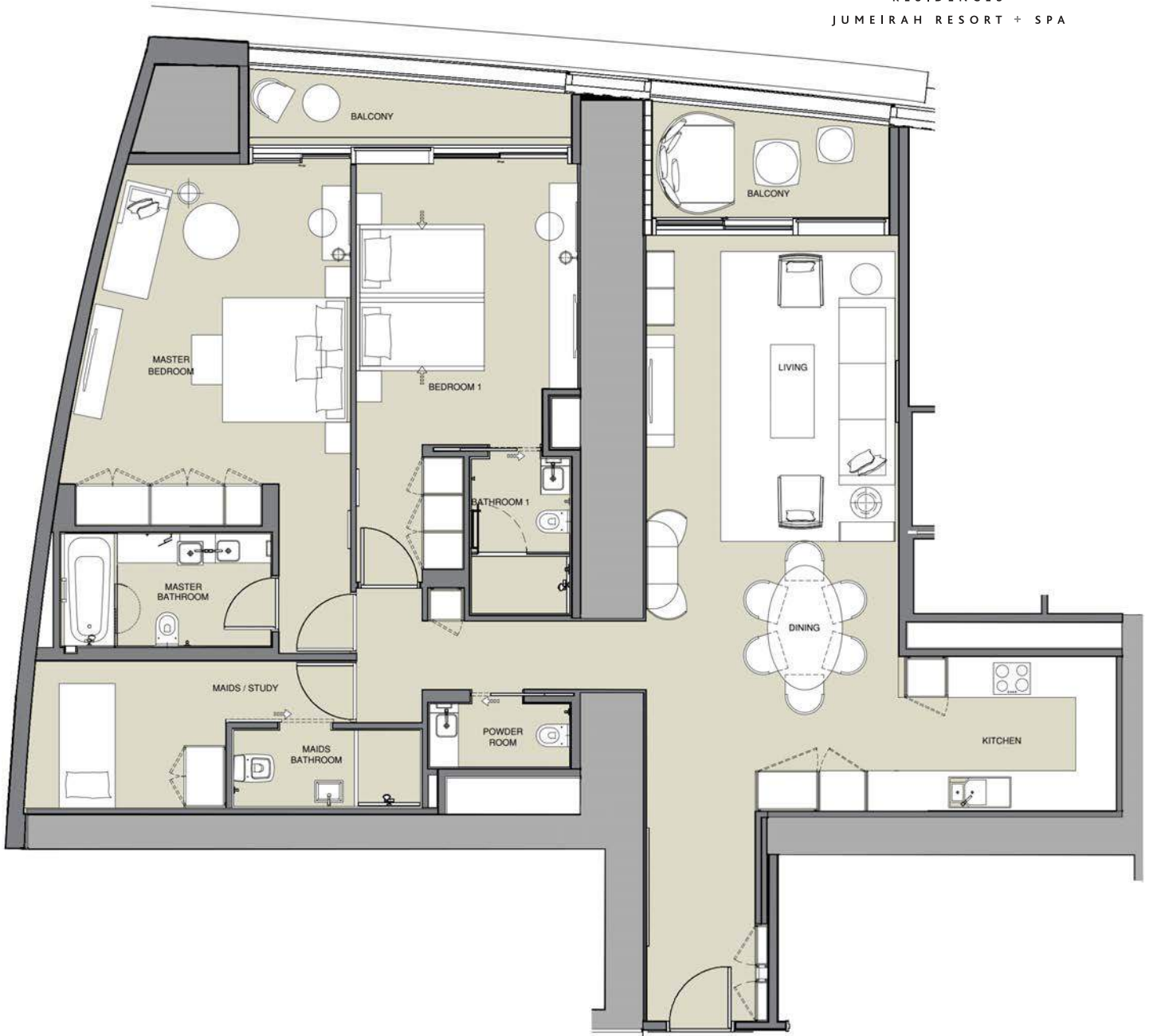
**Disclaimer:** 1. All materials, dimensions & drawings are approximate. 2. Information is subject to change without notice. 3. Actual suite area may vary from the stated area. 4. Drawings not to scale. 5. The developer reserves the right to make revisions/alterations without any liability whatsoever.



# THE ADDRESS

RESIDENCES

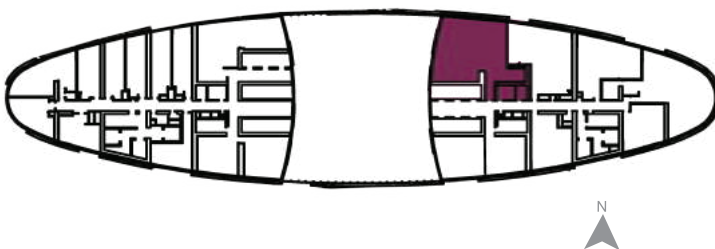
JUMEIRAH RESORT + SPA



2 BEDROOM

UNIT TYPE : R2A  
LEVELS: 3 to 8  
LEVELS: 11 to 12  
LEVELS: 63

RESIDENTIAL APARTMENTS



#### SELLABLE AREA

	sq.m	sq.ft
Suite Area	160 - 163	1723 - 1759
Balcony Area	19 - 21	210 - 221
Total Area	180 - 184	1933 - 1981

**Disclaimer:** 1. All materials, dimensions & drawings are approximate. 2. Information is subject to change without notice. 3. Actual suite area may vary from the stated area. 4. Drawings not to scale. 5. The developer reserves the right to make revisions/alterations without any liability whatsoever.

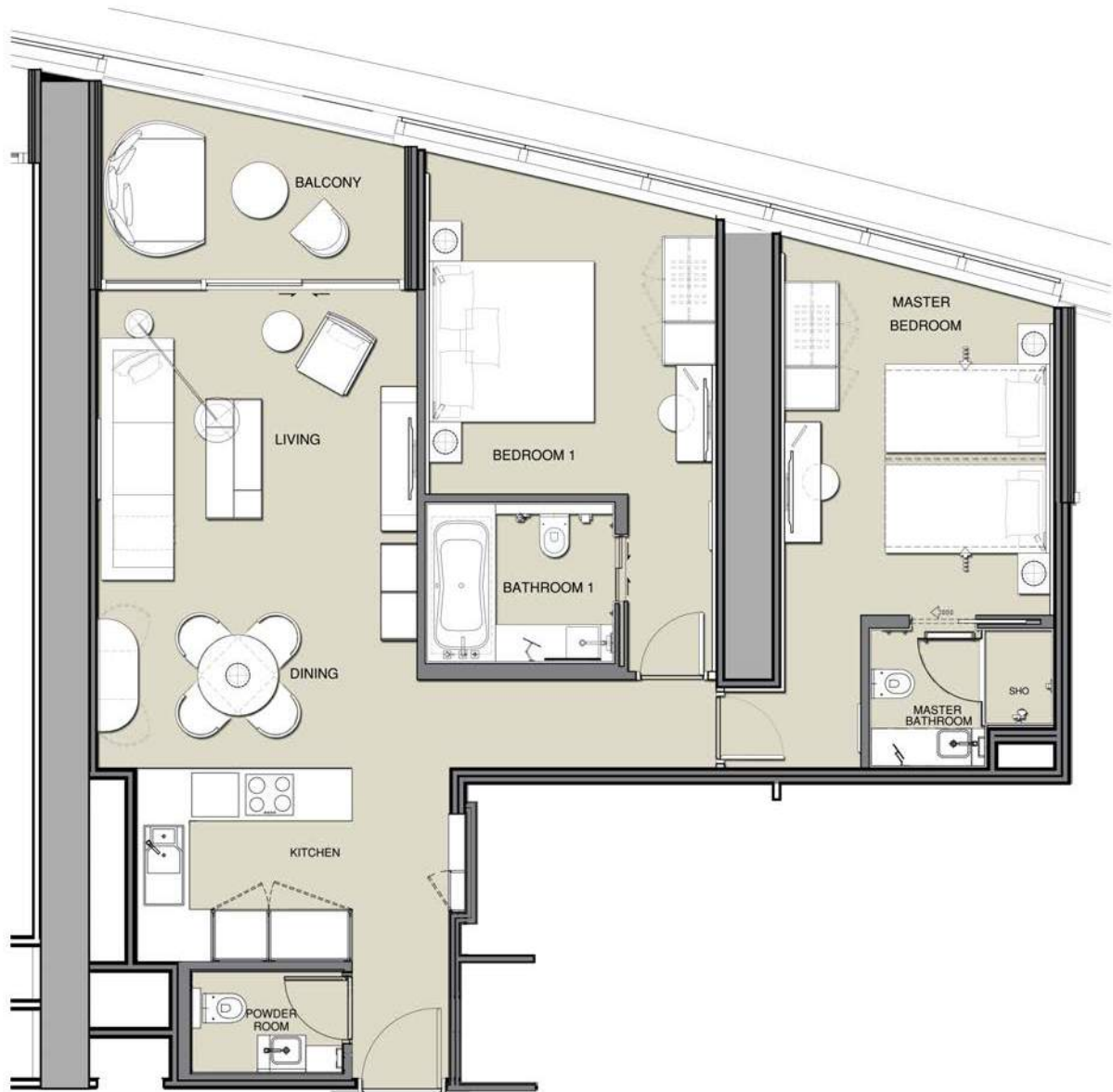




# THE ADDRESS

RESIDENCES

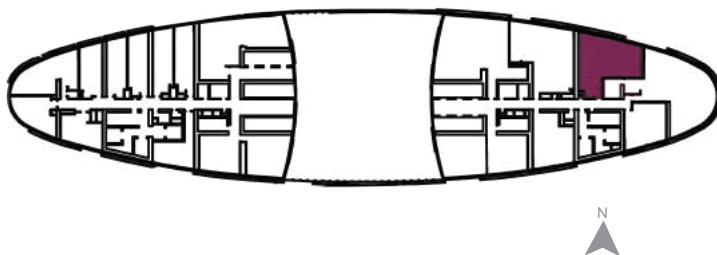
JUMEIRAH RESORT + SPA



2 BEDROOM

UNIT TYPE : R2C  
LEVELS: 3 to 16  
LEVELS: 18 to 41  
LEVELS: 43 to 72

RESIDENTIAL APARTMENTS



#### SELLABLE AREA

	sq.m	sq.ft
Suite Area	99 - 100	1066 - 1072
Balcony Area	10	106 - 109
Total Area	109 - 110	1171 - 1181

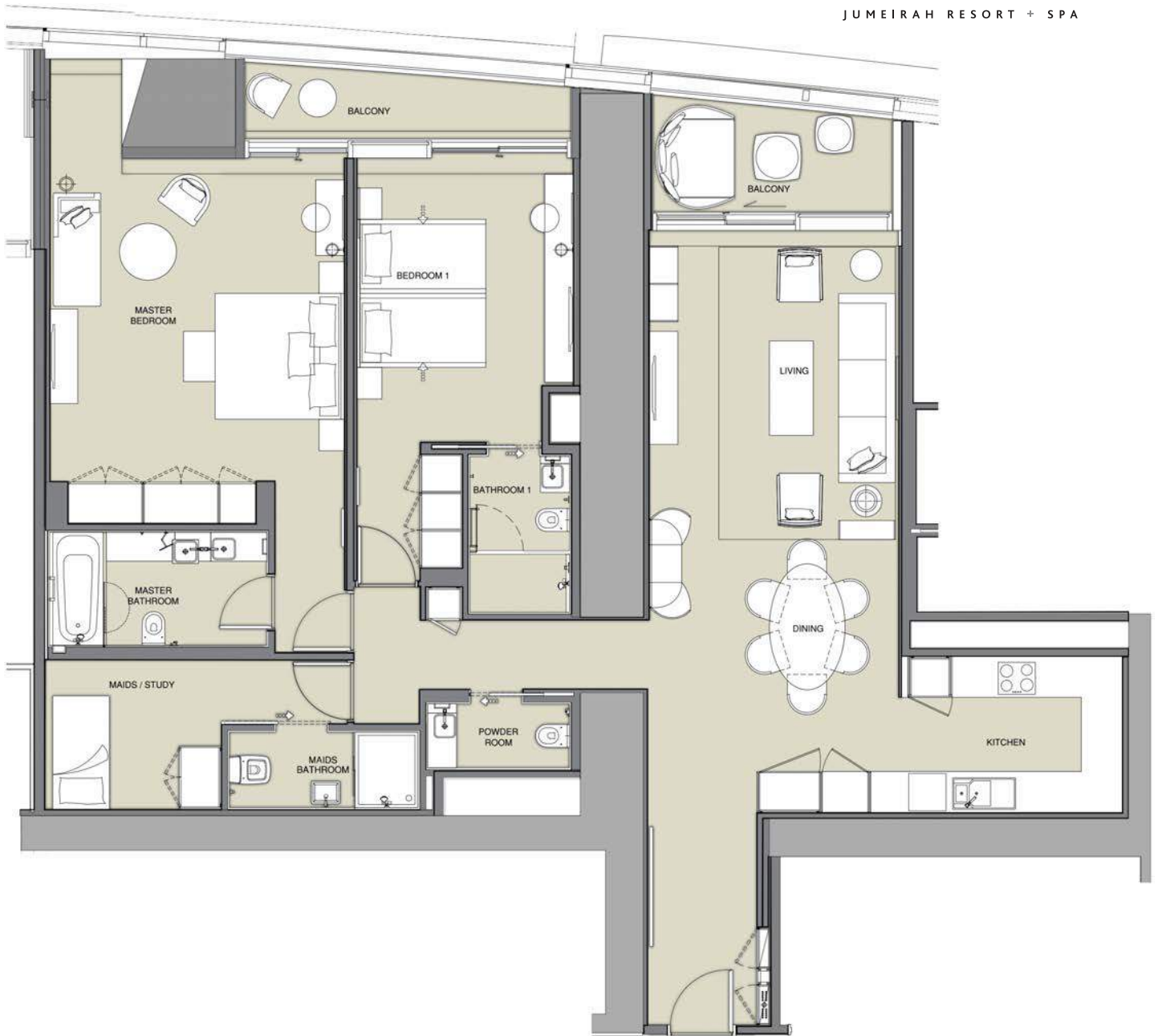
**Disclaimer:** 1. All materials, dimensions & drawings are approximate. 2. Information is subject to change without notice. 3. Actual suite area may vary from the stated area. 4. Drawings not to scale. 5. The developer reserves the right to make revisions/alterations without any liability whatsoever.



# THE ADDRESS

RESIDENCES

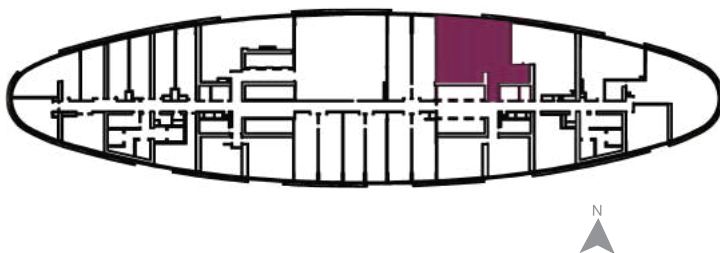
JUMEIRAH RESORT + SPA



2 BEDROOM

UNIT TYPE : R2D  
LEVELS: 9 to 10

RESIDENTIAL APARTMENTS



#### SELLABLE AREA

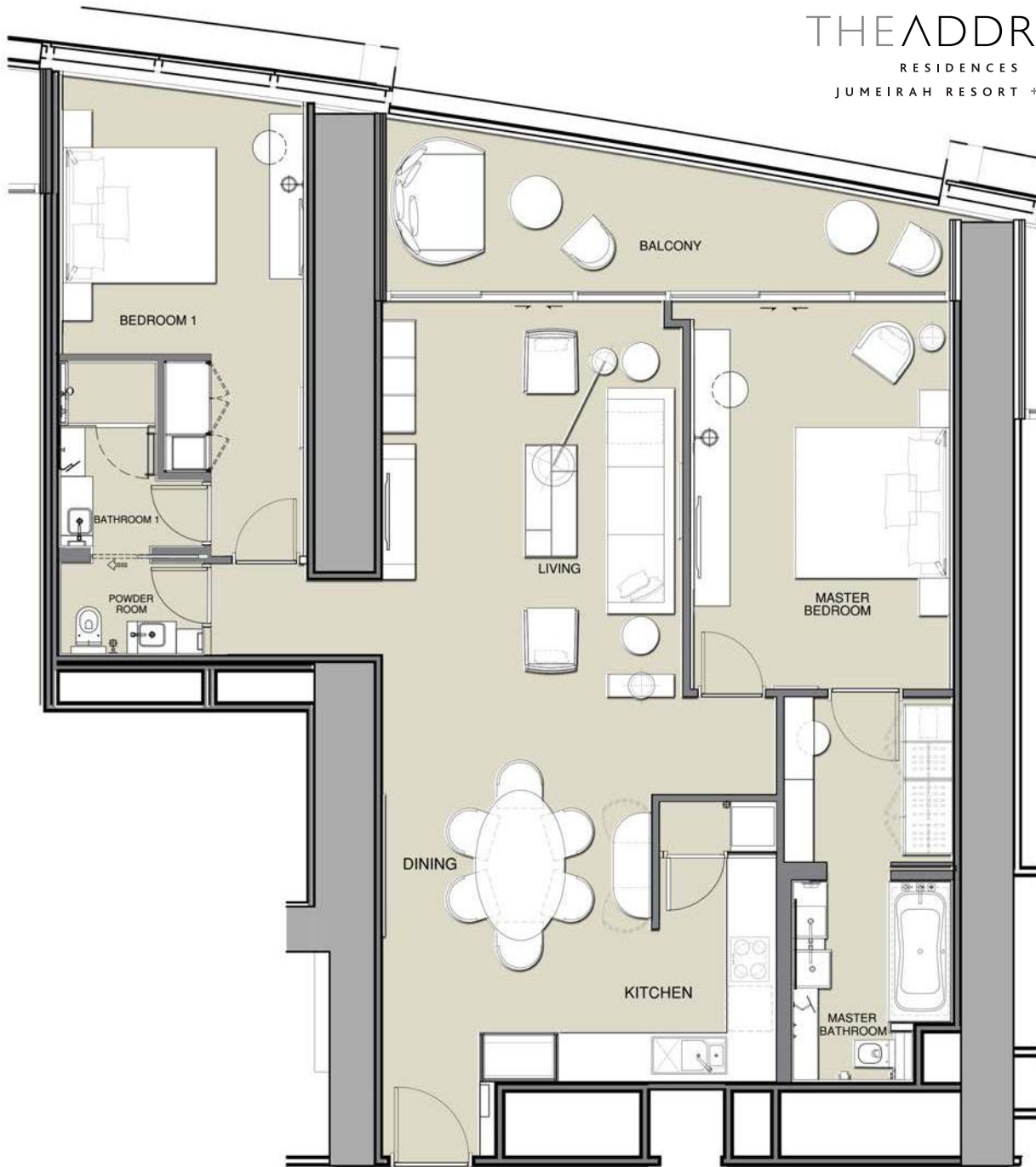
	sq.m	sq.ft
Suite Area	162	1746
Balcony Area	23	243
Total Area	185	1989

**Disclaimer:** 1. All materials, dimensions & drawings are approximate. 2. Information is subject to change without notice. 3. Actual suite area may vary from the stated area. 4. Drawings not to scale. 5. The developer reserves the right to make revisions/alterations without any liability whatsoever.



# THE ADDRESS

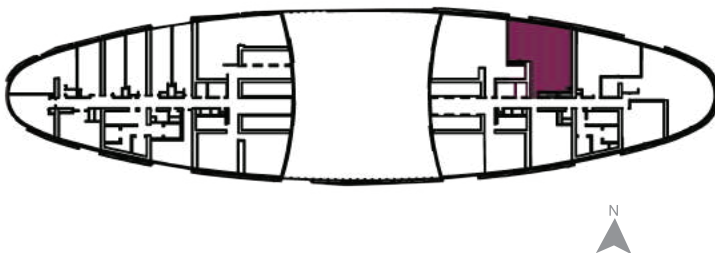
RESIDENCES  
JUMEIRAH RESORT + SPA



**2 BEDROOM**

UNIT TYPE : R2E  
LEVELS: 3 to 16  
LEVELS: 18 to 41  
LEVELS: 43 to 67

RESIDENTIAL APARTMENTS



### SELLABLE AREA

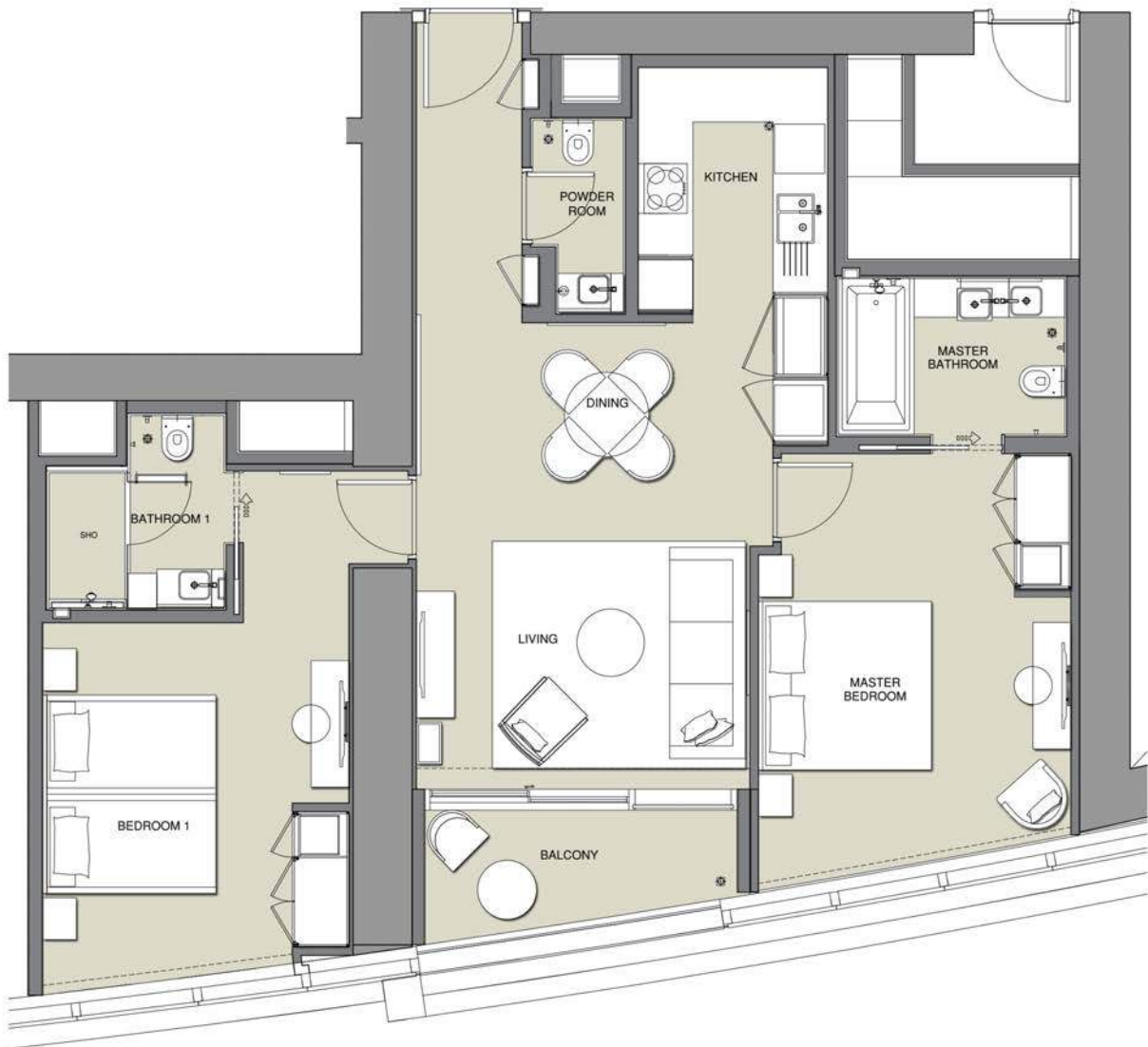
	sq.m	sq.ft
Suite Area	123 - 124	1320 - 1330
Balcony Area	16	176 - 177
Total Area	139 - 140	1497 - 1505

**Disclaimer:** 1. All materials, dimensions & drawings are approximate. 2. Information is subject to change without notice. 3. Actual suite area may vary from the stated area. 4. Drawings not to scale. 5. The developer reserves the right to make revisions/alterations without any liability whatsoever.



# THE ADDRESS

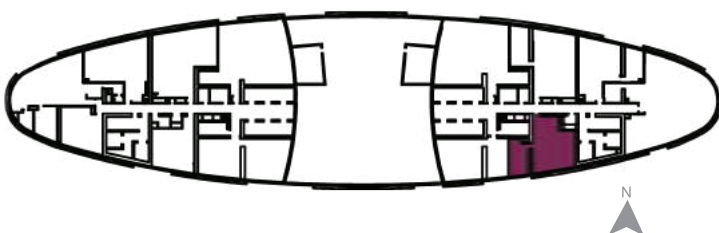
RESIDENCES  
JUMEIRAH RESORT + SPA



2 BEDROOM

UNIT TYPE : R2F  
LEVELS: 43 to 72

RESIDENTIAL APARTMENTS



#### SELLABLE AREA

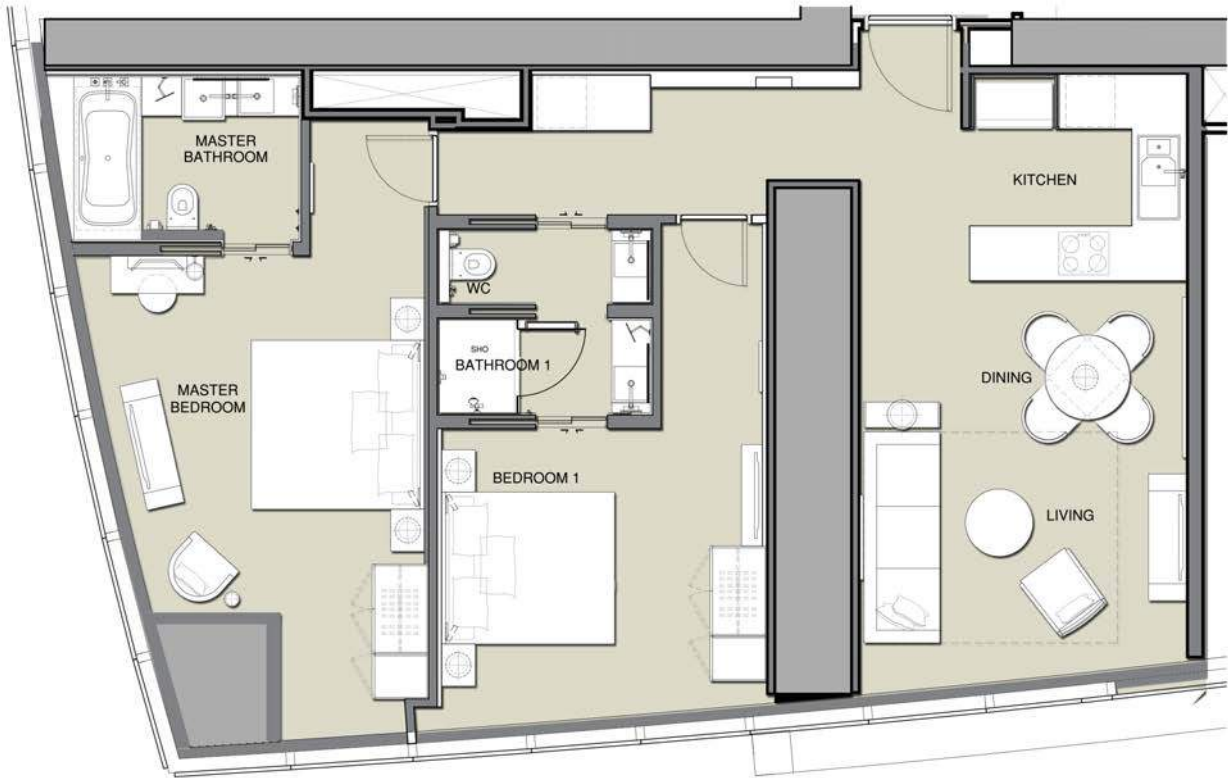
	sq.m	sq.ft
Suite Area	100 - 101	1081 - 1090
Balcony Area	7	79
Total Area	108 - 109	1160 - 1169

**Disclaimer:** 1. All materials, dimensions & drawings are approximate. 2. Information is subject to change without notice. 3. Actual suite area may vary from the stated area. 4. Drawings not to scale. 5. The developer reserves the right to make revisions/alterations without any liability whatsoever.



# THE ADDRESS

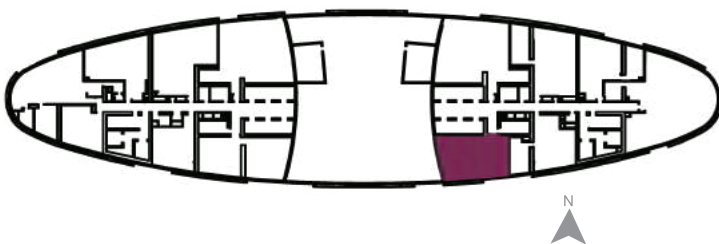
RESIDENCES  
JUMEIRAH RESORT + SPA



2 BEDROOM

UNIT TYPE : R2G  
LEVELS: 43 to 62

RESIDENTIAL APARTMENTS



#### SELLABLE AREA

	sq.m	sq.ft
Suite Area	107 - 108	1152 - 1159
Total Area	107 - 108	1152 - 1159

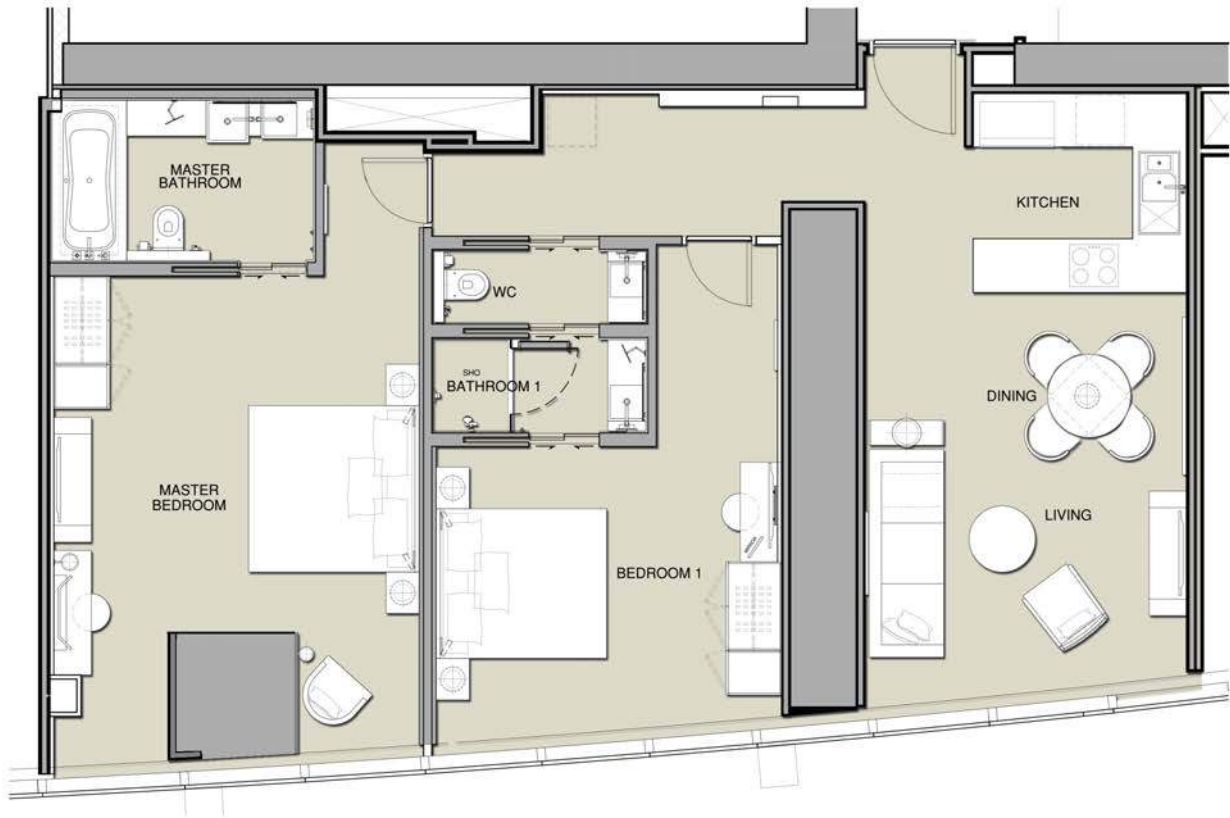
**Disclaimer:** 1. All materials, dimensions & drawings are approximate. 2. Information is subject to change without notice. 3. Actual suite area may vary from the stated area. 4. Drawings not to scale. 5. The developer reserves the right to make revisions/alterations without any liability whatsoever.



# THE ADDRESS

RESIDENCES

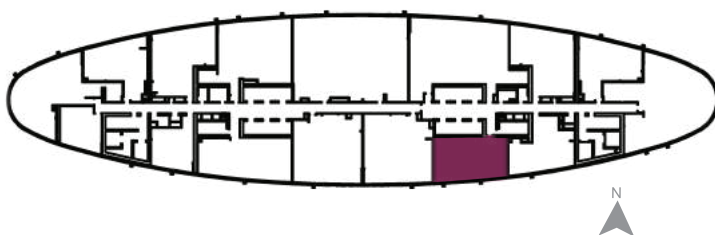
JUMEIRAH RESORT + SPA



2 BEDROOM

UNIT TYPE : R2H  
LEVELS: 64 to 72

RESIDENTIAL APARTMENTS



#### SELLABLE AREA

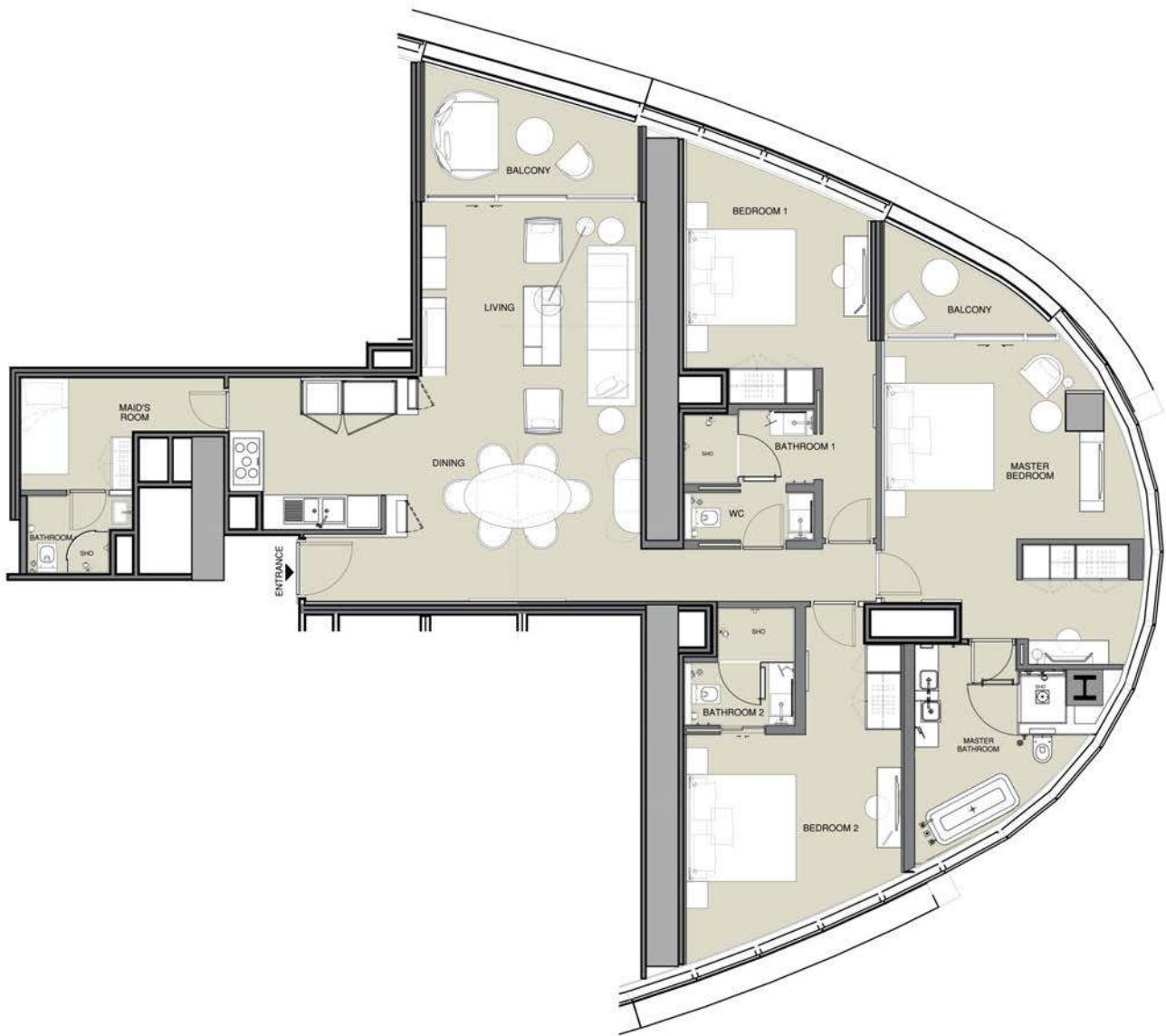
	sq.m	sq.ft
Suite Area	113	1218
Total Area	113	1218

**Disclaimer:** 1. All materials, dimensions & drawings are approximate. 2. Information is subject to change without notice. 3. Actual suite area may vary from the stated area. 4. Drawings not to scale. 5. The developer reserves the right to make revisions/alterations without any liability whatsoever.



# THE ADDRESS

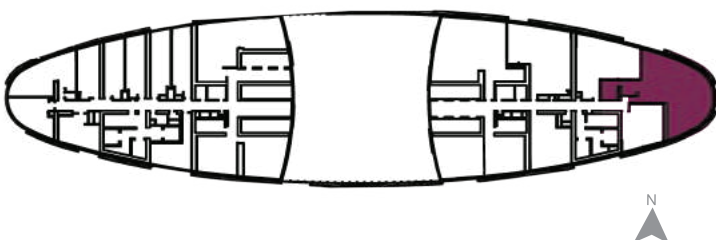
RESIDENCES  
JUMEIRAH RESORT + SPA



3 BEDROOM

UNIT TYPE : R3A  
LEVELS: 3 to 16  
LEVELS: 18 to 41

RESIDENTIAL APARTMENTS



#### SELLABLE AREA

	sq.m	sq.ft
Suite Area	162	1746
Balcony Area	14	151 -152
Total Area	176	1897 - 1899

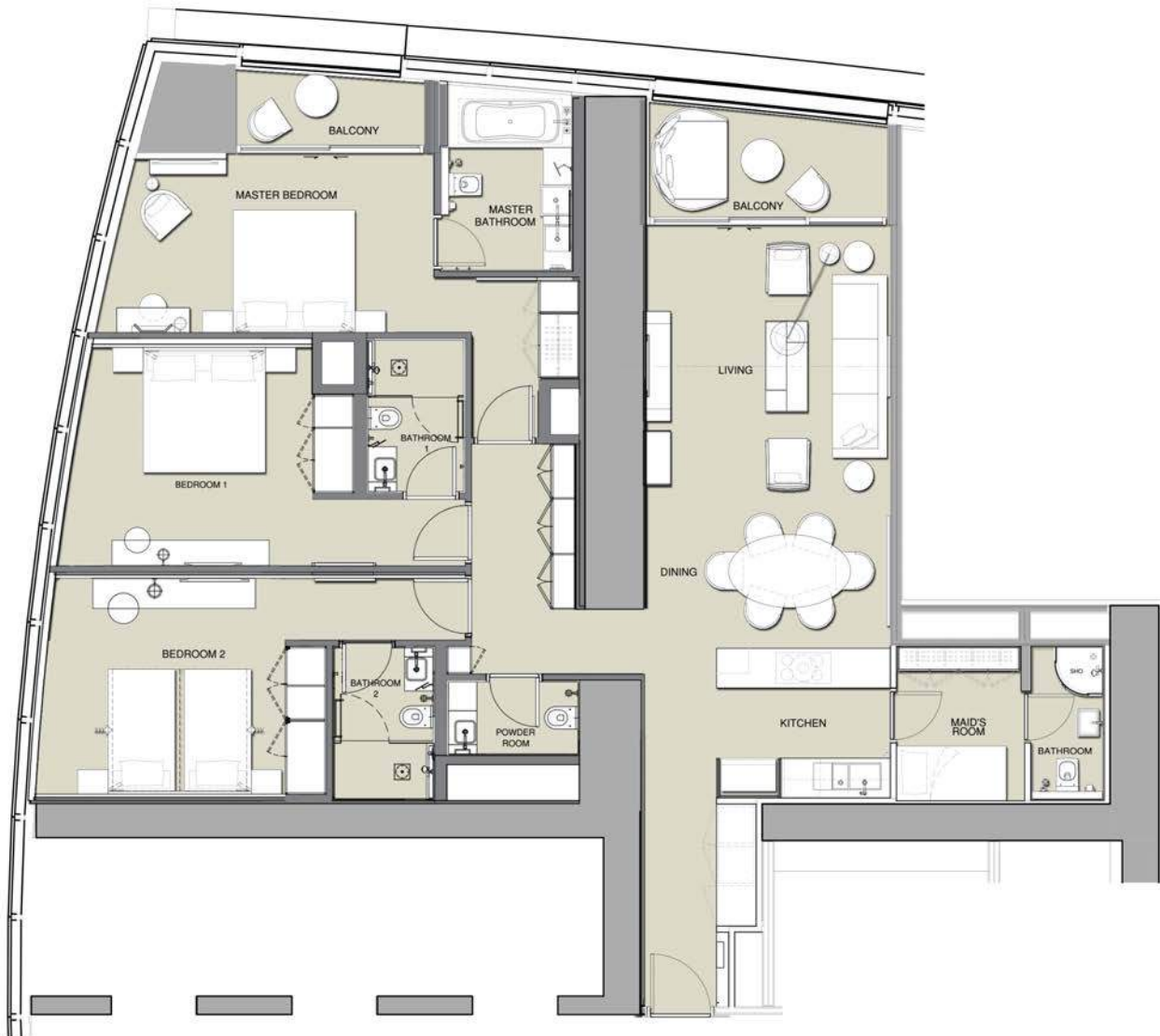
**Disclaimer:** 1. All materials, dimensions & drawings are approximate. 2. Information is subject to change without notice. 3. Actual suite area may vary from the stated area. 4. Drawings not to scale. 5. The developer reserves the right to make revisions/alterations without any liability whatsoever.



# THE ADDRESS

RESIDENCES

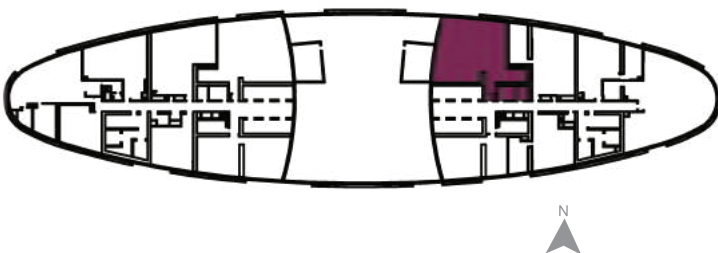
JUMEIRAH RESORT + SPA



3 BEDROOM

UNIT TYPE : R3B  
LEVELS: 13 to 16  
LEVELS: 18 to 41  
LEVELS: 43 to 62

RESIDENTIAL APARTMENTS



#### SELLABLE AREA

	sq.m	sq.ft
Suite Area	166 - 167	1782 - 1793
Balcony Area	16 - 17	174 - 180
Total Area	182 - 183	1962 - 1968

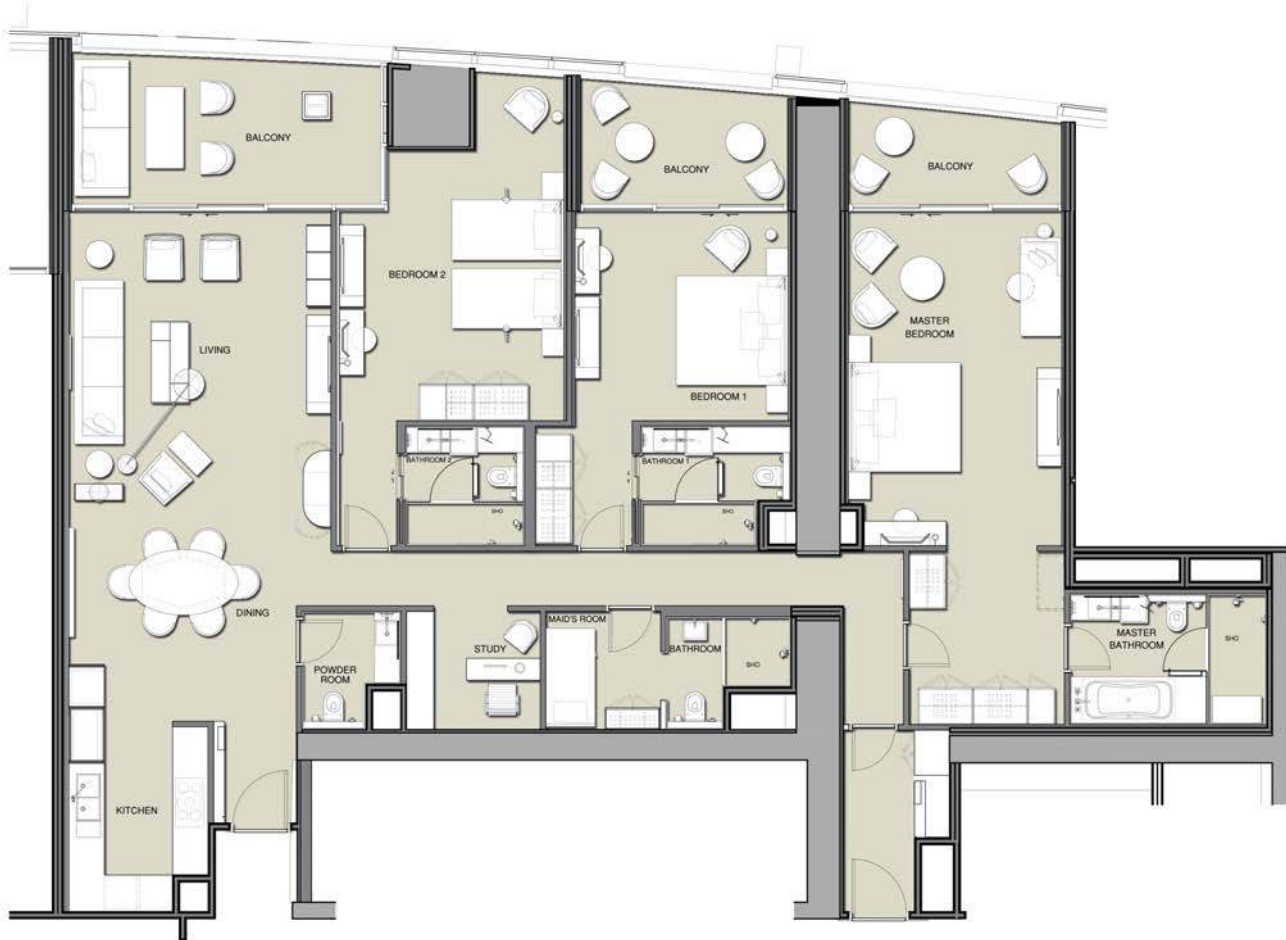
**Disclaimer:** 1. All materials, dimensions & drawings are approximate. 2. Information is subject to change without notice. 3. Actual suite area may vary from the stated area. 4. Drawings not to scale. 5. The developer reserves the right to make revisions/alterations without any liability whatsoever.





# THE ADDRESS

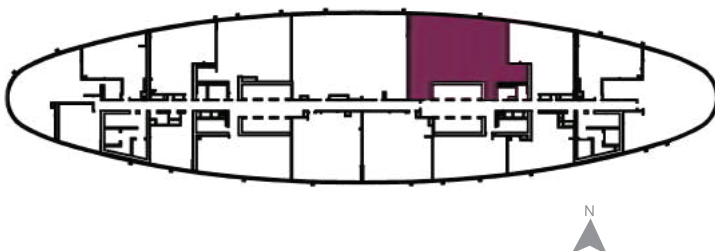
RESIDENCES  
JUMEIRAH RESORT + SPA



3 BEDROOM

UNIT TYPE : R3C  
LEVELS: 64 to 67

RESIDENTIAL APARTMENTS



#### SELLABLE AREA

	sq.m	sq.ft
Suite Area	218	2351
Balcony Area	37	401
Total Area	256	2752

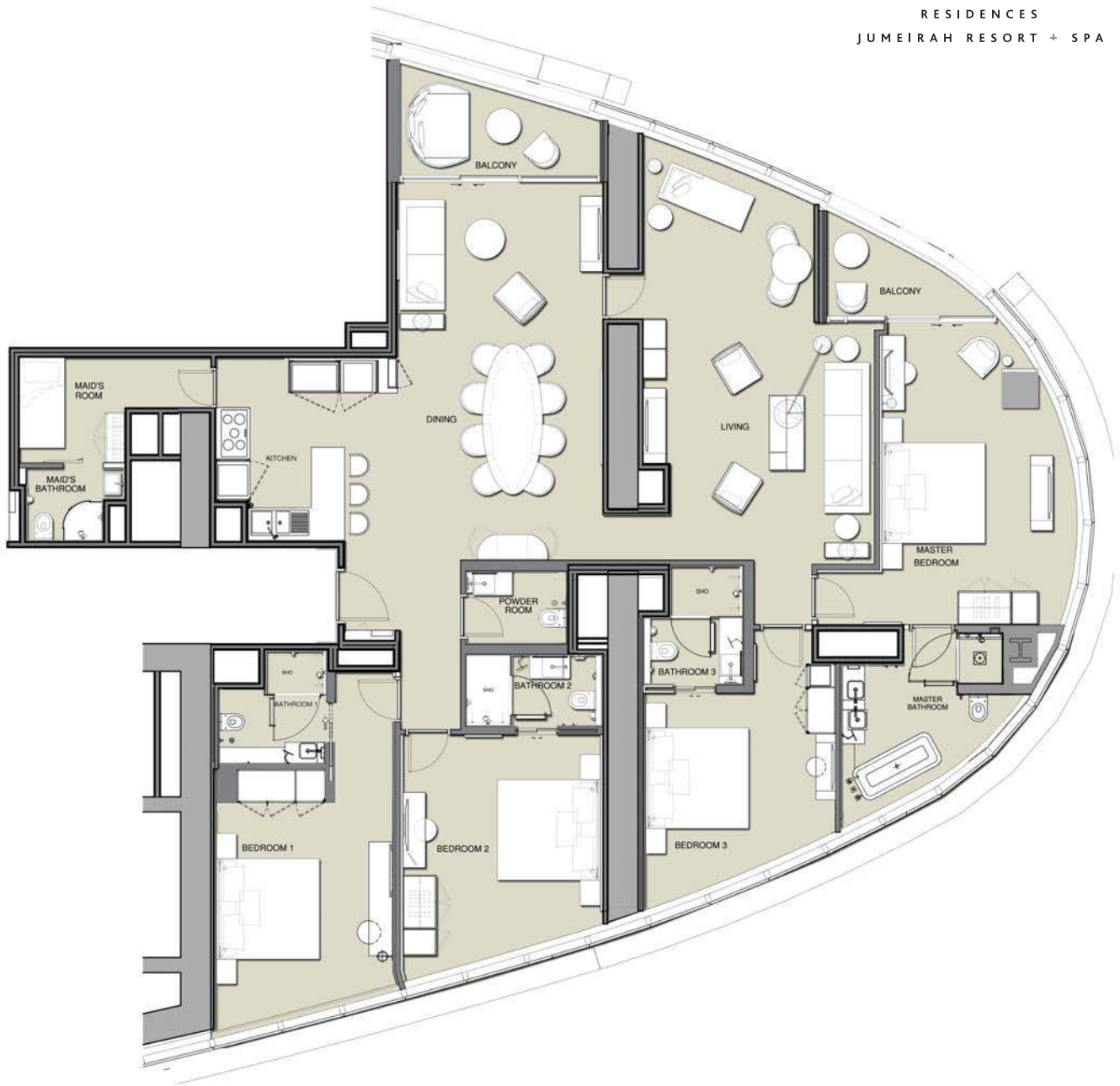
**Disclaimer:** 1. All materials, dimensions & drawings are approximate. 2. Information is subject to change without notice. 3. Actual suite area may vary from the stated area. 4. Drawings not to scale. 5. The developer reserves the right to make revisions/alterations without any liability whatsoever.



# THE ADDRESS

RESIDENCES

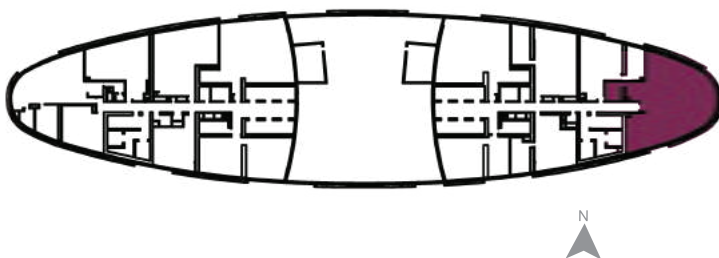
JUMEIRAH RESORT + SPA



4 BEDROOM

UNIT TYPE : R4A  
LEVELS: 43 to 72

RESIDENTIAL APARTMENTS



#### SELLABLE AREA

	sq.m	sq.ft
Suite Area	227	2441 - 2442
Balcony Area	14	147 - 148
Total Area	240 - 241	2588 - 2590

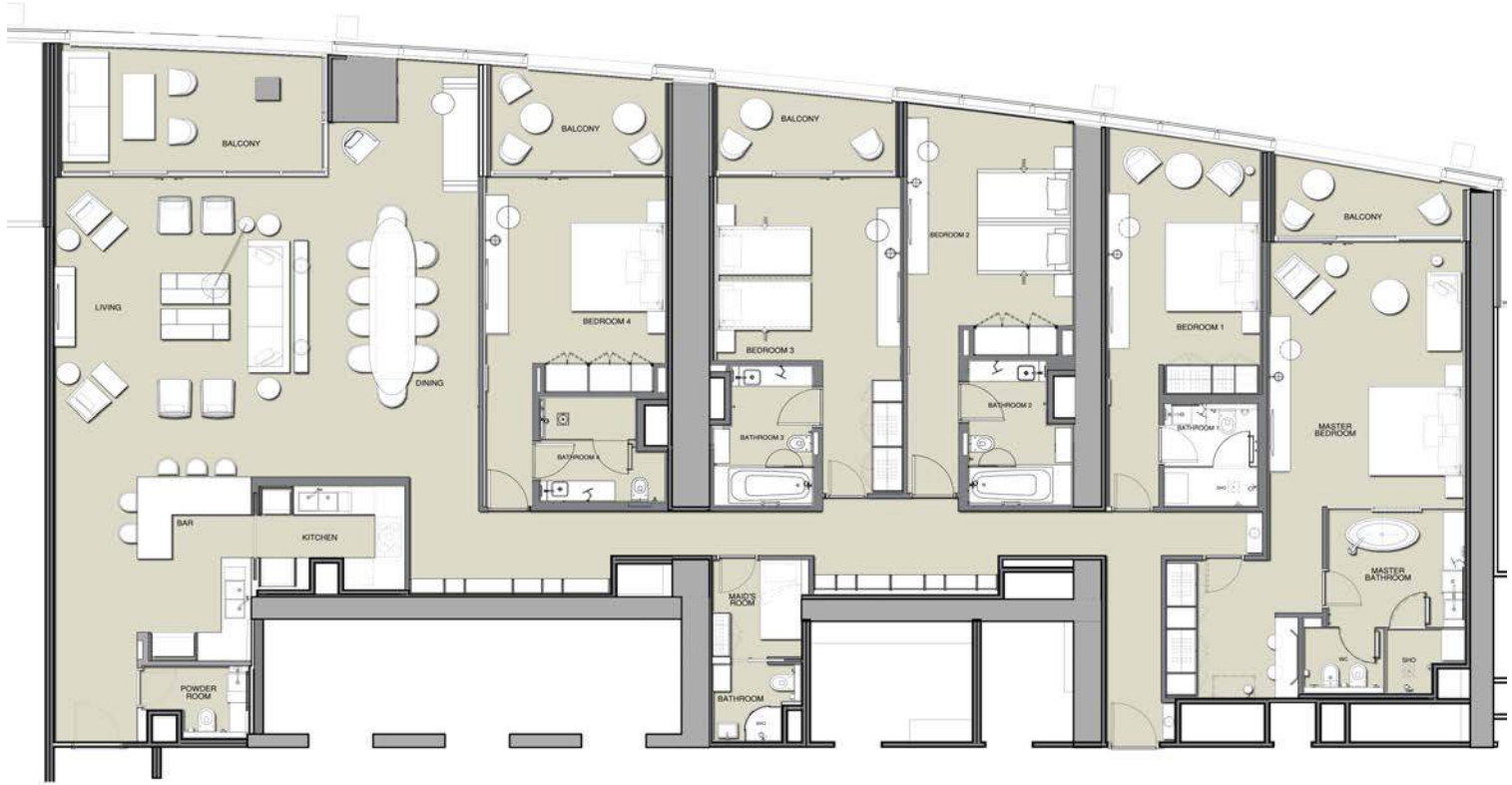
**Disclaimer:** 1. All materials, dimensions & drawings are approximate. 2. Information is subject to change without notice. 3. Actual suite area may vary from the stated area. 4. Drawings not to scale. 5. The developer reserves the right to make revisions/alterations without any liability whatsoever.



# THE ADDRESS

RESIDENCES

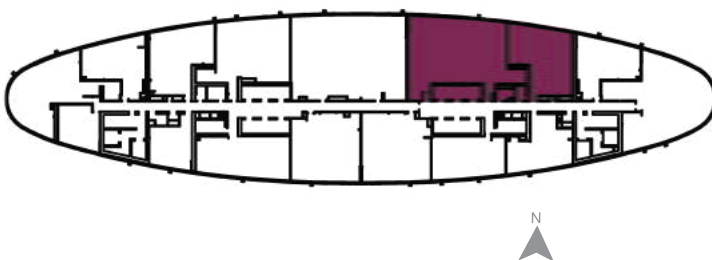
JUMEIRAH RESORT + SPA



5 BEDROOM

UNIT TYPE : R5A  
LEVELS: 68 to 72

RESIDENTIAL APARTMENTS



#### SELLABLE AREA

	sq.m	sq.ft
Suite Area	354	3810
Balcony Area	45	489
Total Area	399	4300

**Disclaimer:** 1. All materials, dimensions & drawings are approximate. 2. Information is subject to change without notice. 3. Actual suite area may vary from the stated area. 4. Drawings not to scale. 5. The developer reserves the right to make revisions/alterations without any liability whatsoever.